

1		2		3		4		5		6	
ASSEMBLY CAT. No.		ENTRY THREAD	COMPONENT PART NUMBER						MIN THREAD LENGTH	CABLE ACCEPTANCE	TORQUE ON BACKNUT (Nm)
STANDARD	EXTENDED TAIL		GLAND BODY	SEALING WASHER	GROMMET	FRICTION WASHER	BACK NUT	EXTENDED TAIL BACKNUT			
GWPM0H	GWPMEX0H	M20 X 1.5 - 6g	GWPM0-1H	W20H	GWPM0-2H	GWPM0-3H	GWPM0-4	GWPEX0-4	13.0 MIN.	3.0 - 7.1	25
GWPM1H	GWPMEX1H	M20 X 1.5 - 6g	GWPM1-1H	W20H	GWPM1-2H	GWPM1-3H	GWPM1-4	GWPEX1-4	13.0 MIN.	6.5 - 9.5	25
GWPM1AH	GWPMEX1AH	M20 X 1.5 - 6g	GWPM1A-1H	W20H	GWPM1A-2H	GWPM1A-3H	GWPM1A-4	GWPEX1A-4	13.0 MIN.	9.0 - 11.9	25
*GWPM1BSSH	*GWPMEX1BSSH	M20 X 1.5 - 6g	*GWPM1B-1HSS	W20H	GWPM1B-2H	GWPM1B-3H	GWPM1B-4SS	GWPEX1B-4SS	13.0 MIN.	11.5 - 14.3	40
GWPM1B-25H	GWPMEX1B-25H	M25 X 1.5 - 6g	GWPM1B-25-1H	W25H	GWPM1B-2H	GWPM1B-3H	GWPM1B-4	GWPEX1B-4	13.0 MIN.	11.5 - 14.3	40
GWPM2H	GWPMEX2H	M25 X 1.5 - 6g	GWPM2-1H	W25H	GWPM2-2H	GWPM2-3H	GWPM2-4	GWPEX2-4	13.0 MIN.	13.5 - 17.5	45
*GWPM2ASSH	*GWPMEX2ASSH	M25 X 1.5 - 6g	*GWPM2A-1HSS	W25H	GWPM2A-2H	GWPM2A-3H	GWPM2A-4SS	GWPEX2A-4SS	13.0 MIN.	17.0 - 20.1	40
GWPM2A-32H	GWPMEX2A-32H	M32 X 1.5 - 6g	GWPM2A-32-1H	W32H	GWPM2A-2H	GWPM2A-3H	GWPM2A-4	GWPEX2A-4	13.0 MIN.	17.0 - 20.1	40
GWPM3H	GWPMEX3H	M32 X 1.5 - 6g	GWPM3-1H	W32H	GWPM3-2H	GWPM3-3H	GWPM3-4	GWPEX3-4	20.0 MIN.	19.5 - 23.8	30
GWPM3AH	GWPMEX3AH	M32 X 1.5 - 6g	GWPM3A-1H	W32H	GWPM3A-2H	GWPM3A-3H	GWPM3A-4	GWPEX3A-4	20.0 MIN.	22.5 - 26.2	40
GWPM4H	GWPMEX4H	M40 X 1.5 - 6g	GWPM4-1H	W40H	GWPM4-2H	GWPM4-3H	GWPM4-4	GWPEX4-4	20.0 MIN.	26.0 - 29.4	60
GWPM4AH	GWPMEX4AH	M40 X 1.5 - 6g	GWPM4A-1H	W40H	GWPM4A-2H	GWPM4A-3H	GWPM4A-4	GWPEX4A-4	20.0 MIN.	28.5 - 32.5	90

SEALING WASHER

GLAND BODY

GROMMET

FRICTION WASHER

BACK NUT

BACK NUT EXTENDED TAIL

"ENTRY THREAD" (FLAMEPATH)

"THREAD LENGTH" (FLAMEPATH)

NOTES:

1. THE SPECIFICATIONS, DIMENSIONS AND RATINGS OF THE GLAND COMPLY WITH IEC 60079 EXPLOSIVE ATMOSPHERES.

2. ADD "SS" TO PART No. FOR STAINLESS STEEL VERSION. (e.g. GWPM2ASSH).

3. "*" INDICATES STAINLESS STEEL VERSION ONLY (NOT AVAILABLE IN NICKEL PLATED BRASS).

4. REFER TO SUREFIT GLAND CATALOGUE FOR FITTING INSTRUCTIONS.

5. IP66/68 RATING IS 7 METRES FOR 60 MINUTES.

6. SERVICE TEMPERATURE RANGE IS -20° TO +130°C.

7. MATERIALS:

BRASS COMPONENTS: FREE CUTTING BRASS C38500 GRADE TO BE NICKEL PLATED TO Cu/Ni 5b TO AS 1192-2004. MAX. PLATING THICKNESS 8um

STAINLESS COMPONENTS: STAINLESS STEEL GRADE 303/304 or BETTER

FRICTION & SEALING WASHERS: VIRGIN PTFE (TEFLON)

GROMMETS: SILICONE (WACKER ELASTOSIL 80/90 DURO - SHORE A)

MARKING DETAILS

CMI SUREFIT "ASSEMBLY CAT. No."

(e.g. CMI SUREFIT GWPM3AH OR CMI SUREFIT GWPMEX3AH)

IECEX ExTC 20.0005

Ex db I Mb Ex db IIC Gb Ex eb I Mb Ex eb IIC Gb Ex ta IIIC Da

-20°C ≤ Ta ≤ +130°C

Ex TESTING & CERTIFICATION

IECEX ExTC 20.0005

This document is approved as specified in the listed certificate

THIS DRAWING REMAINS THE PROPERTY OF CMI ELECTRICAL PRODUCTS AND MUST NOT BE LENT OR COPIED.

cmielectrical

A division of CMI Operations Pty Ltd

GENERAL TOLERANCE ±0.25

ANGULAR TOLERANCE ±0.5°

MATERIAL

DESCRIPTION

GWPMH GLAND ASSY (HIGH TEMPERATURE)

SCALE 1 : 1

DATE 26/02/2019

DRAWN SL

CHECKED

DO NOT SCALE DRAWING

DIMENSIONS IN MILLIMETRES

FINISH

A3

DRAWING No. F-GWPMH

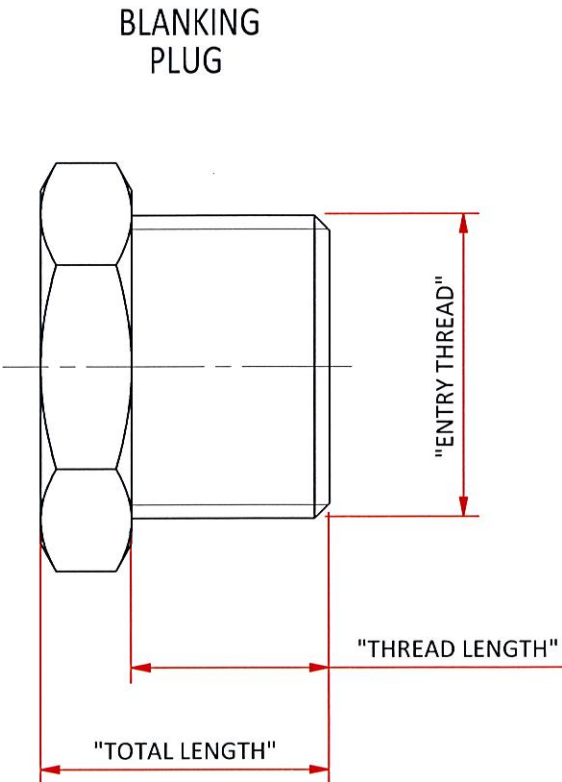
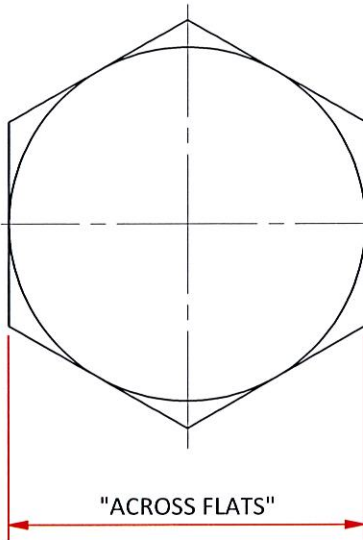
A		DRA 19003: DRAWING ISSUED	01/07/2020	
REV	ZONE	DESCRIPTION	DATE	APPROVED

ASSEMBLY CAT No.		ENTRY THREAD	THREAD LENGTH (MIN)	TOTAL LENGTH	ACROSS FLATS
BRASS	ST.STEEL				
F-PM20H	F-PM20SSH	M20 X 1.5 - 6g	13.0	19.0	22.35 - HEX.
F-PM25H	F-PM25SSH	M25 X 1.5 - 6g	13.0	21.0	28.58 - HEX.
F-PM32H	F-PM32SSH	M32 X 1.5 - 6g	20.0	29.0	37.28 - OCT.
F-PM40H	F-PM40SSH	M40 X 1.5 - 6g	20.0	29.0	56.56 - OCT.

MARKING DETAILS

CMI SUREFIT "ASSEMBLY CAT. No."
(e.g. CMI SUREFIT F-PM32H)

IECEX ExTC 20.0005
Ex db I Mb Ex db IIC Gb Ex eb I Mb Ex eb IIC Gb Ex ta IIC Da
-20°C ≤ Ta ≤ +130°C



SEALING
WASHER

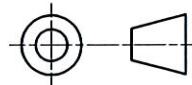


- NOTES:
1. THE SPECIFICATIONS, DIMENSIONS AND RATINGS OF THE BLANKING PLUG COMPLY WITH IEC 60079 EXPLOSIVE ATMOSPHERES.
 2. RECOMMENDED TORQUE SETTING IS 10 Nm FOR SECURING BLANKING PLUG
 3. REFER TO SUREFIT GLAND CATALOGUE FOR FITTING INSTRUCTIONS.
 4. IP66/68 RATING IS 7 METRES FOR 60 MINUTES.
 5. SERVICE TEMPERATURE RANGE IS -20° TO +130°C.
 6. MATERIALS:
BRASS COMPONENTS: FREE CUTTING BRASS C38500 GRADE TO BE NICKEL PLATED TO Cu/Ni 5b TO AS 1192-2004. MAX. PLATING THICKNESS 8µm
STAINLESS COMPONENTS: STAINLESS STEEL GRADE 303/304 or BETTER
SEALING WASHER: VIRGIN PTFE (TEFLON)



This document is approved as specified in the listed certificate

THIS DRAWING REMAINS THE PROPERTY OF CMI ELECTRICAL PRODUCTS AND MUST NOT BE LENT OR COPIED.



DO NOT SCALE DRAWING
DIMENSIONS IN MILLIMETRES



A division of CMI Operations Pty Ltd

GENERAL TOLERANCE ±0.25
ANGULAR TOLERANCE ±0.5°

MATERIAL

FINISH

MINTO INDUSTRIAL PRODUCTS

DESCRIPTION
**BLANKING PLUG ASSEMBLY
(HIGH TEMPERATURE)**

SCALE
2 : 1
DRAWN
SL

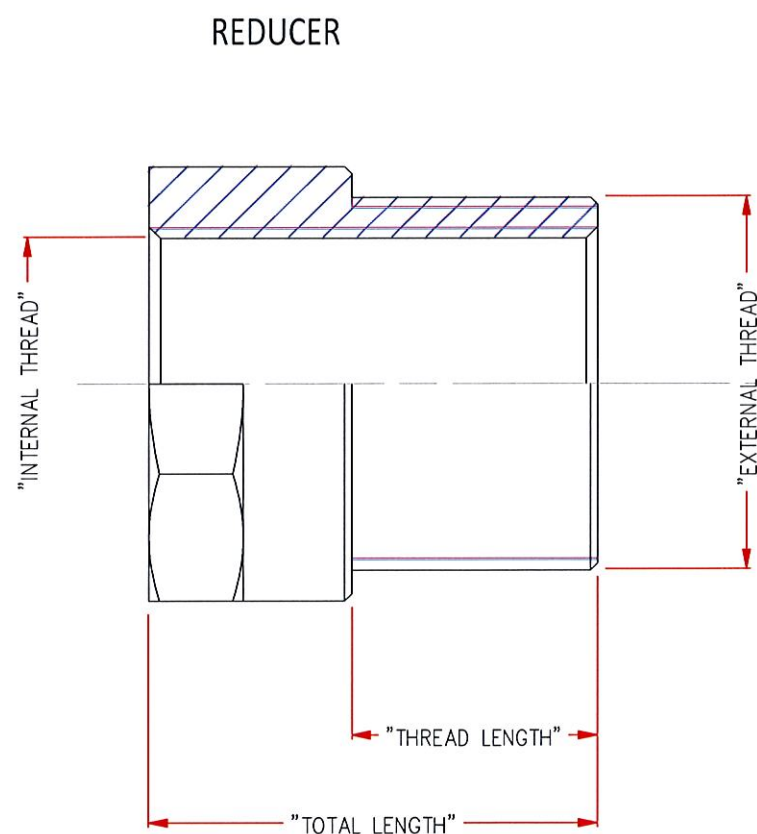
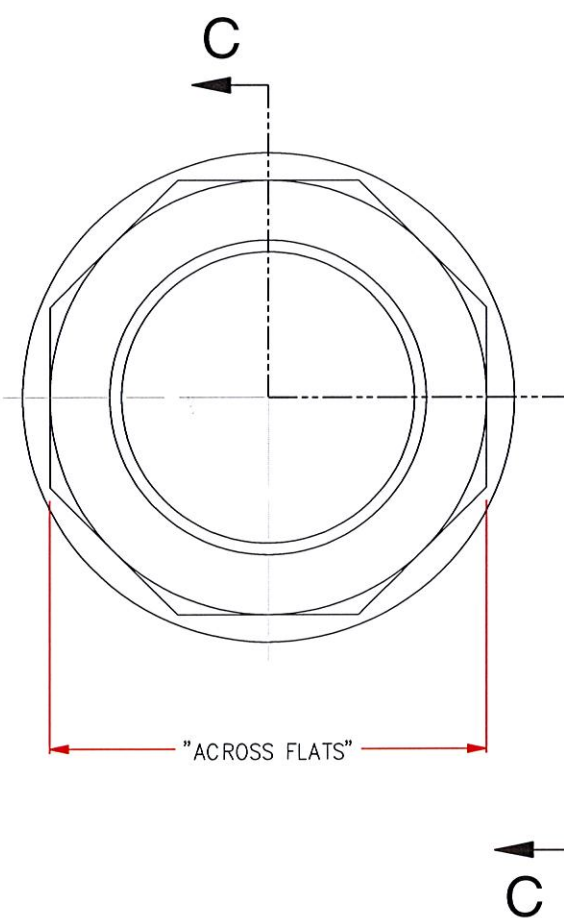
DATE
14/03/2019
CHECKED
TA

A3

DRAWING No.
F-PMH

A	DRA 19003: DRAWING ISSUED	01/07/2020	APPROVED
REV	ZONE	DESCRIPTION	DATE

ASSEMBLY CAT No.		EXTERNAL THREAD	INTERNAL THREAD	MINIMUM EXTERNAL THREAD LENGTH	TOTAL LENGTH	ACROSS FLATS
BRASS	ST. STEEL					
F-RM2016H	F-RM2016SSH	M20 X 1.5 - 6g	M16 X 1.5 - 6H	13	27.2	22.35 - HEX.
F-RM2516H	F-RM2516SSH	M25 X 1.5 - 6g	M16 X 1.5 - 6H	13	30.2	28.58 - HEX.
F-RM2520H	F-RM2520SSH	M25 X 1.5 - 6g	M20 X 1.5 - 6H	13	30.2	28.58 - HEX.
F-RM3216H	F-RM3216SSH	M32 X 1.5 - 6g	M16 X 1.5 - 6H	20	38.2	37.28 - OCT.
F-RM3220H	F-RM3220SSH	M32 X 1.5 - 6g	M20 X 1.5 - 6H	20	38.2	37.28 - OCT.
F-RM3225H	F-RM3225SSH	M32 X 1.5 - 6g	M25 X 1.5 - 6H	20	38.2	37.28 - OCT.
F-RM4016H	F-RM4016SSH	M40 X 1.5 - 6g	M16 X 1.5 - 6H	20	38.2	56.56 - OCT.
F-RM4020H	F-RM4020SSH	M40 X 1.5 - 6g	M20 X 1.5 - 6H	20	38.2	56.56 - OCT.
F-RM4025H	F-RM4025SSH	M40 X 1.5 - 6g	M25 X 1.5 - 6H	20	38.2	56.56 - OCT.
F-RM4032H	F-RM4032SSH	M40 X 1.5 - 6g	M32 X 1.5 - 6H	20	38.2	56.56 - OCT.



SEALING WASHER

MARKING DETAILS
CMI SUREFIT "ASSEMBLY CAT. No."
(e.g. CMI SUREFIT F-RM3220H)
IECEX ExTC 20.0005
Ex db I Mb Ex db IIC Gb Ex eb I Mb Ex eb IIC Gb Ex ta IIIC Da
-20°C ≤ Ta ≤ +130°C

- NOTES:
1. THE SPECIFICATIONS, DIMENSIONS AND RATINGS OF THE REDUCER COMPLY WITH IEC 60079 EXPLOSIVE ATMOSPHERES.
 2. RECOMMENDED TORQUE SETTING IS 10 Nm FOR SECURING REDUCER.
 3. REFER TO SUREFIT GLAND CATALOGUE FOR FITTING INSTRUCTIONS.
 4. IP66/68 RATING IS 7 METRES FOR 60 MINUTES.
 5. SERVICE TEMPERATURE RANGE IS -20° TO +130°C.
 6. MATERIALS:
BRASS COMPONENTS: FREE CUTTING BRASS C38500 GRADE TO BE NICKEL PLATED TO Cu/Ni 5b TO AS 1192-2004. MAX. PLATING THICKNESS 8µm
STAINLESS COMPONENTS: STAINLESS STEEL GRADE 303/304 or BETTER
SEALING WASHER: VIRGIN PTFE (TEFLON)



THIS DRAWING REMAINS THE PROPERTY OF CMI ELECTRICAL PRODUCTS AND MUST NOT BE LENT OR COPIED.



MINTO INDUSTRIAL PRODUCTS

DO NOT SCALE DRAWING
DIMENSIONS IN MILLIMETRES

GENERAL TOLERANCE ±0.25
ANGULAR TOLERANCE ±0.5°
MATERIAL
FINISH

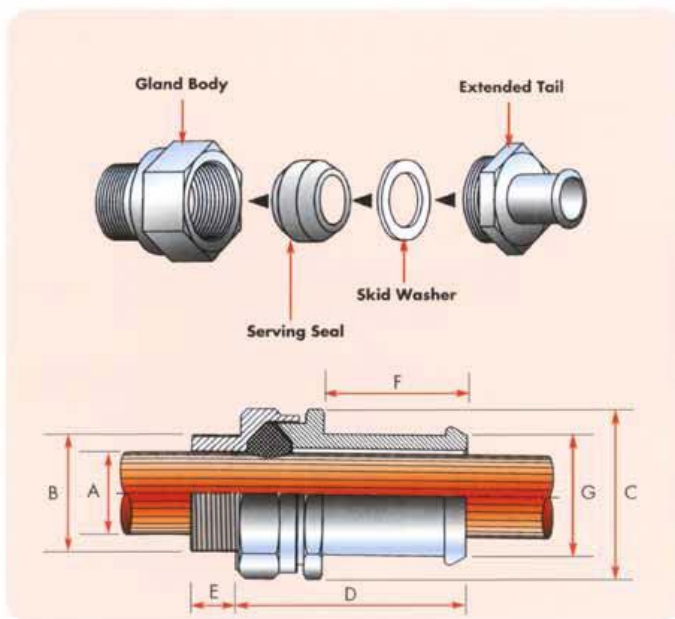
DESCRIPTION
REDUCER ASSEMBLY
(HIGH TEMPERATURE)
SCALE N/A DATE 14/03/2019
DRAWN SL CHECKED 1A
DRAWING No. A3 F-RMH

A	DRA 19003: DRAWING ISSUED	01/07/2020	APPROVED
REV	ZONE	DESCRIPTION	DATE

Fitting Instructions for Surefit GWPMH Series Explosion Protected Glands

Fitting Instructions:

1. Disassemble Back Nut/Extended Tail, Skid Washer and Serving Seal from Gland Body
*Either Back Nut (not shown) or Extended Tail options available
2. Assemble Gland Body to equipment, using Sealing Washer if required (not shown)
3. Insert cable through Back Nut/Extended Tail, Skid Washer, Serving Seal and Gland Body to length required
4. Assemble Serving Seal, Skid Washer and Back Nut/Extended Tail onto Gland Body
5. Tighten Back Nut/Extended Tail to recommended torque values
6. Fit conduit or hose, over Extended Tail spigot and secure with suitable clamp (not shown)



GLAND	* TORQUE (Nm)	** TORQUE (Nm)
GWPM0H	10	25
GWMPM1H	10	25
GWMP1AH	10	25
GWPM1BSSH	10	40
GWPM1B-25H	10	40
GWPM2H	10	45
GWPM2ASSH	10	40
GWPM2A-32H	10	40
GWPM3H	10	30
GWPM3AH	10	40
GWPM4H	10	60
GWPM4AH	10	90



Note 1:

- Refer to CMI Catalogue for dimensional details or cable gland selection criteria
- (*) Gland Body torque values
- (**) Back Nut/Extended Tail torque values

Note 2 - Reuse of Surefit Glands:

As the integrity of Surefit Glands that have been in use cannot be guaranteed, CMI Electrical do not recommend their reuse.

Certification details:

- Certification type: IEC 60079.0 – 2011; IEC 60079.1 – 2014; IEC 60079.7 – 2017; IEC 60079.31 – 2013; IEC 60529 – 2013
- Certificate of Conformity: IECEx ExTC 20.0005
- Protection type: Ex db I Mb, Ex db IIC Gb, Ex eb I Mb, Ex eb IIC Gb, Ex ta IIIC Da -20°C ≤ Ta ≤ +130°C
- Ingress Protection rating: IP 66/68* (* 7.0 m for 1.0 hr – requires the use of a Sealing Washer)

This brochure is distributed with the understanding that the authors and editors are not responsible for the results of any actions taken on the basis of the information in this work, or any errors or omissions. Further, Minto Industrial Products is not engaged in rendering professional services. Minto Industrial Products expressly disclaims all and any liability to any person in respect of anything and of the consequences of anything done or omitted to be done by any such person in reliance whether whole or partial of the whole on any part of the contents of this publication. All rights reserved. No part of this work covered by copyright may be reproduced or copied in any form or by any means without the written permission of Minto Industrial Products.

TSG-1H Surefit Glands GWPMH Fitting Instruction Rev: A – 01/07/2020