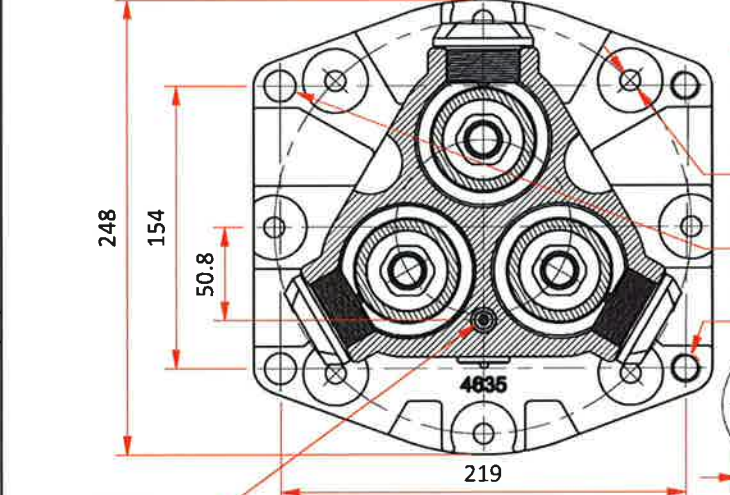
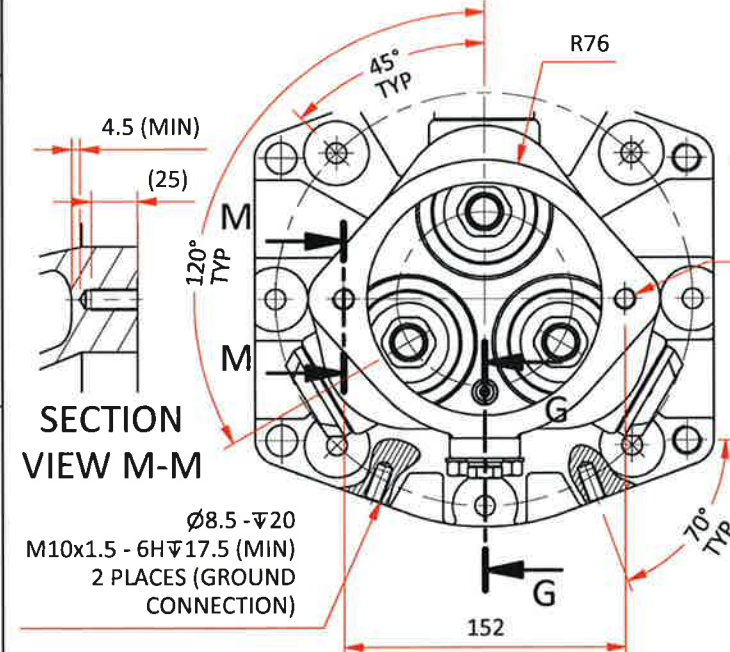


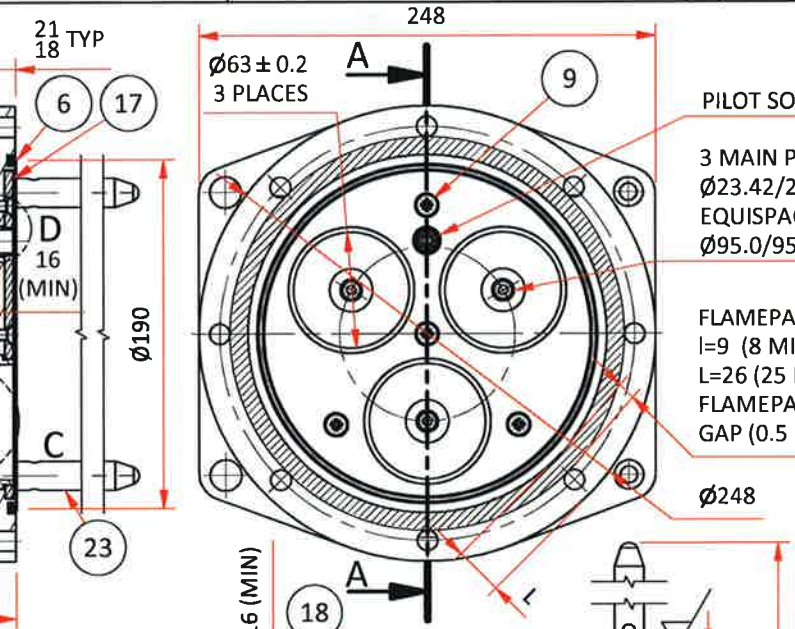
SECTION VIEW A-A



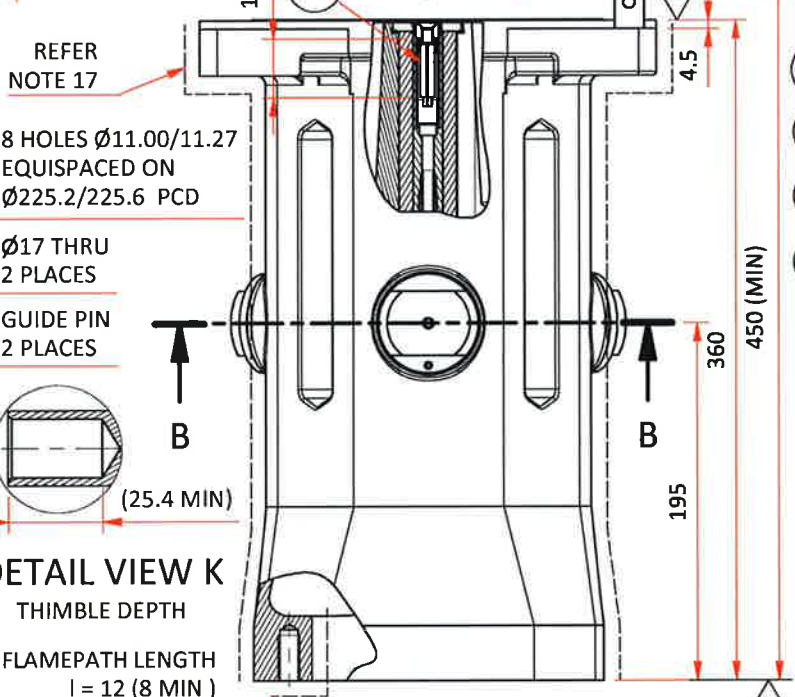
SECTION VIEW B-B
(OPTIONAL) INDICATOR LIGHT LAYOUT



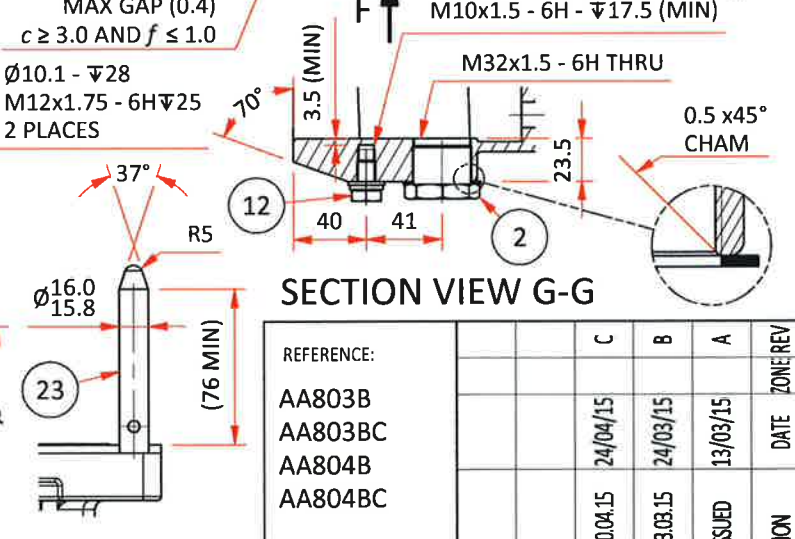
SECTION VIEW M-M



PILOT SOCKET



DETAIL VIEW K
THIMBLE DEPTH

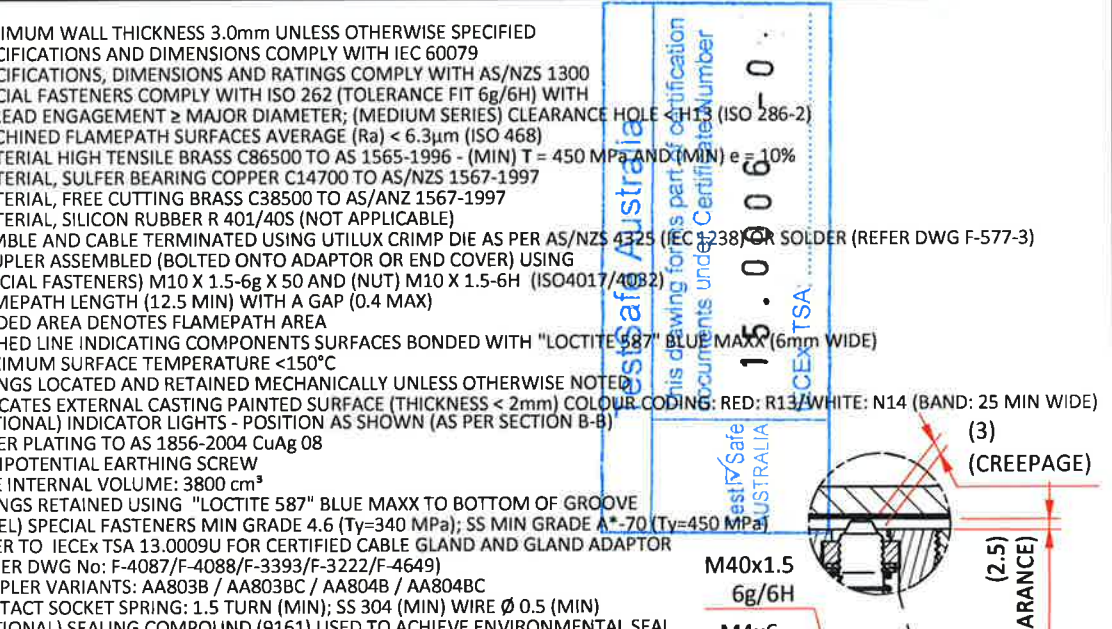


SECTION VIEW G-G

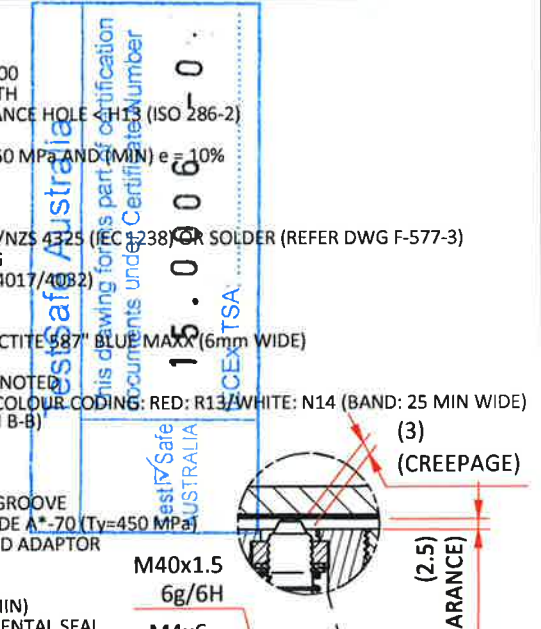
DETAIL VIEW
GUIDE PIN - 2 PLACES



DETAIL VIEW C
PIN SOCKET (CLEARANCE AND CREEPAGE)



DETAIL VIEW D
PILOT SOCKET (CLEARANCE AND CREEPAGE)



DETAIL VIEW E
3 PLACES - REFER NOTE 18

ITEM	PART	DESCRIPTION	MATERIAL	QTY
23	3378	11KV GUIDE PIN	SS 304 - REF NOTE 23	2
22	201/3641 SERIES	MAIN THIMBLE	REF NOTE 7, 19	3
21	4611	PILOT THIMBLE	REF NOTE 7	1
20	4635B	11KV BOLTED COUPLER BODY CASTING	REF NOTE 6	1
19	4639	11KV PILOT INSULATOR	TETRON S	1
18	4641	800A 11KV PILOT SOCKET	REF NOTE 7, 19	1
17	4644	11KV INTERIOR RETAINING PLATE	REF NOTE 6	1
16	4647	800A 11KV MAIN PIN	REF NOTE 7, 19	3
15	4668	800A 11KV MAIN PIN INSULATOR	TETRON S	3
14	AH009788	3/16" X No.4 U-DRIVE SCREW	STEEL-ZINC PLATING (MIN 4.6)	2
13	AH009868	1/4" UNC X 21/4" SKT HD SCREW	SS 304 - REF NOTE 23	3
12	AH113111	M10 x 16 HEX HEAD SCREW - REF NOTE 20	STEEL-ZINC PLATING	1
11	AH150011	M10 X 20 X 1.6 WASHER	STEEL-ZINC PLATING	1
10	AH151011	M10 SQ SPRING WASHER	STEEL-ZINC PLATING	1
9	AH151037	M6 X 12 CSK HD SCREW	SS 304 - REF NOTE 23	4
8	AH201364	CONTACT SOCKET SPRING	SS 304 - REF NOTE 23	2
7	AI015075	65-24 CNTM H/S 30MM	NEOPRENE RUBBER	3
6	AI018994	O'RING ID 184.0 X SECT 5.00	NITRILE - REF NOTE 22	1
5	AI019018	O'RING ID 14.0 X SECT 1.78	NITRILE	2
4	AI019022	O'RING ID 17.17 X SECT 1.78	NITRILE	3
3	4076	RATING PLATE	C26000 CARTRIDGE BRASS 70-30	1
2	F-PM32	BLANKING PLUG ASSEMBLY	REF NOTE 8 (20 - MIN THREAD LENGTH)	1
1	F-4671	11KV INDICATOR LIGHT ASSEMBLY (OPTIONAL)	REF NOTE 8	3

ITEM	PART	DESCRIPTION	MATERIAL	QTY
23	3378	11KV GUIDE PIN	SS 304 - REF NOTE 23	2
22	201/3641 SERIES	MAIN THIMBLE	REF NOTE 7, 19	3
21	4611	PILOT THIMBLE	REF NOTE 7	1
20	4635B	11KV BOLTED COUPLER BODY CASTING	REF NOTE 6	1
19	4639	11KV PILOT INSULATOR	TETRON S	1
18	4641	800A 11KV PILOT SOCKET	REF NOTE 7, 19	1
17	4644	11KV INTERIOR RETAINING PLATE	REF NOTE 6	1
16	4647	800A 11KV MAIN PIN	REF NOTE 7, 19	3
15	4668	800A 11KV MAIN PIN INSULATOR	TETRON S	3
14	AH009788	3/16" X No.4 U-DRIVE SCREW	STEEL-ZINC PLATING (MIN 4.6)	2
13	AH009868	1/4" UNC X 21/4" SKT HD SCREW	SS 304 - REF NOTE 23	3
12	AH113111	M10 x 16 HEX HEAD SCREW - REF NOTE 20	STEEL-ZINC PLATING	1
11	AH150011	M10 X 20 X 1.6 WASHER	STEEL-ZINC PLATING	1
10	AH151011	M10 SQ SPRING WASHER	STEEL-ZINC PLATING	1
9	AH151037	M6 X 12 CSK HD SCREW	SS 304 - REF NOTE 23	4
8	AH201364	CONTACT SOCKET SPRING	SS 304 - REF NOTE 23	2
7	AI015075	65-24 CNTM H/S 30MM	NEOPRENE RUBBER	3
6	AI018994	O'RING ID 184.0 X SECT 5.00	NITRILE - REF NOTE 22	1
5	AI019018	O'RING ID 14.0 X SECT 1.78	NITRILE	2
4	AI019022	O'RING ID 17.17 X SECT 1.78	NITRILE	3
3	4076	RATING PLATE	C26000 CARTRIDGE BRASS 70-30	1
2	F-PM32	BLANKING PLUG ASSEMBLY	REF NOTE 8 (20 - MIN THREAD LENGTH)	1
1	F-4671	11KV INDICATOR LIGHT ASSEMBLY (OPTIONAL)	REF NOTE 8	3

REFERENCE:

AA803B
AA803BC
AA804B
AA804BC

ISSUE LIST

24/04/15	24/03/15	13/03/15
----------	----------	----------

DATE

24/04/15

REVISION

ISSUE LIST

REF No: F-577-1 / F-577-3

THIS DRAWING REMAINS THE PROPERTY OF CMI ELECTRICAL PRODUCTS AND MUST NOT BE LENT OR COPIED.

Electrical Products

A division of CMI Operations Pty Ltd

GENERAL TOLERANCE ±0.25 UNLESS OTHERWISE SPECIFIED

MATERIAL

VARIOUS

FINISH

VARIOUS

DO NOT SCALE DRAWING. DIMENSIONS IN MILLIMETRES.

DESCRIPTION

800A 11KV BOLTED COUPLER BODY SIZE "D"

SCALE

1:4

DATE

30/10/14

DRAWN

SL

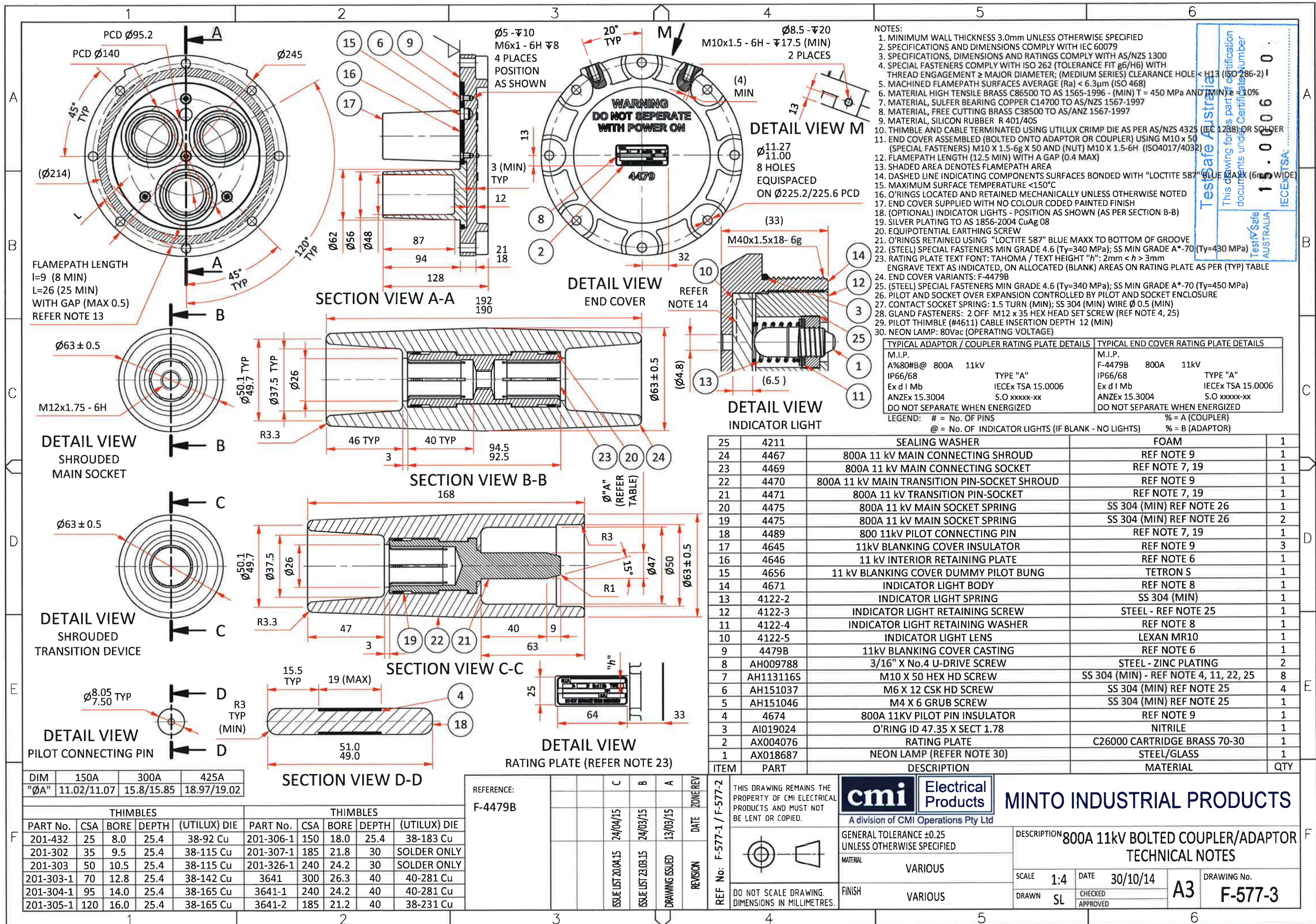
CHECKED

APPROVED

DRAWING No.

A3

F-577-2



Termination and Maintenance Instructions for Body Size D **Bolted Range**

The equipment is certified to IECEx TSA 15.0006 and ANZEx 15.3004 (maximum operating temperature 150 °C) and is designed to AS/NZS1300, IEC 60079-0 & 60079-1. It is recommended that the equipment be overhauled at intervals that do not exceed the requirements of AS/NZS2290.1. Maintain to the requirements of AS/NZS3800 and AS/NZS1747 by suitably competent persons.

• **Installation**

- Confirm components suitable for application e.g. thimbles and grommets suitable for the conductors and cable.
- Gland fitting cable preparation.
 - Slide the gland cap, neoprene cone and plug body along the cable.
 - Prepare the cable to the dimensions given in the strip back table (below).
 - Crimp or solder the thimbles to the phase, pilot and earth cores.

NB- for more information refer to TCG-1 No.2 to No.5 Glands & Threaded Gland Adaptor Termination and Maintenance instruction.

Strip Back Dimensions (mm)			
	A (Phase)	B (Earth)	C (Pilot)
AA803B / AA803BC / AA804B / AA804BC	258	200	280

NB- Cables with semi conductive phase screening shall have the semi conductive screen removed back to the outer sheath.

• **Coupler Fitting**

- Fit the conductors to the appropriate location securing in place with screw through socket where appropriate
- Assemble the coupler, ensuring the interior rotation conforms to AS/NZS1300
- Then fit blanking cover (F-4479B) if required. Care should be taken not to damage the flange flamepath.
- Slide the neoprene cone into position and bolt the gland cap firmly to the body (25Nm).
- Test as per the requirements of AS/NZS1747.

• **Connection of Protective Earthing Conductors**

- This range of bolted couplers and adaptors has facility for earthing conductors up to 150² mm.
- It is the responsibility of the installer to determine and fit the correct sized earth conductors.

• **Adaptor fitting**

- For adaptor mounting dimensions refer to AS/NZS1300.
The flange flamepath used to assemble the adaptor to a flameproof enclosure shall have a (MIN) width 12.5mm and (MAX) gap 0.4mm
- Attach to enclosure via special fasteners.
The special fasteners and/or nuts shall be of minimum grade 4.6 (minimum Yield strength 240MPa)
- Terminate conductors as listed in the installation instructions above.
- Prepare the cable to the dimensions given in Drawing No: F-577-3

• **Use**

- Isolate power before connecting or disconnecting.
- The special fasteners used to assemble the plug and gland shall be minimum grade 4.6 (yield stress 240MPa) or for stainless steel minimum grade A*-70 (Yield stress 450MPa).
- Operating temperature range -20°C to +40°C and average temperature over 24 hours is not to exceed 35°C

• **Assembly**

- Ensure sockets are clean and serviceable.
- Correct pin alignment.
- Bolt together using M10 x 60 special fasteners.

This brochure is distributed with the understanding that the authors and editors are not responsible for the results of any actions taken on the basis of the information in this work, or any errors or omission. Further, Minto Industrial Products is not engaged in rendering professional services. Minto Industrial Products expressly disclaims all and any liability to any person in respect of anything and of the consequences of anything done or omitted to be done by any such person in reliance whether whole or partial of the whole or any part of the contents of this publication. All rights reserved. No part of this work covered by copyright may be reproduced or copied in any form or by any means without the written permission of Minto Industrial Products.

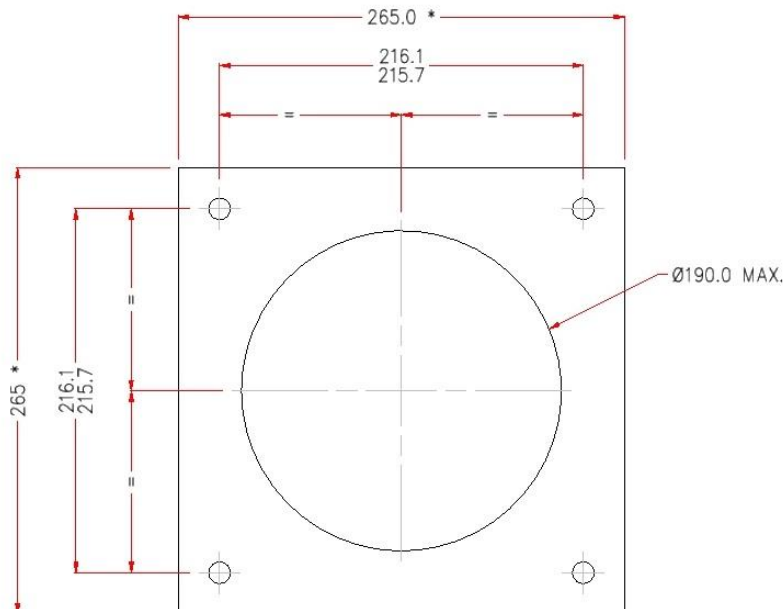
- **Disassembly**
 - Remove M10 x 60 bolts to separate.
 - Fit blanking cover to flange.
- **Maintenance**
 - Inspection shall include cleanliness and compliance with certification documentation.
 - Check as per AS/NZS2290.1
- **Overhaul and Repair**
 - To be carried out by a suitable workshop.
- **Certification Details:**

Certified to: IEC 60079-0: 2011 (Incorporating Corrigendum 1 & 2); IEC 60079-1:2007 (Incorporating Corrigendum 1); AS/NZS 1300:2009 (incorporating amendment No.1)
 Certificate of Conformity: IECEx TSA 15.0006; ANZEx 15.3004
 Type of Protection: Ex d I Mb
 Type (AS/NZS 1300) Type A
 Ingress Protection: IP 66/68* (2.0 M for 30 minutes)

• **Certification Nameplate Details:**

TYPICAL ADAPTOR / COUPLER RATING PLATE DETAILS	TYPICAL END COVER RATING PLATE DETAILS
M.I.P.	M.I.P.
A%80#B@ 800A 11kV	F-4479B 800A 11kV
IP66/68 TYPE "A"	IP66/68 TYPE "A"
Ex d I Mb IECEx TSA 15.0006	Ex d I Mb IECEx TSA 15.0006
ANZEx 15.3004 S.O xxxxx-xx	ANZEx 15.3004 S.O xxxxx-xx
DO NOT SEPARATE WHEN ENERGIZED	DO NOT SEPARATE WHEN ENERGIZED
LEGEND: # = No. OF PINS	% = A (COUPLER)
@ = No. OF INDICATOR LIGHTS (IF BLANK - NO LIGHTS)	% = B (ADAPTOR)

Mounting Details



* Dimensions shown is the Enclosure Machining Area.
Untoleranced dimensions ± 0.25

NB. Bolted Adaptor mounting fasteners are to comply with AS/NZS 60079.0 and 1.

This brochure is distributed with the understanding that the authors and editors are not responsible for the results of any actions taken on the basis of the information in this work, or any errors or omission. Further, Minto Industrial Products is not engaged in rendering professional services. Minto Industrial Products expressly disclaims all and any liability to any person in respect of anything and of the consequences of anything done or omitted to be done by any such person in reliance whether whole or partial of the whole or any part of the contents of this publication. All rights reserved. No part of this work covered by copyright may be reproduced or copied in any form or by any means without the written permission of Minto Industrial Products.