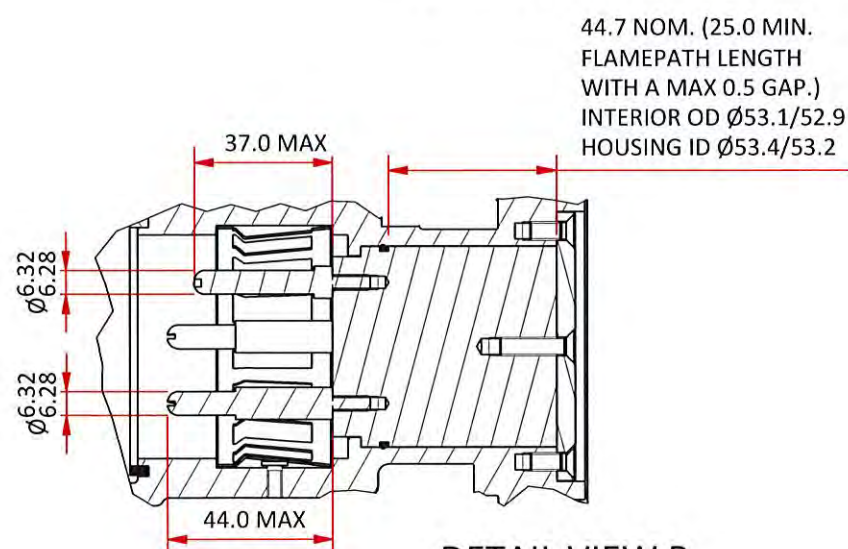
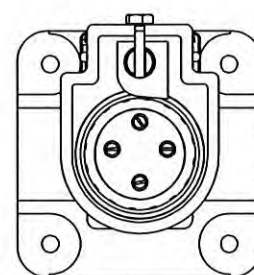


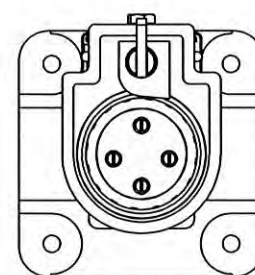
SECTION VIEW A-A



DETAIL VIEW B



1100V
G13 EMERALD GREEN
B24 BLUE BAND 25MM



660V
G13 EMERALD GREEN
X15 ORANGE BAND 25MM

CONFIGURATION

MARKING DETAILS

M.I.P
AG6#4BE
60A
VOLTS 6 = 660V
1 = 1100V
IP66/68
Ex db I Mb
IECEx ExTC 21.0017X
ANZEx 22.4176X
TYPE A
S.O xxxxx-xx
WARNING
DO NOT SEPARATE WHEN ENERGIZED

NOTES:

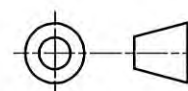
1. MINIMUM WALL THICKNESS 3.0mm UNLESS OTHERWISE SPECIFIED ON THE DRAWING.
2. IN THE CASE OF BLIND HOLES FOR SCREWS, THE REMAINING THICKNESS OF MATERIAL UNDER THE HOLE IS A MINIMUM OF ONE THIRD OF THE SCREW DIAMETER OR 3MM, WHICHEVER IS GREATER.
3. FLANGE THICKNESS AT BOLT HOLE IS 13.0-16.0mm.
4. THE SPECIFICATIONS, DIMENSIONS AND RATINGS COMPLY WITH AS/NZS 1299 ELECTRICAL EQUIPMENT FOR MINES AND QUARRIES.
5. ALL MACHINED FLAMEPATH SURFACES AVERAGE Ra DOES NOT EXCEED 6.3µm (ISO 468).
6. MATERIAL HIGH TENSILE BRASS C86500 TO AS 1565-1996 WITH A MINIMUM TENSILE STRENGTH 450 MPa AND MINIMUM 10% ELONGATION.
7. MINIMUM PROPERTY CLASS FOR STAINLESS STEEL FASTENERS IS A*-70.
8. MINIMUM PROPERTY CLASS FOR MILD STEEL FASTENERS IS 4.6.
9. IP66/68 (2 METERS FOR 30 MINUTES).



ITEM	QTY	PART NUMBER	DESCRIPTION	MATERIAL
22	1	AH002972	5/32" X 1" SELLOCK PIN	STEEL-ZINC PL.
21	1	3028	SCRAPING EARTH CONTACT	PHOSPHOR BRONZE
20	1	4569E	60A PILOT PIN	ST. STEEL
19	3	4566E	60A MAIN PIN	ST. STEEL
18	1	4401-1	60A SEALING RING	NEOPRENE RUBBER
17	1	AH151016	M4 X 20 CH HD SCREW	BRASS
16	1	AI019008	O'RING ID 47.35 X SECT 1.78	NITRILE
15	1	AI019006	O'RING ID 82.14 X SECT 3.53	NITRILE
14	1	4564E	60A RECEPTACLE INTERIOR	FREE CUTTING BRASS C38500 OR ST. STEEL
13	4	AH112500	M5 X 20 CSK PHILLIPS HD SCREW	ST. STEEL
12	1	4571E	60A INTERIOR RETAINING PLATE	FREE CUTTING BRASS C38500 OR ST. STEEL
11	2	AH151034	M5 X 12 CSK PHILLIPS HD SCREW	ST. STEEL
10	1	AH009363	5/16" SQ SECT SPRING WASHER	STEEL-ZINC PL.
9	1	AH113091	M8 X 10 HEX HD SET SCREW	STEEL-ZINC PL.
8	1	AH009007	5/16" UNF NYLOC NUT	ST. STEEL
7	3	AH009277	5/16" X 5/8" X 18 WASHER	STEEL-ZINC PL.
6	1	3427-1B	60A JACKING SCREW PAWL	HIGH TENSILE BRASS - NOTE 7
5	1	3407	60A JACKING SCREW SPINDLE	ST. STEEL
4	1	3406	60A JACKING SCREW HANDLE	STEEL-ZINC PL.
3	1	AX004076	RATING PLATE	C26000 CARTRIDGE BRASS 70-30
2	2	AH009788	3/16" X No.4 U-DRIVE SCREW	STEEL-ZINC PL.
1	1	3492B	60A RECEPTACLE BODY CASTING	HIGH TENSILE BRASS - NOTE 7

Parts List

THIS DRAWING REMAINS THE PROPERTY OF CMI ELECTRICAL PRODUCTS AND MUST NOT BE LENT OR COPIED.



DO NOT SCALE DRAWING DIMENSIONS IN MILLIMETRES

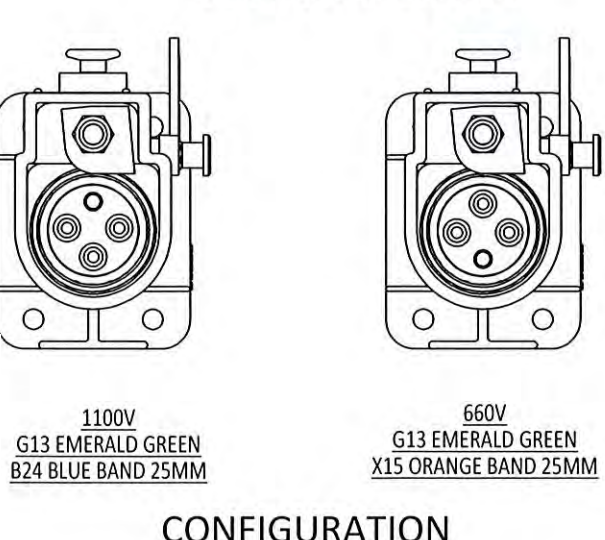
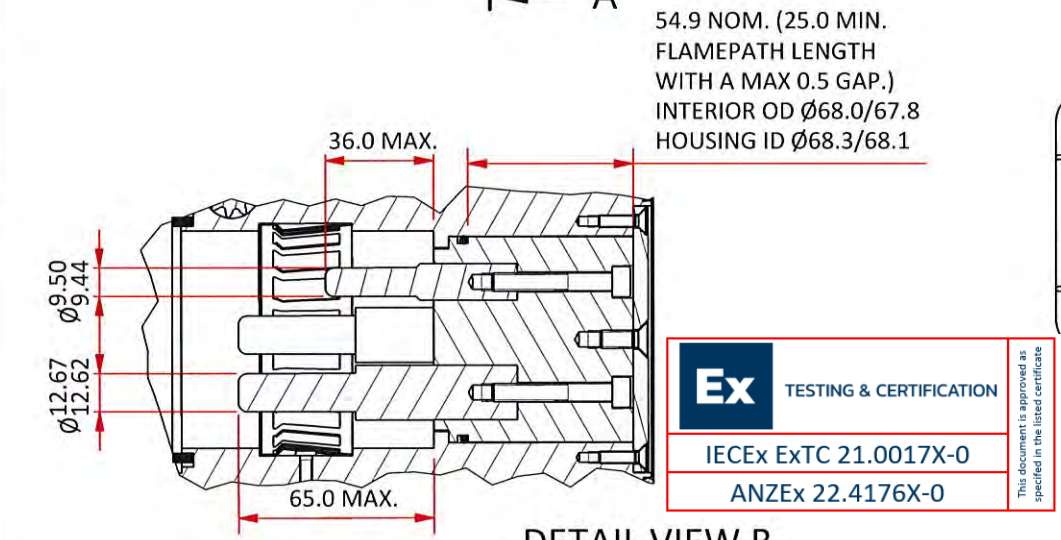
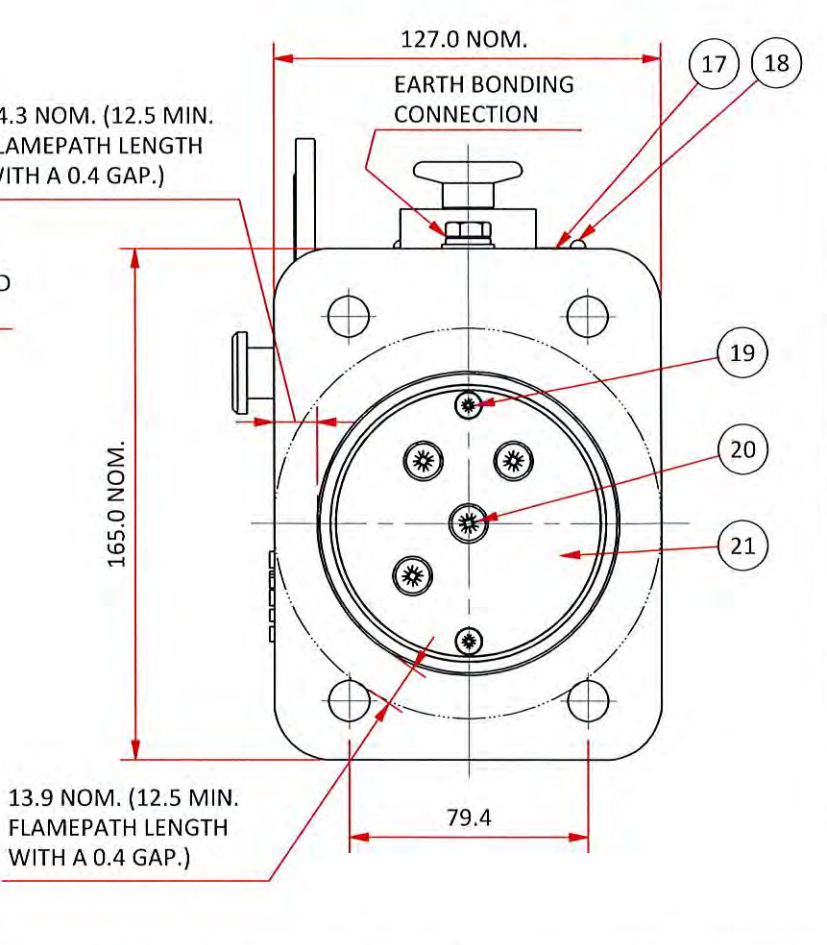
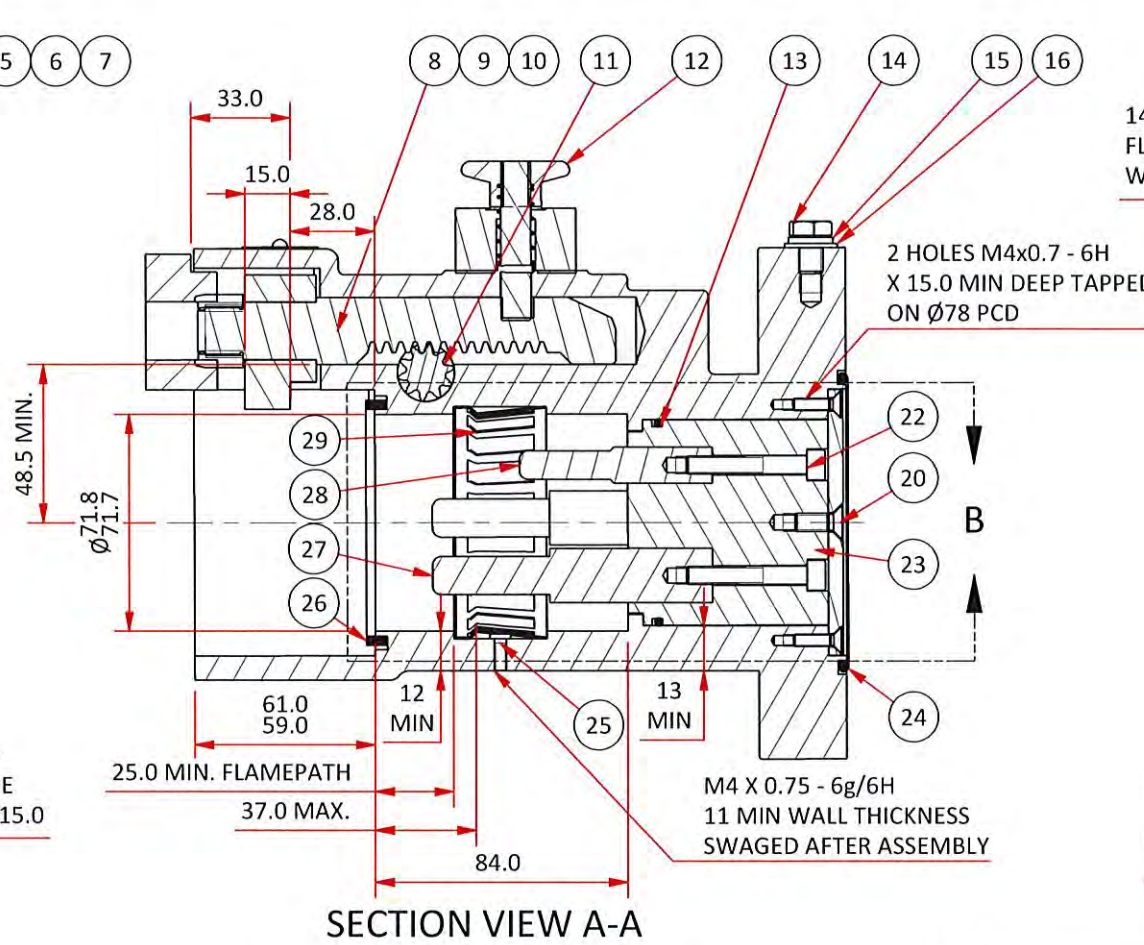
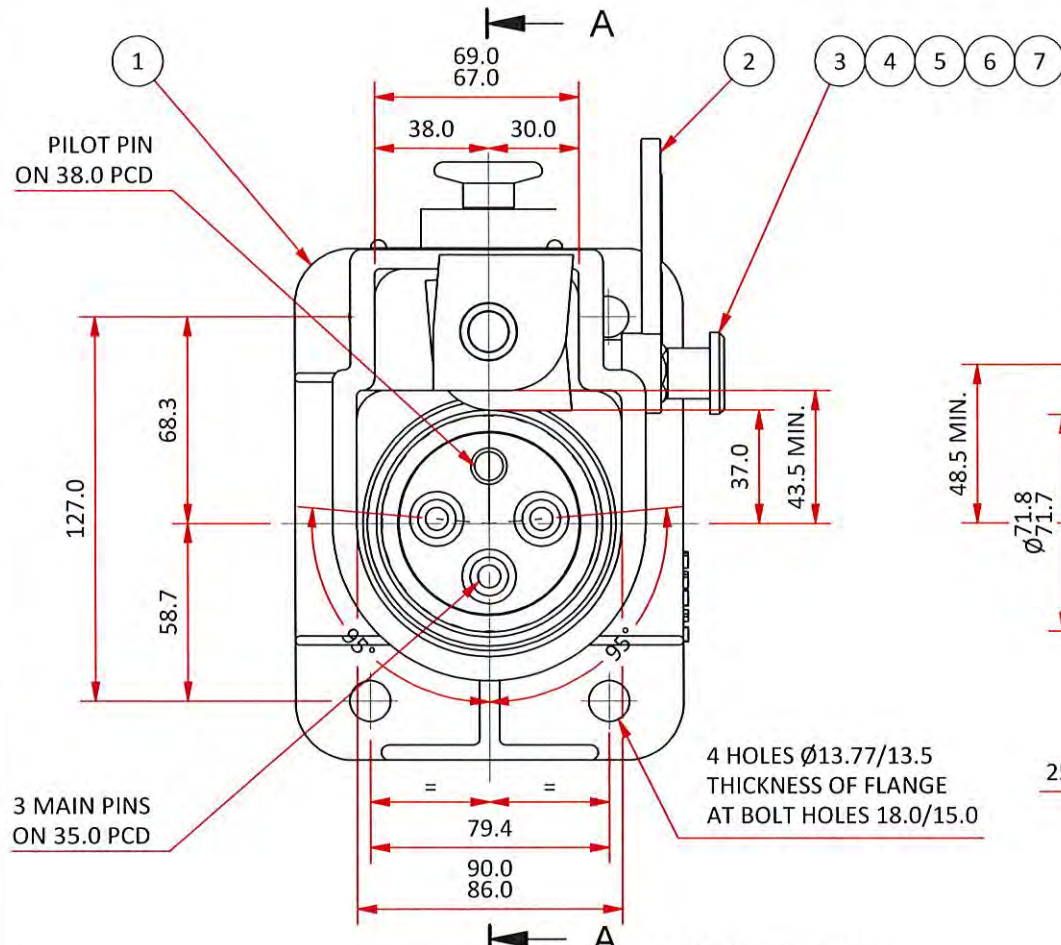


A division of CMI Operations Pty Ltd

GENERAL TOLERANCE ±0.25
ANGULAR TOLERANCE ±0.5°
MATERIAL SEE TABLE
FINISH COLOUR CODE TO AS/NZS 1299

MINTO INDUSTRIAL PRODUCTS

DESCRIPTION 60A 660/1100V
RESTRAINED EARTHING RECEPTACLE
SCALE 1:2 DATE 29/11/2021
DRAWN ASB CHECKED 13
DRAWING No. A3 F-880



ITEM	QTY	PART NUMBER	DESCRIPTION	MATERIAL
29	1	3028-1	SCRAPING EARTH CONTACT	PHOSPHOR BRONZE
28	1	4625-1E	150A PILOT PIN	ST. STEEL
27	3	4623E	150A MAIN PIN	ST. STEEL
26	1	4401-2	SEAL	NEOPRENE RUBBER
25	1	AH151016	M4 X 20 CH HD SCREW	BRASS
24	1	A1019011	O-RING ID 91.67 X SECT 3.53	NITRILE
23	1	4621E	150A RECEPTACLE INTERIOR	FREE CUTTING BRASS C38500 OR ST. STEEL
22	4	AH115147	M6 X 40 SS SKT HD CAP SCREW	ST. STEEL
21	1	4628E	150A INTERIOR RETAINING PLATE	FREE CUTTING BRASS C38500 OR ST. STEEL
20	4	AH151028	M6 X 16 CSK PHILLIPS HD SCREW	ST. STEEL
19	2	AH151022	M4 X 16 CSK PHILLIPS HD SCREW	ST. STEEL
18	2	AH009788	3/16" X No.4 U-DRIVE SCREW	STEEL-ZINC PL.
17	1	AX004076	RATING PLATE	C26000 CARTRIDGE BRASS 70-30
16	1	AH009277	5/16" X 5/8" X 18 WASHER	STEEL-ZINC PL.
15	1	AH009363	5/16" SQ SECT SPRING WASHER	STEEL-ZINC PL.
14	1	AH113091	M8 X 10 HEX HD SET SCREW	STEEL-ZINC PL.
13	1	A1019003	O-RING ID 63.17 X SECT 2.62	NITRILE
12	1	F-459 SERIES	Q/R LOCKING MECHANISM ASSEMBLY	FREE CUTTING BRASS / ST. STEEL
11	1	4287	150A JACKING RACK PINION	ST. STEEL
10	1	AH151013	M16 NYLOC NUT	STEEL-ZINC PL.
9	1	4262	Q/R PAWL	ST. STEEL
8	1	4254-4	150/300A JACKING RACK	ST. STEEL
7	1	AH009008	7/16" UNF NYLOC NUT	STEEL-ZINC PL.
6	1	AH009268	7/16" X 7/8" X 16 WASHER	STEEL-ZINC PL.
5	1	4288	Q/R PINION BUSH	FREE CUTTING BRASS
4	1	AH115093	M8 X 16 SKT HD CAP SCREW	STEEL-ZINC PL.
3	1	4308	Q/R HANDLE BUSH	BRASS-NICKEL PL.
2	1	4285	Q/R HANDLE	ST. STEEL
1	1	3184BQR	150A Q/R RECEPTACLE BODY CASTING	HIGH TENSILE BRASS - NOTE 7

MARKING DETAILS

M.I.P
AG1#4BQRE
150A
VOLTS 6 = 660V
1 = 1100V

IP66/68
Ex db I Mb
IECEx ExTC 21.0017X
ANZEx 22.4176X
TYPE A
S.O xxxxx-xx
WARNING
DO NOT SEPARATE WHEN ENERGIZED

DETAIL VIEW B

CONFIGURATION

- NOTES:
1. MINIMUM WALL THICKNESS 3.0mm UNLESS OTHERWISE SPECIFIED ON THE DRAWING.
 2. IN THE CASE OF BLIND HOLES FOR SCREWS, THE REMAINING THICKNESS OF MATERIAL UNDER THE HOLE IS A MINIMUM OF ONE THIRD OF THE SCREW DIAMETER OR 3MM, WHICHEVER IS GREATER.
 3. FLANGE THICKNESS AT BOLT HOLE IS 15.0-18.0mm.
 4. THE SPECIFICATIONS, DIMENSIONS AND RATINGS COMPLY WITH AS/NZS 1299 ELECTRICAL EQUIPMENT FOR MINES AND QUARRIES.
 5. ALL MACHINED FLAMEPATH SURFACES AVERAGE Ra DOES NOT EXCEED 6.3µm (ISO 468).
 6. MATERIAL HIGH TENSILE BRASS C86500 TO AS 1565-1996 WITH A MINIMUM TENSILE STRENGTH 450 MPa AND MINIMUM 10% ELONGATION.
 7. MINIMUM PROPERTY CLASS FOR STAINLESS STEEL FASTENERS IS A*-70.
 8. MINIMUM PROPERTY CLASS FOR MILD STEEL FASTENERS IS 4.6.
 9. IP66/68 (2 METERS FOR 30 MINUTES).

A	REV	ZONE	DESCRIPTION	DATE	APPROVED
				01/04/2022	

THIS DRAWING REMAINS THE PROPERTY OF CMI ELECTRICAL PRODUCTS AND MUST NOT BE LENT OR COPIED.

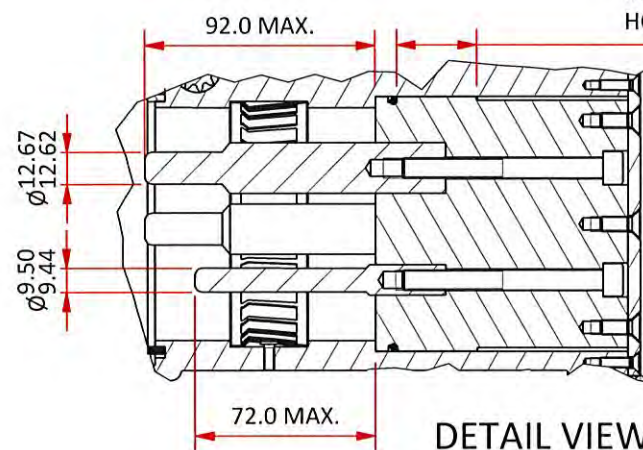
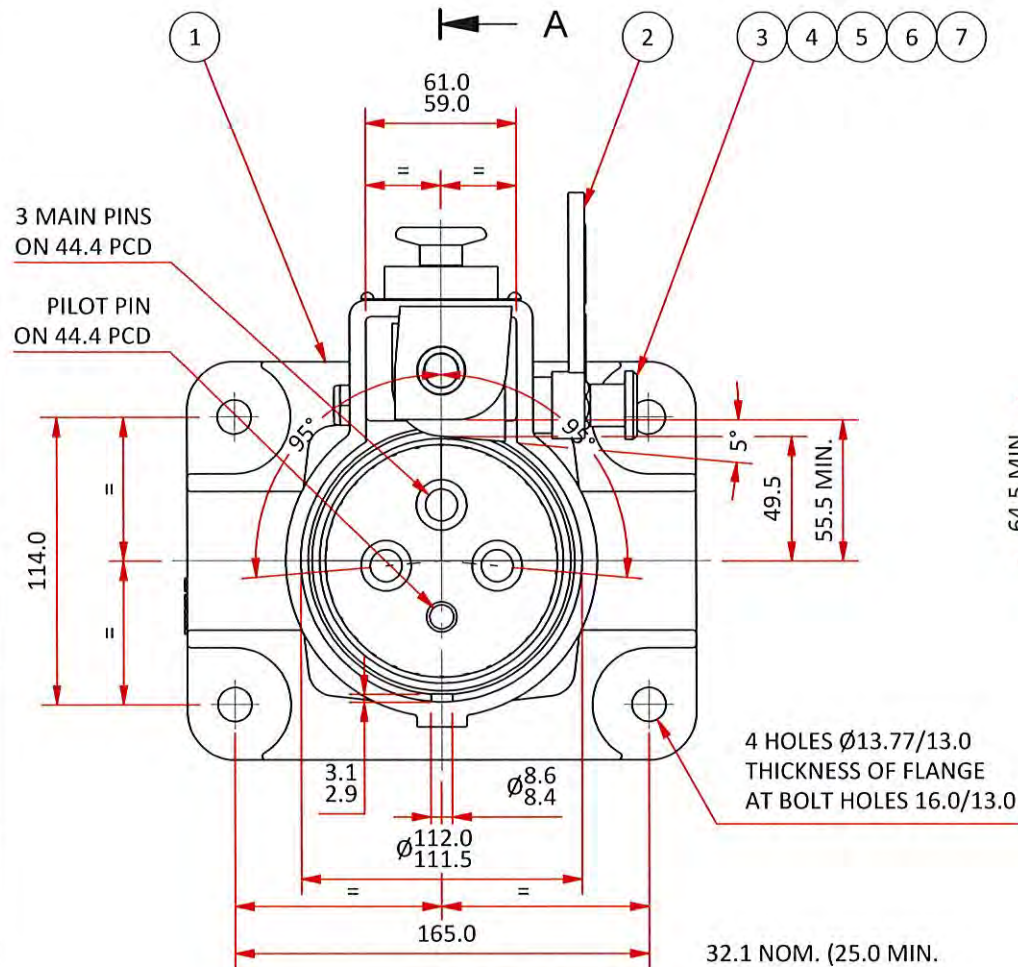
DO NOT SCALE DRAWING
DIMENSIONS IN MILLIMETRES

cmi Electrical Products
A division of CMI Operations Pty Ltd

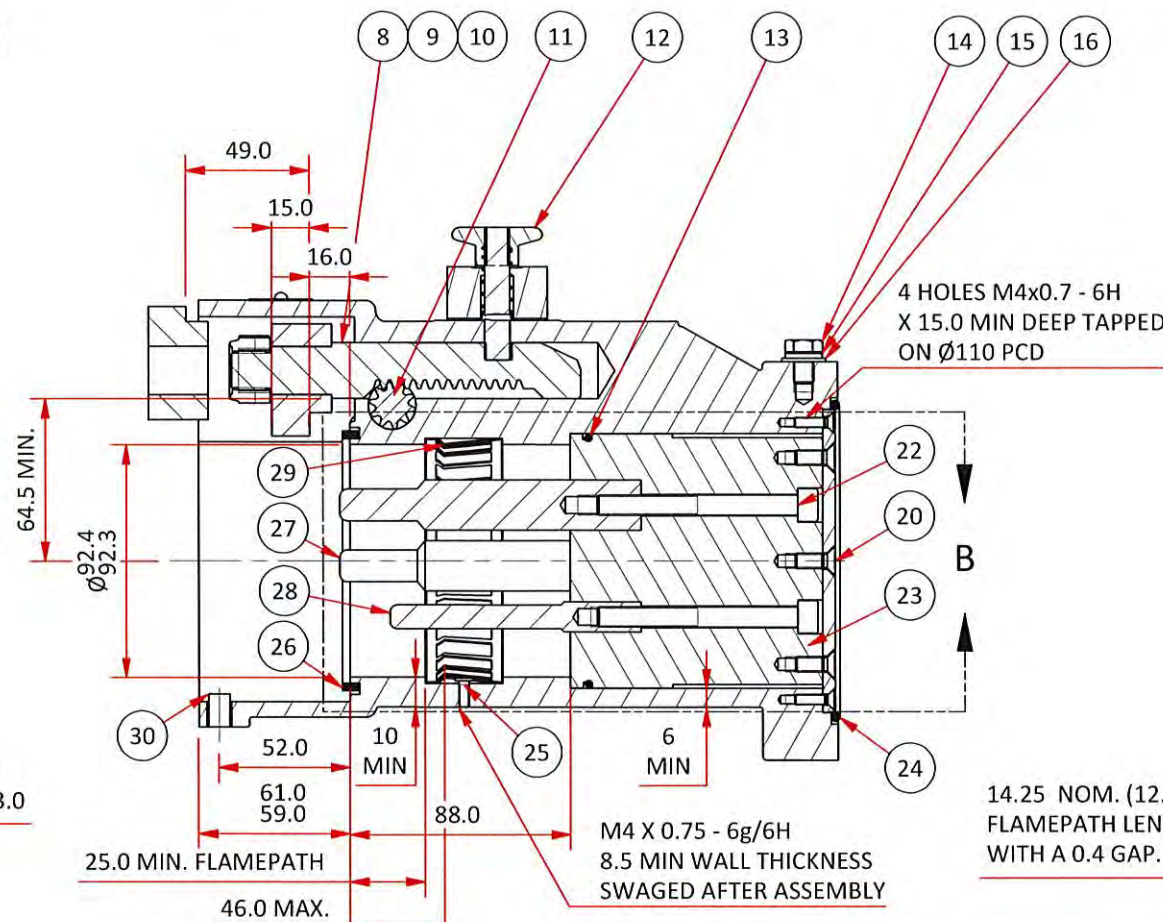
GENERAL TOLERANCE ±0.25
ANGULAR TOLERANCE ±0.5°
MATERIAL SEE TABLE
FINISH COLOUR CODE TO AS/NZS 1299

MINTO INDUSTRIAL PRODUCTS

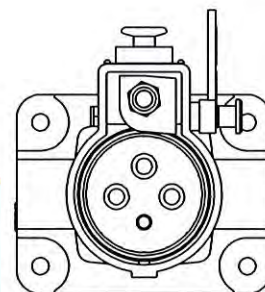
DESCRIPTION 150A 660/1100V Q/R RESTRAINED EARTHING RECEPTACLE
SCALE 1:2.5 DATE 29/11/2021
DRAWN ASB CHECKED A3
DRAWING No. F-881



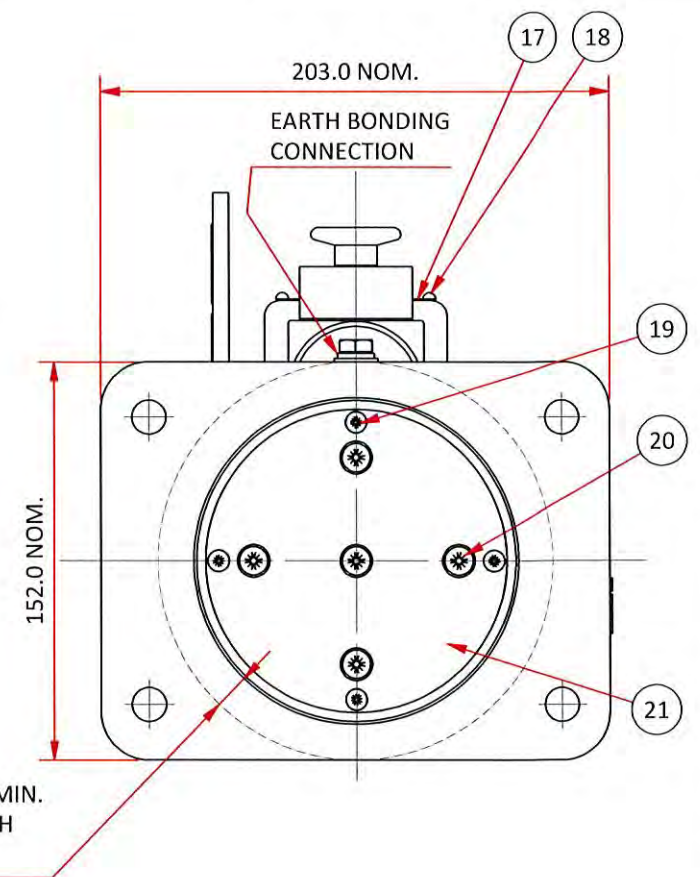
DETAIL VIEW B



SECTION VIEW A-A



CONFIGURATION



ITEM	QTY	PART NUMBER	DESCRIPTION	MATERIAL
30	1	3849	LOCATION SCREW	ST. STEEL
29	1	3028-1	SCRAPING EARTH CONTACT	PHOSPHOR BRONZE
28	1	4774-3E	300/425A PILOT PIN	ST. STEEL
27	3	4609E	300A 3.3KV MAIN PIN	ST. STEEL
26	1	4401-3	SEAL	NEOPRENE RUBBER
25	1	AH151016	M4 X 20 CH HD SCREW	BRASS
24	1	A019010	O'RING ID 120.24 X SECT 3.53	NITRILE
23	1	4602E	300/425A RECEPTACLE INTERIOR	FREE CUTTING BRASS C38500 OR ST. STEEL
22	4	AH115146	M8 X 80 SS SKT HD CAP SCREW	ST. STEEL
21	1	4612E	300/425A INTERIOR RETAINING PLATE	FREE CUTTING BRASS C38500 OR ST. STEEL
20	5	AH151028	M6 X 16 CSK PHILLIPS HD SCREW	ST. STEEL
19	4	AH151022	M4 X 16 CSK PHILLIPS HD SCREW	ST. STEEL
18	2	AH009788	3/16" X No.4 U-DRIVE SCREW	STEEL-ZINC PL.
17	1	AX004076	RATING PLATE	C26000 CARTRIDGE BRASS 70-30
16	1	AH009277	5/16" X 5/8" X 18 WASHER	STEEL-ZINC PL.
15	1	AH009363	5/16" SQ SECT SPRING WASHER	STEEL-ZINC PL.
14	1	AH113091	M8 X 10 HEX HD SET SCREW	STEEL-ZINC PL.
13	1	A019048	O'RING ID 94.92 X SECT 2.62	NITRILE
12	1	F-459 SERIES	Q/R LOCKING MECHANISM ASSEMBLY	FREE CUTTING BRASS / ST. STEEL
11	1	4287	150A JACKING RACK PINION	ST. STEEL
10	1	AH151013	M16 NYLOC NUT	STEEL-ZINC PL.
9	1	4262	Q/R PAWL	ST. STEEL
8	1	4254-2	150/300A JACKING RACK	ST. STEEL
7	1	AH009008	7/16" UNF NYLOC NUT	STEEL-ZINC PL.
6	1	AH009268	7/16" X 7/8" X 16 WASHER	STEEL-ZINC PL.
5	1	4288	Q/R PINION BUSH	FREE CUTTING BRASS
4	1	AH115093	M8 X 16 SKT HD CAP SCREW	STEEL-ZINC PL.
3	1	4308	Q/R HANDLE BUSH	BRASS-NICKEL PL.
2	1	4285	Q/R HANDLE	ST. STEEL
1	1	3343BQR	300/425A Q/R RECEPTACLE BODY CASTING	HIGH TENSILE BRASS - NOTE 7

Parts List

MARKING DETAILS

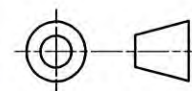
M.I.P
AG334BQRE
300A
3300V
IP66/68
Ex db I Mb
IECEx ExtC 21.0017X
ANZEx 22.4176X
TYPE A
S.O xxxxx-xx
WARNING
DO NOT SEPARATE WHEN ENERGIZED

NOTES:

1. MINIMUM WALL THICKNESS 3.0mm UNLESS OTHERWISE SPECIFIED ON THE DRAWING.
2. IN THE CASE OF BLIND HOLES FOR SCREWS, THE REMAINING THICKNESS OF MATERIAL UNDER THE HOLE IS A MINIMUM OF ONE THIRD OF THE SCREW DIAMETER OR 3MM, WHICHEVER IS GREATER.
3. FLANGE THICKNESS AT BOLT HOLE IS 13.0-16.0mm.
4. THE SPECIFICATIONS, DIMENSIONS AND RATINGS COMPLY WITH AS/NZS 1299 ELECTRICAL EQUIPMENT FOR MINES AND QUARRIES.
5. ALL MACHINED FLAMEPATH SURFACES AVERAGE Ra DOES NOT EXCEED 6.3 μ m (ISO 468).
6. MATERIAL HIGH TENSILE BRASS C86500 TO AS 1565-1996 WITH A MINIMUM TENSILE STRENGTH 450 MPa AND MINIMUM 10% ELONGATION.
7. MINIMUM PROPERTY CLASS FOR STAINLESS STEEL FASTENERS IS A*-70.
8. MINIMUM PROPERTY CLASS FOR MILD STEEL FASTENERS IS 4.6.
9. IP66/68 (2 METERS FOR 30 MINUTES).

REV	ZONE	DESCRIPTION	DATE	APPROVED
A		DRAWING CREATED	01/04/2022	

THIS DRAWING REMAINS THE PROPERTY OF CMI ELECTRICAL PRODUCTS AND MUST NOT BE LENT OR COPIED.



DO NOT SCALE DRAWING DIMENSIONS IN MILLIMETRES

cmi

Electrical Products

A division of CMI Operations Pty Ltd

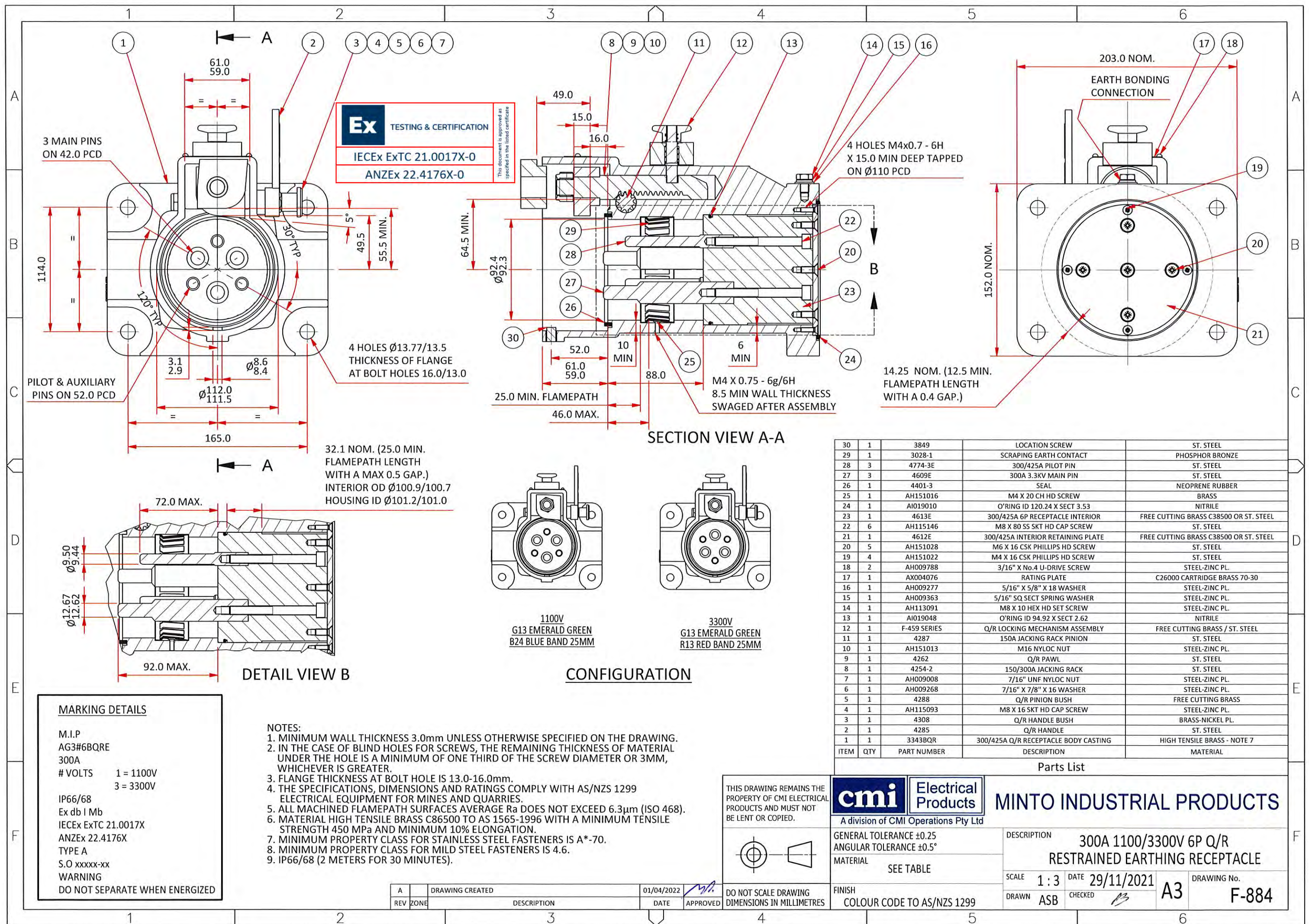
GENERAL TOLERANCE ± 0.25
ANGULAR TOLERANCE $\pm 0.5^\circ$
MATERIAL SEE TABLE

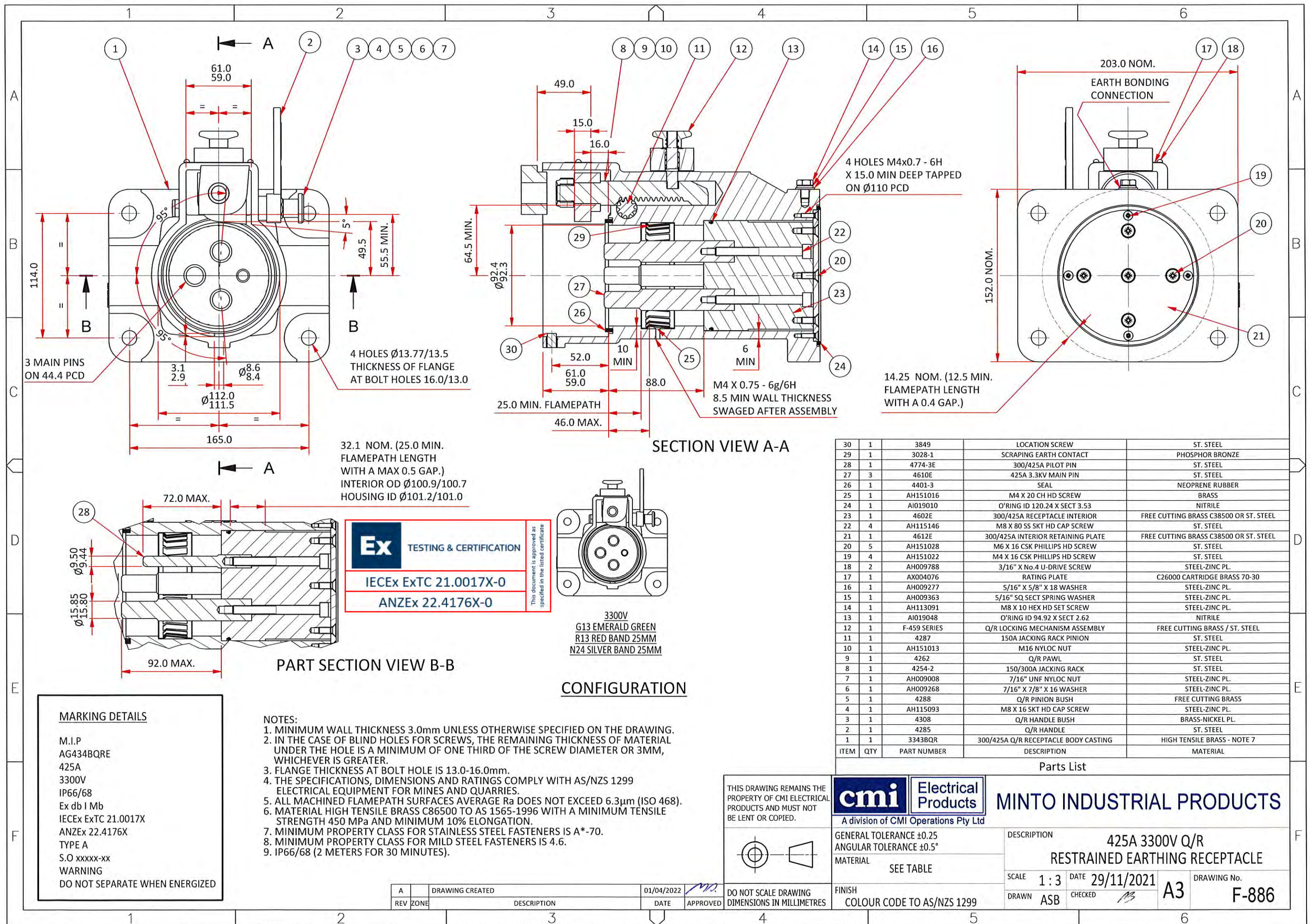
FINISH COLOUR CODE TO AS/NZS 1299

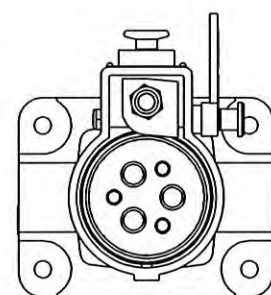
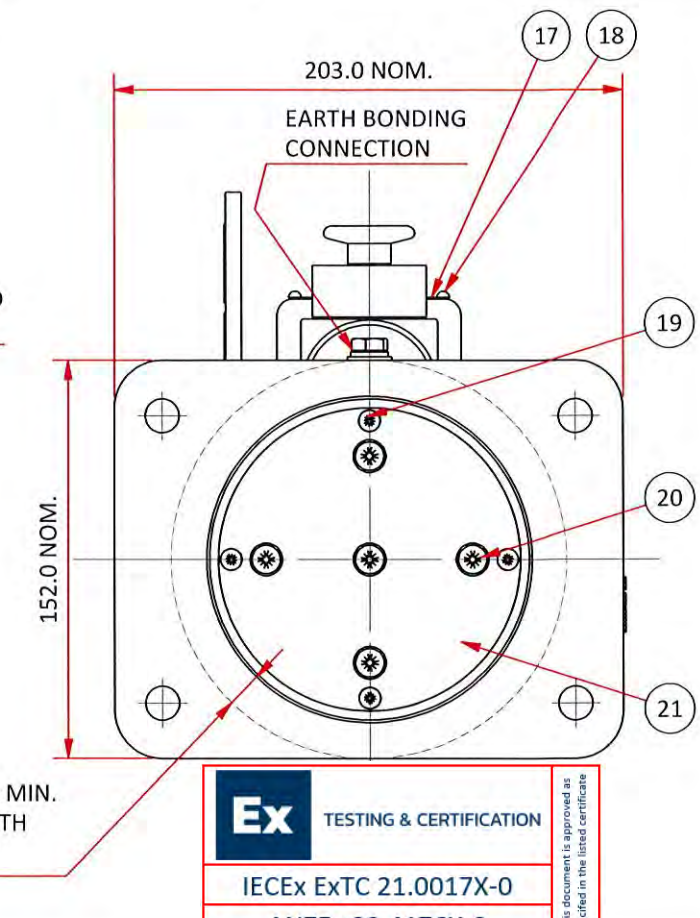
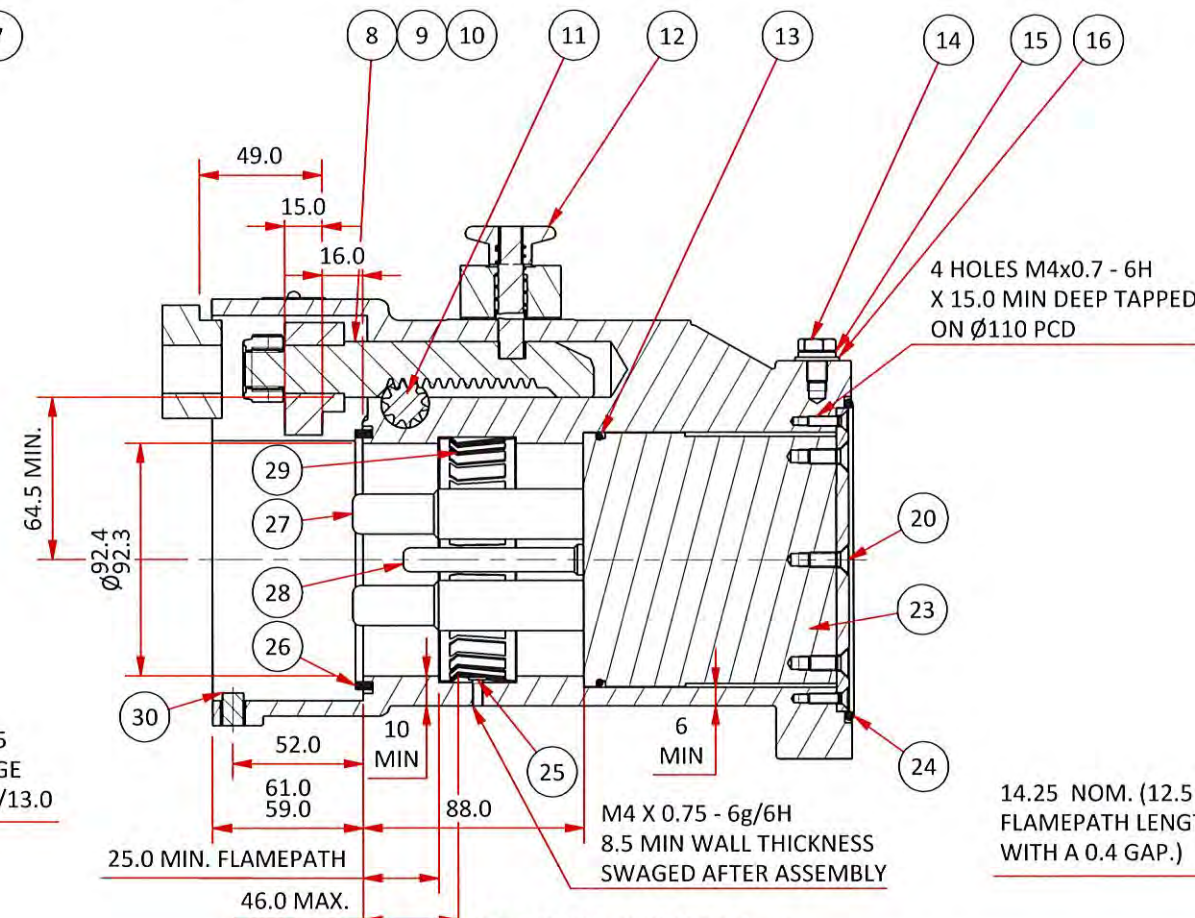
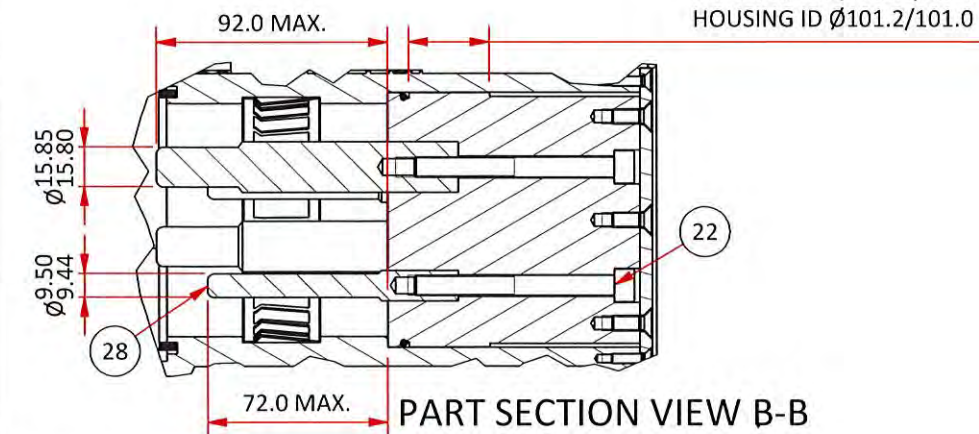
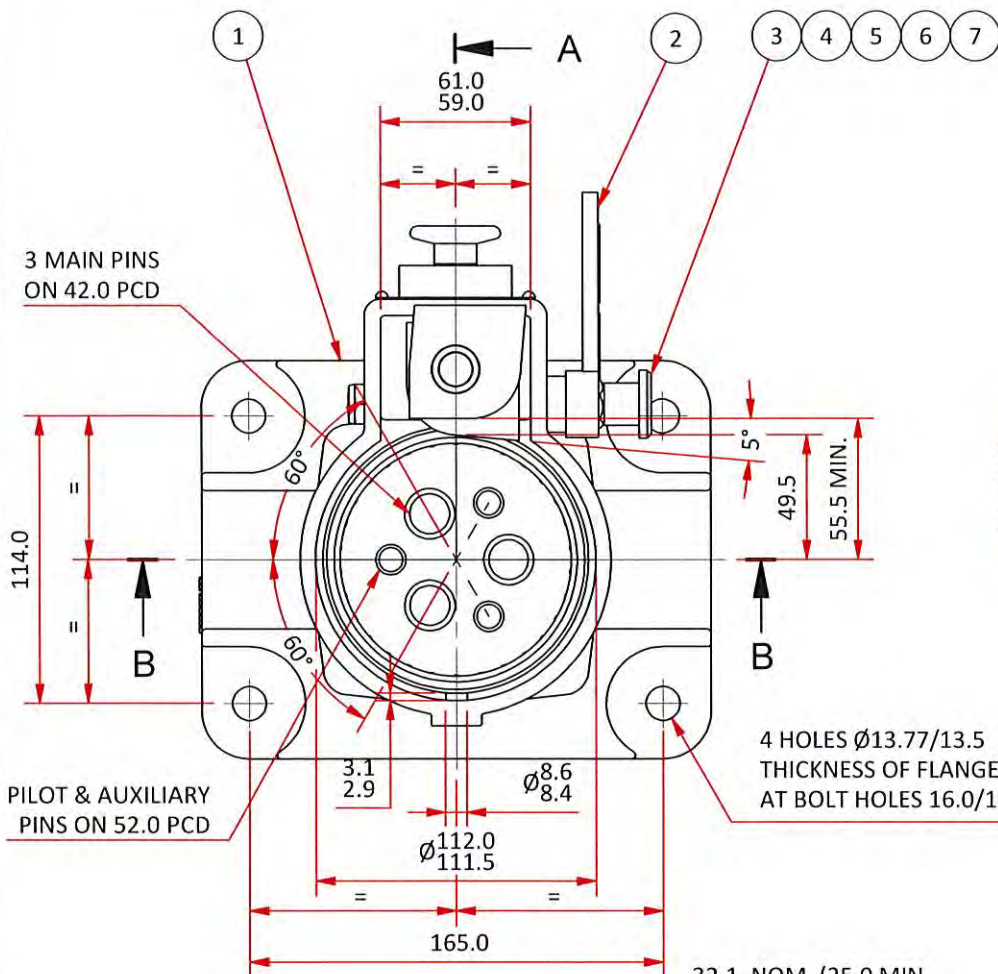
MINTO INDUSTRIAL PRODUCTS

DESCRIPTION 300A 3300V Q/R RESTRAINED EARTHING RECEPTACLE

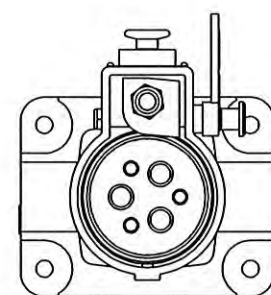
SCALE 1:3 DATE 29/11/2021 DRAWN ASB CHECKED A3 DRAWING No. F-883







1100V
G13 EMERALD GREEN
B24 BLUE BAND 25MM
N24 SILVER BAND 25MM



3300V
G13 EMERALD GREEN
R13 RED BAND 25MM
N24 SILVER BAND 25MM

CONFIGURATION

MARKING DETAILS

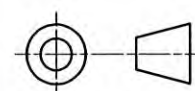
M.I.P
AG4#6BQRE
425A
VOLTS 1 = 1100V
3 = 3300V
IP66/68
Ex db I Mb
IECEx ExTC 21.0017X
ANZEx 22.4176X
TYPE A
S.O xxxxx-xx
WARNING
DO NOT SEPARATE WHEN ENERGIZED

NOTES:

1. MINIMUM WALL THICKNESS 3.0mm UNLESS OTHERWISE SPECIFIED ON THE DRAWING.
2. IN THE CASE OF BLIND HOLES FOR SCREWS, THE REMAINING THICKNESS OF MATERIAL UNDER THE HOLE IS A MINIMUM OF ONE THIRD OF THE SCREW DIAMETER OR 3MM, WHICHEVER IS GREATER.
3. FLANGE THICKNESS AT BOLT HOLE IS 13.0-16.0mm.
4. THE SPECIFICATIONS, DIMENSIONS AND RATINGS COMPLY WITH AS/NZS 1299 ELECTRICAL EQUIPMENT FOR MINES AND QUARRIES.
5. ALL MACHINED FLAMEPATH SURFACES AVERAGE R_a DOES NOT EXCEED $6.3\mu m$ (ISO 468).
6. MATERIAL HIGH TENSILE BRASS C86500 TO AS 1565-1996 WITH A MINIMUM TENSILE STRENGTH 450 MPa AND MINIMUM 10% ELONGATION.
7. MINIMUM PROPERTY CLASS FOR STAINLESS STEEL FASTENERS IS A*-70.
8. MINIMUM PROPERTY CLASS FOR MILD STEEL FASTENERS IS 4.6.
9. IP66/68 (2 METERS FOR 30 MINUTES).

REV	ZONE	DESCRIPTION	DATE	APPROVED
A		DRAWING CREATED	01/04/2022	

THIS DRAWING REMAINS THE PROPERTY OF CMI ELECTRICAL PRODUCTS AND MUST NOT BE LENT OR COPIED.



DO NOT SCALE DRAWING
DIMENSIONS IN MILLIMETRES

cmi Electrical Products
A division of CMI Operations Pty Ltd

GENERAL TOLERANCE ± 0.25
ANGULAR TOLERANCE $\pm 0.5^\circ$
MATERIAL SEE TABLE
FINISH COLOUR CODE TO AS/NZS 1299

MINTO INDUSTRIAL PRODUCTS

DESCRIPTION 425A 1100/3300V 6P Q/R
RESTRAINED EARTHING RECEPTACLE
SCALE 1:3 DATE 29/11/2021
DRAWN ASB CHECKED *ASB* A3 DRAWING No. F-887

ITEM	QTY	PART NUMBER	DESCRIPTION	MATERIAL
30	1	3849	LOCATION SCREW	ST. STEEL
29	1	3028-1	SCRAPING EARTH CONTACT	PHOSPHOR BRONZE
28	3	4774-3E	300/425A PILOT PIN	ST. STEEL
27	3	4610E	425A 3.3KV MAIN PIN	ST. STEEL
26	1	4401-3	SEAL	NEOPRENE RUBBER
25	1	AH151016	M4 X 20 CH HD SCREW	BRASS
24	1	A019010	O'RING ID 120.24 X SECT 3.53	NITRILE
23	1	4613E	300/425A 6P RECEPTACLE INTERIOR	FREE CUTTING BRASS C38500 OR ST. STEEL
22	6	AH115146	M8 X 80 SS SKT HD CAP SCREW	ST. STEEL
21	1	4612E	300/425A INTERIOR RETAINING PLATE	FREE CUTTING BRASS C38500 OR ST. STEEL
20	5	AH151028	M6 X 16 CSK PHILLIPS HD SCREW	ST. STEEL
19	4	AH151022	M4 X 16 CSK PHILLIPS HD SCREW	ST. STEEL
18	2	AH009788	3/16" X NO.4 U-DRIVE SCREW	STEEL-ZINC PL.
17	1	AX004076	RATING PLATE	C26000 CARTRIDGE BRASS 70-30
16	1	AH009277	5/16" X 5/8" X 18 WASHER	STEEL-ZINC PL.
15	1	AH009363	5/16" SQ SECT SPRING WASHER	STEEL-ZINC PL.
14	1	AH113091	M8 X 10 HEX HD SET SCREW	STEEL-ZINC PL.
13	1	A019048	O'RING ID 94.92 X SECT 2.62	NITRILE
12	1	F-459 SERIES	Q/R LOCKING MECHANISM ASSEMBLY	FREE CUTTING BRASS / ST. STEEL
11	1	4287	150A JACKING RACK PINION	ST. STEEL
10	1	AH151013	M16 NYLOC NUT	STEEL-ZINC PL.
9	1	4262	Q/R PAWL	ST. STEEL
8	1	4254-2	150/300A JACKING RACK	ST. STEEL
7	1	AH009008	7/16" UNF NYLOC NUT	STEEL-ZINC PL.
6	1	AH009268	7/16" X 7/8" X 16 WASHER	STEEL-ZINC PL.
5	1	4288	Q/R PINION BUSH	FREE CUTTING BRASS
4	1	AH115093	M8 X 16 SKT HD CAP SCREW	STEEL-ZINC PL.
3	1	4308	Q/R HANDLE BUSH	BRASS-NICKEL PL.
2	1	4285	Q/R HANDLE	ST. STEEL
1	1	3343BQR	300/425A Q/R RECEPTACLE BODY CASTING	HIGH TENSILE BRASS - NOTE 7

Parts List

Instructions for 60, 150 & 300/425A Earthing Receptacle

Catalogue Number	Description
AG614BE	60 AMP 1100 VOLT 4 PIN RESTRAINED EARTHING RECEPTACLE
AG664BE	60 AMP 660 VOLT 4 PIN RESTRAINED EARTHING RECEPTACLE
AG114BQRE	150 AMP 1100 VOLT 4 PIN RESTRAINED Q/R EARTHING RECEPTACLE
AG164BQRE	150 AMP 660 VOLT 4 PIN RESTRAINED Q/R EARTHING RECEPTACLE
AG314BQRE	300 AMP 1100 VOLT 4 PIN RESTRAINED Q/R EARTHING RECEPTACLE
AG316BQRE	300 AMP 1100 VOLT 6 PIN RESTRAINED Q/R EARTHING RECEPTACLE
AG334BQRE	300 AMP 3300 VOLT 4 PIN RESTRAINED Q/R EARTHING RECEPTACLE
AG336BQRE	300 AMP 3300 VOLT 6 PIN RESTRAINED Q/R EARTHING RECEPTACLE
AG364BQRE	300 AMP 660 VOLT 4 PIN RESTRAINED Q/R EARTHING RECEPTACLE
AG414BQRE	425 AMP 1100 VOLT 4 PIN RESTRAINED Q/R EARTHING RECEPTACLE
AG416BQRE	425 AMP 1100 VOLT 6 PIN RESTRAINED Q/R EARTHING RECEPTACLE
AG434BQRE	425 AMP 3300 VOLT 4 PIN RESTRAINED Q/R EARTHING RECEPTACLE
AG436BQRE	425 AMP 3300 VOLT 6 PIN RESTRAINED Q/R EARTHING RECEPTACLE
AG464BQRE	425 AMP 660 VOLT 4 PIN RESTRAINED Q/R EARTHING RECEPTACLE

• **Receptacle Installation**

- Ensure there is no visible sign of damage to the receptacle
- Ensure the mounting pad complies with the attached sketch
- The special fasteners used on the enclosures to mount the earthing receptacle to the flameproof enclosure shall be of minimum grade 4.6 (yield stress 240 MPa).
- Or A*-70 Stainless Steel (yield stress 450 MPa) or 4.6 Mild Steel (yield stress 240 MPa).

• **Assembly**

- Ensure pins and receptacle interior are clean and serviceable.
- Correct plug orientation.
- Insert plug using the receptacle operating mechanism.

• **Disassembly**

- To remove plug from receptacle, utilize the operating mechanism.
- Fit dust cover to plug and receptacle.

• **Certification Details:**

Certified to: IEC 60079-0:2011(Incorporating Corrigendum 1 & 2) IEC 60079-1:2014; AS/NZS 1299:2009 (incorporating amendment No.1)
Certificate of Conformity: IECEx ExTC 21.0017X and ANZEx 22.4176X
Type of Protection: Ex db I Mb
Type (AS/NZS 1299) Type A
Ingress Protection: IP66/68 (2 metres for 30 minutes)



This brochure is distributed with the understanding that the authors and editors are not responsible for the results of any actions taken on the basis of the information in this work, or any errors or omission. Further, Minto Industrial Products is not engaged in rendering professional services. Minto Industrial Products expressly disclaims all and any liability to any person in respect of anything and of the consequences of anything done or omitted to be done by any such person in reliance whether whole or partial of the contents of this publication. All rights reserved. No part of this work covered by copyright may be reproduced or copied in any form or by any means without the written permission of Minto Industrial Products.

Inst. Rest Earthing Receptacle Page 1 of 4

Rev A 20220308

• Specific Conditions of Use

- The flange flamepath used to assemble the receptacles to flameproof enclosures shall be of minimum width 12.5mm and maximum gap 0.4mm and a surface roughness R_a of 6.3 μ m or better. This flange is only classified as a flamepath when the earthing receptacle is mounted to a flameproof enclosure that has an existing cable entry hole through the wall to the interior of the enclosure.

• Maintenance

- Inspection shall include cleanliness and compliance with certification documentation.

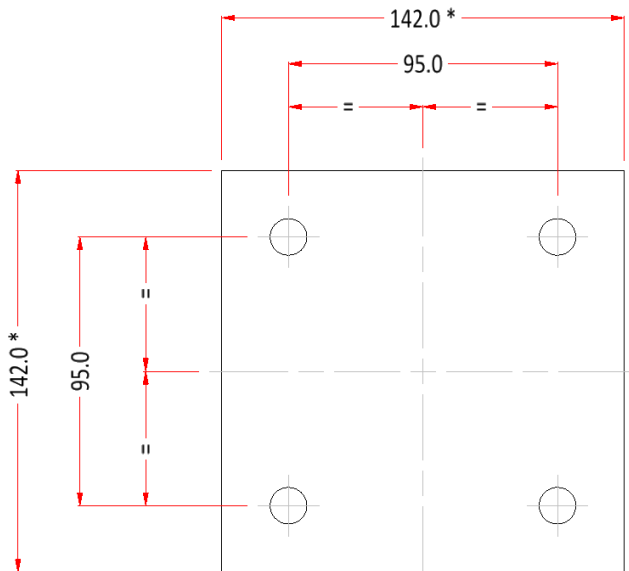
• Overhaul and Repair

- To be carried out by suitable workshop.
- It is recommended that the equipment is overhauled at intervals that do not exceed the requirements of AS/NZS2290.1

• Operating Temperature

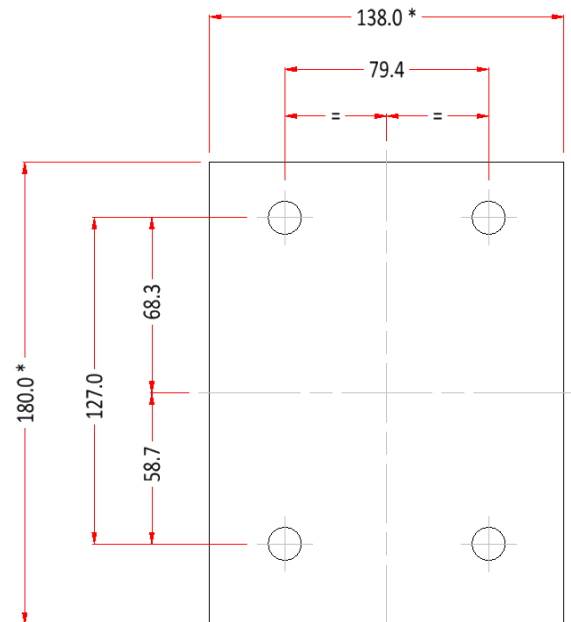
- Operating temperature range -20°C to +40°C and average temperature over 24 hours is not to exceed 35°C

60A Mounting Details



* Dimensions shown is the Enclosure Machining Area.
Untoleranced dimensions ± 0.25

150A Mounting Details



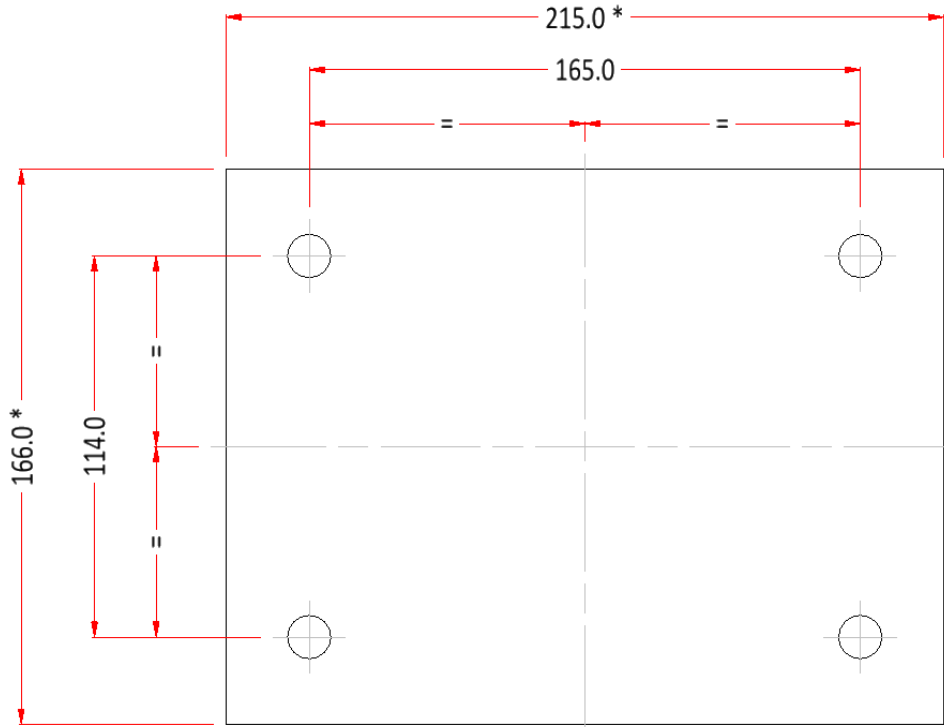
* Dimensions shown is the Enclosure Machining Area.
Untoleranced dimensions ± 0.25



This brochure is distributed with the understanding that the authors and editors are not responsible for the results of any actions taken on the basis of the information in this work, or any errors or omission. Further, Minto Industrial Products is not engaged in rendering professional services. Minto Industrial Products expressly disclaims all and any liability to any person in respect of anything and of the consequences of anything done or omitted to be done by any such person in reliance whether whole or partial of the whole or any part of the contents of this publication. All rights reserved. No part of this work covered by copyright may be reproduced or copied in any form or by any means without the written permission of Minto Industrial Products.

Inst. Rest Earthing Receptacle Page 3 of 4
Rev A 20220308

300/425A Mounting Details



* Dimensions shown is the Enclosure Machining Area.
Untoleranced dimensions ± 0.25

Ex	TESTING & CERTIFICATION
IECEx ExTC 21.0017X-0	
ANZEx 22.4176X-0	

This document is approved as specified in the listed certificate

This brochure is distributed with the understanding that the authors and editors are not responsible for the results of any actions taken on the basis of the information in this work, or any errors or omission. Further, Minto Industrial Products is not engaged in rendering professional services. Minto Industrial Products expressly disclaims all and any liability to any person in respect of anything and of the consequences of anything done or omitted to be done by any such person in reliance whether whole or partial of the whole or any part of the contents of this publication. All rights reserved. No part of this work covered by copyright may be reproduced or copied in any form or by any means without the written permission of Minto Industrial Products.

Inst. Rest Earthing Receptacle Page 4 of 4

Rev A 20220308