

Ex

TESTING & CERTIFICATION

IECEx ExTC 22.0037X-0

ANZEx 22.4181-0

This document is approved as specified in the listed certificate

MARKING DETAILS

M.I.P.
AG3#6BQR
300A
VOLTS 1=1100V
3=3300V

IP66/68
Ex db I Mb
IECEx ExTC 22.0037X
ANZEx 22.4181
TYPE A
S.O xxxxx-xx
WARNING
DO NOT SEPARATE WHEN ENERGIZED

47	3	F-853 SERIES	300/425A REST RECEPT PILOT PIN ASSY SPLIT INSULATOR	(COPPER) C14700 OR C11000 OR C10100 TO AS/NZS 1567-1997
43	3	4609	MAIN PIN	SILVER PL. TO AS 1565-2004 CuAg 08 / PTFE (COPPER) C14700 OR C11000 OR C10100 TO AS/NZS 1567-1997
42	3	AH151026	M4 X 25 SKT HD CAP SCREW	ST. STEEL (MIN. A-70)
41	1	3343BQR	BODY CASTING	HIGH TENSILE BRASS - NOTE 7 C86500 TO AS 1565-1996
40	1	4401-3	SEAL	NEOPRENE RUBBER
39	1	3849	LOCATION SCREW	ST. STEEL
38	3	A019017	O'RING ID 10.82 X SECT 1.78	NITRILE
37	1	3028-1	SCRAPING EARTH CONTACT	PHOSPHOR BRONZE
36B	1	AH151029	4mm CSK RIVET (OPTIONAL)	COPPER
36A	1	AH151016	M4 X 20 CH HD SCREW	BRASS
35	3	A019049	O'RING ID 21.95 X 1.78 SECT	NITRILE
34	1	A019048	O'RING ID 94.92 X SECT 2.62	NITRILE
33	3	4606 SERIES	MAIN THIMBLE	(COPPER) C14700 OR C11000 OR C10100 TO AS/NZS 1567-1997
32	3	4604	MAIN INSULATOR	SILVER PL. TO AS 1565-2004 CuAg 08 / PTFE
31	1	4613 SERIES	INTERIOR	FREE CUTTING BRASS C38500 TO AS/NZS 1567-1997
30	1	AV3	MOUNTING BRACKET (OPTIONAL)	STEEL MILD-ZINC PL.
29	1	A019010	O'RING ID 120.24 X SECT 3.53	NITRILE
28	1	CERTIFIED CMI GLAND	CERTIFIED SUREFIT GLANDS (OPTIONAL)	BRASS-NICKEL PL. OR ST. STEEL / HIGH TENSILE BRASS
27	1	4614	CERTIFIED NIP TO NIP GLANDS (OPTIONAL)	FREE CUTTING BRASS C38500 TO AS/NZS 1567-1997
26	1	AH151025	M6 X 12 SKT HD CAP SCREW	ST. STEEL (MIN. A-70)
25	4	AH151022	M4 X 16 CSK PHILLIPS HD SCREW	ST. STEEL (MIN. A-70)
24	3	AH151028	M6 X 16 CSK PHILLIPS HD SCREW	ST. STEEL (MIN. A-70)
23	3	4648 SERIES	EARTH THIMBLE	(COPPER) C14700 OR C11000 OR C10100 TO AS/NZS 1567-1997
22	1	AH009277	5/16" X 5/8" X 18 WASHER	STEEL-ZINC PL.
21	1	AH009363	5/16" SQ SECT SPRING WASHER	STEEL-ZINC PL.
20	1	AH113081	M8 X 10 HEX HD SET SCREW	STEEL-ZINC PL. (MIN. 4.6)
19	1	AX004076	EQUIPOTENTIAL EARTING SCREW	BRASS
18	2	AH009788	RATING PLATE	STEEL-ZINC PL.
17	1	F-4617 SERIES / F-3370	No.4 GAUGE X 3/16" U-DRIVE SCREW	HIGH TENSILE BRASS - NOTE 7 C86500 TO AS 1565-1996
15B	1	F-4616	THREADED GLAND ADAPTOR ASSEMBLY (OPTIONAL)	BRASS / ST. STEEL
15A	1	F-4634	SPIGOT GLAND ADAPTOR ASSEMBLY (OPTIONAL)	PTFE
11	1	F-459 SERIES	ACTUATOR BUNG ASSEMBLY (OPTIONAL)	BRASS-NICKEL PL. / ST. STEEL
10	1	4254-4	Q/R LOCKING MECHANISM	ST. STEEL
9	1	4267	JACKING RACK	ST. STEEL
8	1	4267	JACKING RACK PINION	ST. STEEL
7	2	4262	Q/R PANK	ST. STEEL
6	1	AH151013	M16 NYLOC NUT	STEEL-ZINC PL. (MIN. 4.6)
5	1	4308	Q/R HANDLE BUSH	BRASS-NICKEL PL.
4	1	4285	Q/R HANDLE	ST. STEEL
3	1	AH115093	M8 X 16 SKT HD CAP SCREW	STEEL-ZINC PL. (MIN. 4.6)
2	1	4288	Q/R PINION BUSH	FREE CUTTING BRASS C38500 TO AS/NZS 1567-1997
1	1	AH009268	7/16" X 7/8" X 16 WASHER	STEEL-ZINC PL.
ITEM	QTY	PART NUMBER	DESCRIPTION	MATERIAL

Parts List

cmi

Electrical Products

A division of CMI Operations Pty Ltd

GENERAL TOLERANCE ±0.5 UNLESS OTHERWISE SPECIFIED

MATERIAL SEE TABLE

FINISH COLOUR CODING AS PER AS 2700

DESCRIPTION 300A 1100/3300V 6P Q/R RESTRAINED RECEPTACLE

SCALE NTS DATE 22/11/22

DRAWN EL CHECKED APPROVED

DRAWING No. F-934

- NOTES
1. MINIMUM WALL THICKNESS 3.0mm UNLESS OTHERWISE SPECIFIED ON THE DRAWING.

2. IN CASE OF BLIND HOLES FOR SCREWS, THE REMAINING THICKNESS OF MATERIAL UNDER THE HOLE IS A MINIMUM OF ONE THIRD OF THE DIAMETER OR 3MM WHICHEVER IS GREATER.

3. THE SPECIFICATIONS, DIMENSIONS AND RATINGS COMPLY WITH AS/NZS 1299 ELECTRICAL EQUIPMENT FOR MINES AND QUARRIES.

4. SPECIAL FASTENERS COMPLY WITH ISO 262 WITH A TOLERANCE FIT 6g/6H AND THREAD ENGAGEMENT IS ≥ THE MAJOR DIAMETER AND THE CLEARANCE HOLE IS NOT > H13 (ISO 286-2).

5. ALL MACHINED FLAMEPATH SURFACES AVERAGE R_a DOES NOT EXCEED 6.3µm (ISO 468).

6. MATERIAL HIGH TENSILE BRASS C86500 TO AS 1565-1996 WITH A MINIMUM TENSILE STRENGTH 450 MPa AND MINIMUM 10% ELONGATION.

7. UTILUX CRIMP DIE'S TO BE USED FOR CONNECTION'S BETWEEN THIMBLES AND CABLES AS PER AS/NZS 4325 (IEC 1238) OR SOLDER.

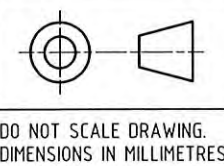
8. FOR F-4617 SERIES (THREADED GLAND ADAPTOR) USE M12x1.75x60mm SCREW & M12x1.75 NUT.

9. FOR F-3370 SERIES (SPIGOT GLAND ADAPTOR) USE M12x1.75x50mm SCREW.

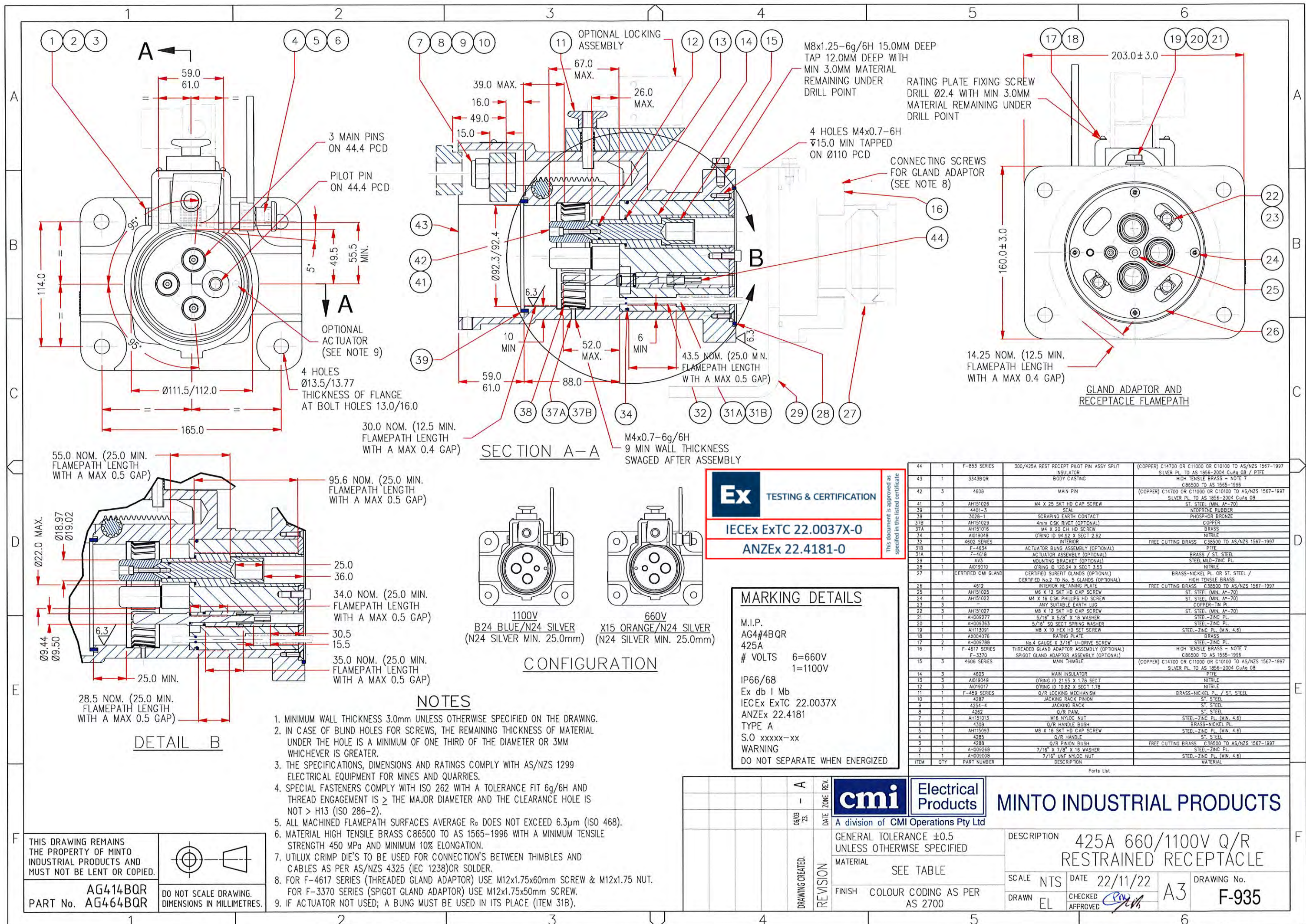
10. IF ACTUATOR NOT USED; A BUNG MUST BE USED IN ITS PLACE (ITEM 15A).

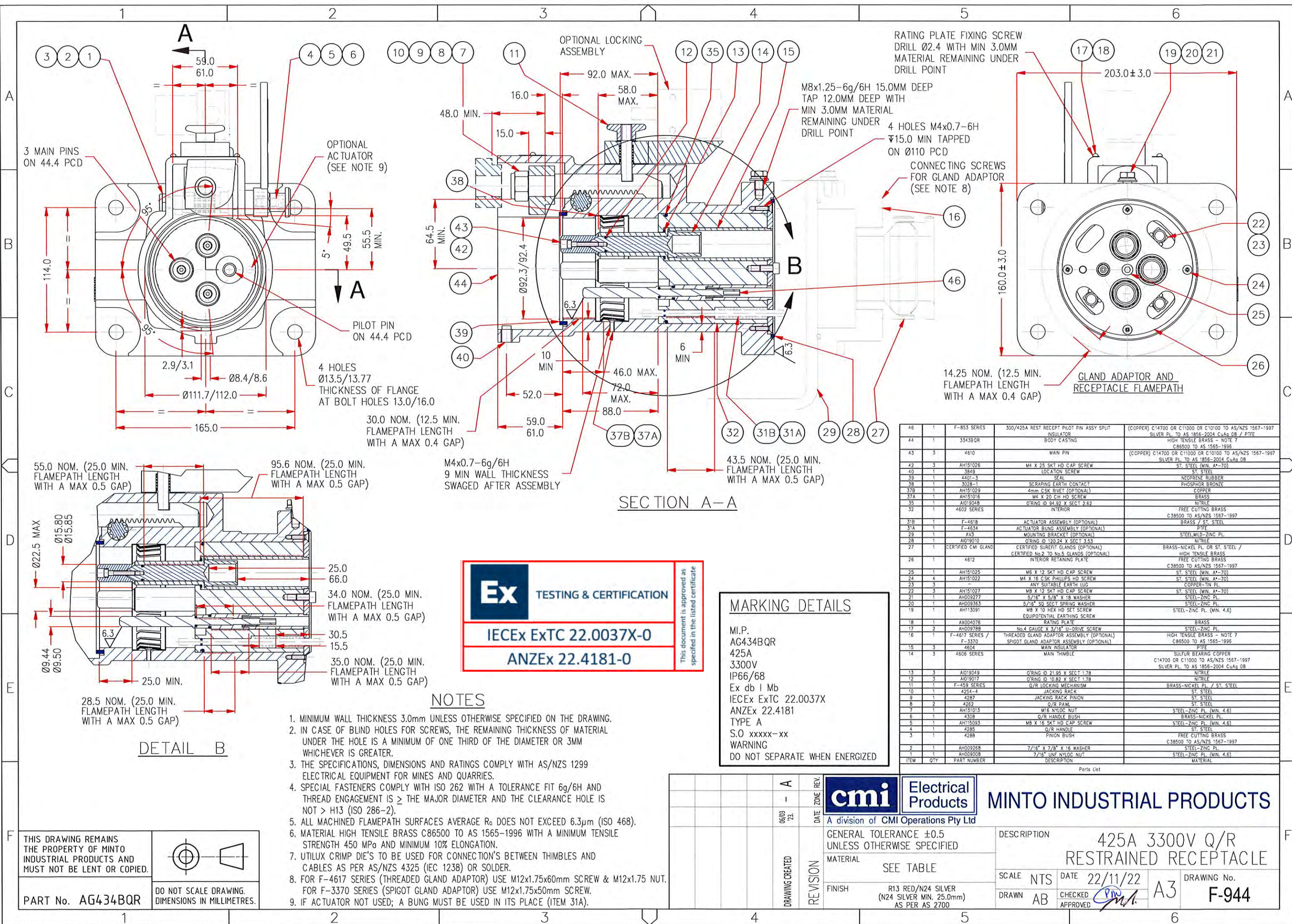
THIS DRAWING REMAINS THE PROPERTY OF MINTO INDUSTRIAL PRODUCTS AND MUST NOT BE LENT OR COPIED.

AG316BQR
PART No. AG336BQR



DO NOT SCALE DRAWING. DIMENSIONS IN MILLIMETRES.





MARKING DETAILS

M.I.P.
AG434BQR
425A
3300V
IP66/68
Ex db I Mb
IECEx ExTC 22.0037X
ANZEx 22.4181
TYPE A
S.O xxxxx-xx
WARNING
DO NOT SEPARATE WHEN ENERGIZED

NOTES

1. MINIMUM WALL THICKNESS 3.0mm UNLESS OTHERWISE SPECIFIED ON THE DRAWING.
2. IN CASE OF BLIND HOLES FOR SCREWS, THE REMAINING THICKNESS OF MATERIAL UNDER THE HOLE IS A MINIMUM OF ONE THIRD OF THE DIAMETER OR 3MM WHICHEVER IS GREATER.
3. THE SPECIFICATIONS, DIMENSIONS AND RATINGS COMPLY WITH AS/NZS 1299 ELECTRICAL EQUIPMENT FOR MINES AND QUARRIES.
4. SPECIAL FASTENERS COMPLY WITH ISO 262 WITH A TOLERANCE FIT 6g/6H AND THREAD ENGAGEMENT IS \geq THE MAJOR DIAMETER AND THE CLEARANCE HOLE IS NOT $>$ H13 (ISO 286-2).
5. ALL MACHINED FLAMEPATH SURFACES AVERAGE R_a DOES NOT EXCEED $6.3\mu m$ (ISO 468).
6. MATERIAL HIGH TENSILE BRASS C86500 TO AS 1565-1996 WITH A MINIMUM TENSILE STRENGTH 450 MPa AND MINIMUM 10% ELONGATION.
7. UTILUX CRIMP DIE'S TO BE USED FOR CONNECTION'S BETWEEN THIMBLES AND CABLES AS PER AS/NZS 4325 (IEC 1238) OR SOLDER.
8. FOR F-4617 SERIES (THREADED GLAND ADAPTOR) USE M12x1.75x60mm SCREW & M12x1.75 NUT. FOR F-3370 SERIES (SPIGOT GLAND ADAPTOR) USE M12x1.75x50mm SCREW.
9. IF ACTUATOR NOT USED; A BUNG MUST BE USED IN ITS PLACE (ITEM 31A).

ITEM	QTY	PART NUMBER	DESCRIPTION	MATERIAL
46	1	F-853 SERIES	300/425A REST RECEPT PILOT PIN ASSY SPLIT INSULATOR	(COPPER) C14700 OR C11000 OR C10100 TO AS/NZS 1567-1997
44	1	3343BQR	BODY CASTING	SILVER PL. TO AS 1856-2004 CuAg 08 / PTFE
43	3	4610	MAIN PIN	HIGH TENSILE BRASS - NOTE 7 C86500 TO AS 1565-1996
42	3	AH151026	M4 X 12 SKT HD CAP SCREW	(COPPER) C14700 OR C11000 OR C10100 TO AS/NZS 1567-1997
40	1	3849	LOCATION SCREW	SILVER PL. TO AS 1856-2004 CuAg 08
39	1	4201-3	SEAL	ST. STEEL (MIN. A*-70)
38	1	3028-1	SCRAPING EARTH CONTACT	NEOPRENE RUBBER
37B	1	AH151029	4mm CSK RIVET (OPTIONAL)	PHOSPHOR BRONZE
37A	1	AH151016	M4 X 20 CH HD SCREW	COPPER
35	1	A1019048	O'RING ID 94.92 X SECT 2.62	BRASS
32	1	4602 SERIES	INTERIOR	NITRILE
31B	1	F-4618	ACTUATOR ASSEMBLY (OPTIONAL)	FREE CUTTING BRASS C38500 TO AS/NZS 1567-1997
31A	1	F-4634	ACTUATOR BUNG ASSEMBLY (OPTIONAL)	BRASS / ST. STEEL
29	1	AV3	MOUNTING BRACKET (OPTIONAL)	PIPE
28	1	A1019010	O'RING ID 120.24 X SECT 3.53	STEEL MILD-ZINC PL.
27	1	CERTIFIED CMI GLAND	CERTIFIED SUREFIT GLANDS (OPTIONAL)	NITRILE
26	1	4612	CERTIFIED No.2 TO No.5 GLANDS (OPTIONAL)	BRASS-NICKEL PL. OR ST. STEEL / HIGH TENSILE BRASS
25	1	AH151025	M6 X 12 SKT HD CAP SCREW	FREE CUTTING BRASS C38500 TO AS/NZS 1567-1997
24	4	AH151022	M4 X 16 CSK PHILLIPS HD SCREW	ST. STEEL (MIN. A*-70)
23	3	-	ANY SUITABLE EARTH LUG	ST. STEEL (MIN. A*-70)
22	3	AH151027	M8 X 12 SKT HD CAP SCREW	COPPER-TIN PL.
21	1	AH009277	5/16" X 5/8" X 18 WASHER	ST. STEEL (MIN. A*-70)
20	1	AH009363	5/16" SQ SECT SPRING WASHER	ST. STEEL (MIN. A*-70)
19	1	AH113091	M8 X 10 HEX HD SET SCREW	STEEL-ZINC PL.
18	1	AX004076	EQUIPOTENTIAL EARTHING SCREW	STEEL-ZINC PL. (MIN. 4.6)
17	2	AH009788	RATING PLATE	BRASS
16	1	F-4617 SERIES / F-3370	No.4 GAUGE X 3/16" U-DRIVE SCREW THREADED GLAND ADAPTOR ASSEMBLY (OPTIONAL) SPIGOT GLAND ADAPTOR ASSEMBLY (OPTIONAL)	STEEL-ZINC PL. HIGH TENSILE BRASS - NOTE 7 C86500 TO AS 1565-1996
15	3	4604	MAIN INSULATOR	PIPE
14	3	4606 SERIES	MAIN THIMBLE	SULFUR BEARING COPPER C14700 OR C11000 TO AS/NZS 1567-1997 SILVER PL. TO AS 1856-2004 CuAg 08
13	3	A1019049	O'RING ID 21.95 X SECT 1.78	NITRILE
12	3	A1019017	O'RING ID 10.82 X SECT 1.78	NITRILE
11	1	F-459 SERIES	Q/R LOCKING MECHANISM	BRASS-NICKEL PL. / ST. STEEL
10	1	4254-4	JACKING RACK	ST. STEEL
9	1	4287	JACKING RACK PINION	ST. STEEL
8	2	4262	Q/R PAWL	ST. STEEL
7	1	AH151013	M16 NYLOC NUT	STEEL-ZINC PL. (MIN. 4.6)
6	1	4308	Q/R HANDLE BUSH	BRASS-NICKEL PL.
5	1	AH151093	M8 X 16 SKT HD CAP SCREW	STEEL-ZINC PL. (MIN. 4.6)
4	1	4285	Q/R HANDLE	ST. STEEL
3	1	4288	PINION BUSH	FREE CUTTING BRASS C38500 TO AS/NZS 1567-1997
2	1	AH009268	7/16" X 7/8" X 16 WASHER	STEEL-ZINC PL.
1	1	AH009008	7/16" UNF NYLOC NUT	STEEL-ZINC PL. (MIN. 4.6)

THIS DRAWING REMAINS THE PROPERTY OF MINTO INDUSTRIAL PRODUCTS AND MUST NOT BE LENT OR COPIED.

PART No. AG434BQR

DO NOT SCALE DRAWING. DIMENSIONS IN MILLIMETRES.

Electrical Products
A division of CMI Operations Pty Ltd

MINTO INDUSTRIAL PRODUCTS

425A 3300V Q/R RESTRAINED RECEPTACLE

F-944

GENERAL TOLERANCE ± 0.5 UNLESS OTHERWISE SPECIFIED

MATERIAL SEE TABLE

FINISH R13 RED/N24 SILVER (N24 SILVER MIN. 25.0mm) AS PER AS 2700

SCALE NTS

DATE 22/11/22

DRAWN AB

CHECKED

APPROVED

DRAWING No.

300/425A PLUGS

F-3962 RANGE - MAIN PHASE THIMBLE 300/425A 4 PIN 3300V SOLID INTERIOR PRODUCTS 300/425A 6 PIN 1100/3300V RUBBER INTERIOR PRODUCTS			
PART No.	I.D.	UTILUX DIE No.	INSERTION DEPTH
F-3962-1	10.0	38-115 Cu	25 MIN
F-3962-2	11.0	38-115 Cu	25 MIN
F-3962-3	13.5	38-142 Cu	25 MIN
F-3962-4	14.5	38-165 Cu	25 MIN
F-3962-5	16.6	38-165 Cu	25 MIN
F-3962-6	18.0	38-183 Cu	25 MIN
F-3962-7	20.7	SOLDER ONLY	25 MIN

F-3838 RANGE - MAIN PHASE THIMBLE 300A 4 PIN 660/1100V SOLID INTERIOR PRODUCTS			
PART No.	I.D.	CRIMP DIE No.	INSERTION DEPTH
F-3838-1	5.5	38-57 Cu	25 MIN
F-3838-2	6.2	38-74 Cu	25 MIN
F-3838-3	8.0	38-92 Cu	25 MIN
F-3838-4	10.0	38-115 Cu	25 MIN
F-3838-5	11.0	38-115 Cu	25 MIN
F-3838-6	13.5	38-142 Cu	25 MIN
F-3838-7	14.5	38-165 Cu	25 MIN
F-3838-8	16.6	38-165 Cu	25 MIN
F-3838-9	18.0	38-183 Cu	25 MIN
F-3838-10	20.7	SOLDER ONLY	25 MIN

F-3347 RANGE - MAIN PHASE THIMBLE 300/425A 4 PIN 660/1100V RUBBER INTERIOR PRODUCTS			
PART No.	I.D.	CRIMP DIE No.	INSERTION DEPTH
F-3347-000	6.2	38-74 Cu	25 MIN
F-3347-00	8.0	38-92 Cu	25 MIN
F-3347-0	10.0	38-115 Cu	25 MIN
F-3347-1	11.0	38-115 Cu	25 MIN
F-3347-2	13.5	38-142 Cu	25 MIN
F-3347-3	14.5	38-165 Cu	25 MIN
F-3347-4	16.6	38-165 Cu	25 MIN
F-3347-5	18.0	38-183 Cu	25 MIN
F-3347-6	20.7	SOLDER ONLY	25 MIN

F-4789 RANGE - MAIN PHASE THIMBLE 300/425A 4 & 6 PIN 660/1100/3300V SS INTERIOR			
PART No.	I.D.	UTILUX DIE No.	INSERTION DEPTH
F-4789-25	8.0	38-92 Cu	25 MIN
F-4789-35	10.0	38-115 Cu	25 MIN
F-4789-50	11.0	38-115 Cu	25 MIN
F-4789-70	13.5	38-142Cu	25 MIN
F-4789-95	14.5	38-165 Cu	25 MIN
F-4789-120	16.6	38-165 Cu	25 MIN
F-4789-150	18.5	38-200 Cu	25 MIN
F-4789-185	20.5	38-200Cu	25 MIN

PILOT THIMBLE			
PART No.	ID	CRIMP DIE No.	INSERTION DEPTH
F-3589-1	3	SOLDER	10 MIN
F-3589-1W	3	SOLDER	10 MIN
F-3984	12.7	SOLDER	10 MIN

F-4791 RANGE - PILOT SOCKET/THIMBLE 300/425A 4 & 6 PIN 660/1100/3300V SS INTERIOR			
PART No.	ID	CRIMP DIE No.	INSERTION DEPTH
F-4791	3.0	38-44 CU	15

PLUG DRAWING REFERENCE		
DWG	MAIN	PILOT
F-911	F-3347	F-3589-1
F-914	F-3962	F-3984
F-916	F-3838	F-3984
F-920	F-3347	F-3589-1
F-929	F-3962	F-3589-1
F-941	F-3962	F-3589-1
F-945	F-3962	F-3984
F-951	F-4789	F-4791
F-952	F-4789	F-4791
F-953	F-4789	F-4791
F-954	F-4789	F-4791
F-955	F-4789	F-4791
F-956	F-4789	F-4791

300/425A RECEPTACLES

F-4606 RANGE - MAIN PHASE THIMBLE 300/425A 4/6 PIN 660/1100/3300V PRODUCTS			
PART No.	I.D.	UTILUX DIE No.	INSERTION DEPTH
F-4606-1	8.4	38-92 Cu	25 MIN
F-4606-2	9.5	38-104 Cu	25 MIN
F-4606-3	11.2	38-115 Cu	25 MIN
F-4606-4	13.4	38-142 Cu	25 MIN
F-4606-5	15.5	38-165 Cu	25 MIN
F-4606-6	16.3	38-183 Cu	25 MIN
F-4606-7	18.4	38-200 Cu	25 MIN
F-4606-8	21.0	SOLDER ONLY	25 MIN

F-853 RANGE - PILOT THIMBLE 300/425A 4/6 PIN 660/1100/3300V PRODUCTS			
PART No.	ID	UTILUX CRIMP DIE	INSERTION DEPTH
F-853-1	3.0	38-44 CU	15 MIN
F-853-2	3.0	38-44 CU	15 MIN
F-853-3	3.0	38-44 CU	15 MIN



RECEPTACLE DRAWING REFERENCE		
DWG	MAIN	PILOT
F-915	F-4606	F-853-3
F-921	F-4606	F-853-2
F-926	F-4606	F-853-1
F-927	F-4606	F-853-3
F-932	F-4606	F-853-1
F-933	F-4606	F-853-3
F-934	F-4606	F-853-3
F-935	F-4606	F-853-2
F-940	F-4606	F-853-3
F-944	F-4606	F-853-3

NOTE:
1. MATERIAL:
(COPPER) C14700 OR C11000 OR C10100 TO AS/NZS 1567-1997
SILVER PLATED TO AS 1856-2004 CuAg 08 (IF APPLICABLE)

A	DRAWING CREATED.	07/02/2023	APPROVED
REV	ZONE	DESCRIPTION	DATE

THIS DRAWING REMAINS THE PROPERTY OF CMI ELECTRICAL PRODUCTS AND MUST NOT BE LENT OR COPIED.

A division of CMI Operations Pty Ltd

GENERAL TOLERANCE ± 0.25
ANGULAR TOLERANCE $\pm 0.5^\circ$
MATERIAL

FINISH

DESCRIPTION
**MAIN PHASE/PILOT THIMBLES
RESTRAINED PRODUCT RANGE**

SCALE
EL

DATE
22/11/2022

CHECKED

DRAWING No.
F-946

Instructions for 300/425 AMP 660/1100/3300 VOLT Restrained Range

TRP2

Catalogue Number	Description
AF3#4&@*	300A 660/1100V Restrained Plug
AF3#6&@*	300A 1100/3300V 6P Restrained Plug
AF334%@*	300A 3300V Restrained Plug
AF4#4&@*	425A 660/1100V Restrained Plug
AF4#6%@*	425A 1100/3300V 6P Restrained Plug
AF434%@*	425A 3300V Restrained Plug.
AG3#4B	300A 660/1100/3300V Restrained Receptacle
AG3#4BQR	300A 660/1100/3300V Q/R Restrained Receptacle
AG3#6B	300A 1100/3300V 6P Restrained Receptacle
AG3#6BQR	300A 1100/3300V Q/R 6P Restrained Receptacle
AG334B	300A 3300V Restrained Receptacle
AG334BQR	300A 3300V Q/R Restrained Receptacle
AG4#4B	425A 660/1100V Restrained Receptacle
AG4#4BQR	425A 660/1100V Q/R Restrained Receptacle
AG4#6BQR	425A 1100/3300V Q/R 6P Restrained Receptacle
AG434BQR	425A 3300V Q/R Restrained Receptacle
AH3#4B	300A 660/1100V Restrained Back to Back Receptacle
AH3#4BQR	300A 660/1100V Q/R Restrained Back to Back Receptacle
AH3#6B	300A 1100/3300V 6P Restrained Back to Back Receptacle
AH3#6BQR	300A 1100/3300V Q/R 6P Restrained Back to Back Receptacle
AH334B	300A 3300V Restrained Back to Back Receptacle
AH334BQR	300A 3300V Q/R Restrained Back to Back Receptacle
AH4#4B	425A 660/1100V Restrained Back to Back Receptacle
AH4#4BQR	425A 660/1100V Q/R Restrained Back to Back Receptacle
AH4#6BQR	425A 1100/3300V Q/R 6P Restrained Back to Back Receptacle
AH434BQR	425A 3300V Q/R Restrained Back to Back Receptacle
AR3#1R@	300A 660/1100V Restrained Dummy Plug
AR3#6R@	300A 1100V/3300 6P Restrained Dummy Plug
AR331S@	300A 3300V Restrained Dummy Plug
AR4#1R@	425A 660/1100V Restrained Dummy Plug
AR4#6R@	425A 1100V/3300 6P Restrained Dummy Plug
AR431S@	425A 3300V Restrained Dummy Plug

Note:

Marking:

- # Volts: 6=660V, 1=1100V, 3=3300V
- % Interior: S = Solid DMC, T = Teflon/Stainless
- & Interior: R = Rubber, T = Teflon/Stainless
- @ Nose Cone: S=ST. Steel, Blank=Bronze.
- * Gland: 3=Small, 4=large.

This brochure is distributed with the understanding that the authors and editors are not responsible for the results of any actions taken on the basis of the information in this work, or any errors or omission. Further, Minto Industrial Products is not engaged in rendering professional services. Minto Industrial Products expressly disclaims all and any liability to any person in respect of anything and of the consequences of anything done or omitted to be done by any such person in reliance whether whole or partial of the whole or any part of the contents of this publication. All rights reserved. No part of this work covered by copyright may be reproduced or copied in any form or by any means without the written permission of Minto Industrial Products.

TRP-2 300/425A Restrained Termination & Maintenance Instruction Page 1 of 4

Rev J 20230331



Installation

- Confirm components suitable for application e.g. thimbles and grommets suitable for the conductors and cable.
- Plug fitting cable preparation.
 1. Slide the gland cap, grommet and plug body along the cable.
 2. Prepare the cable to the dimensions given in the strip back table.
 3. Crimp or solder the thimbles to the phase, pilot and earth cores.
- **Plug fitting**
 4. Fit the conductors to the appropriate location securing in place with screw through socket where appropriate.
 5. Assemble the plug, ensuring the interior rotation conforms to AS/NZS1299.
 6. Then fit dust cap (F-264L). Care should be taken not to damage the earth sleeve flamepath.
 7. Slide the grommet into position and bolt the gland cap firmly to the body.
 8. Note: The certified drawings form a part of the user instructions. Refer to them for further details.
- **Receptacle fitting**
 9. For Receptacle mounting dimensions refer to AS/NZS1299. The flange flamepath used to assemble the receptacle and Exd enclosure with minimum width 12.5mm and maximum gap 0.4mm.
 10. Attach to enclosure via special fasteners.
 11. The special fasteners and/or nuts shall be minimum grade 4.6 (yield stress 240MPa) or for stainless steel minimum grade A*-70 (Yield stress 450MPa)
- **Connection of Protective Earthing Conductors**
 - This range of plugs and receptacles has facility for earthing conductors up to 95 mm²
 - It is the responsibility of the installer to determine and fit the correct sized earth conductors

Use

- Isolate power before connecting or disconnecting.

Assembly

- Ensure sockets are clean and serviceable.
- Correct pin alignment.
- Insert plug using receptacle operating mechanism.
- NB. For quick release mechanism, ensure the locking button is fully home.

Disassembly

- To remove plug from receptacle, utilise the operating mechanism.
- NB. For quick release, lift the locking button first.
- Fit dust cover to plug and receptacle.

Conditions of Use

- Some flameproof joints (flamepath) have dimensions that are different than the values given in table 1 of IEC60079.1. Refer to the manufacture's drawings for details.
- The special fasteners used to assemble the plug and gland shall be minimum grade 4.6 (yield stress 240MPa) or for stainless steel minimum grade A*-70 (Yield stress 450MPa).

This brochure is distributed with the understanding that the authors and editors are not responsible for the results of any actions taken on the basis of the information in this work, or any errors or omission. Further, Minto Industrial Products is not engaged in rendering professional services. Minto Industrial Products expressly disclaims all and any liability to any person in respect of anything and of the consequences of anything done or omitted to be done by any such person in reliance whether whole or partial of the whole or any part of the contents of this publication. All rights reserved. No part of this work covered by copyright may be reproduced or copied in any form or by any means without the written permission of Minto Industrial Products.

TRP-2 300/425A Restrained Termination & Maintenance Instruction Page 2 of 4
Rev J 20230331

Maintenance

- Inspection shall include cleanliness and compliance with certification documentation.
- Check as per AS/NZS 2290.1

Overhaul and Repair

- To be carried out by suitable workshop.
- It is recommended that the equipment is overhauled at intervals that do not exceed the requirements of AS/NZS2290.1.

Certification Details:

Certified to: IEC 60079-0:2017; IEC 60079-1:2015;
AS/NZS 1299:2009 (incorporating amendment No.1)

Certificate of Conformity: IECEX ExTC 22.0037X and ANZEx 22.4181

Type of Protection: Ex db I Mb

Type: (AS/NZS 1299) Type A

Ingress Protection: IP66/68 (2 metres for 30 minutes) for Restrained Plug, Restrained Back to Back Receptacle, Restrained Receptacle, Gland Adapter.
IP66 only for Dummy Plug

Certification Nameplate Details:

TYPICAL 300/425A MOUNTING BRACKET RATING PLATE DETAILS	TYPICAL 300/425A RESTRAINED PLUG RATING PLATE DETAILS	TYPICAL 300/425A 6 PIN RESTRAINED PLUG RATING PLATE DETAILS
CMI AV3 300/425A Ex db I Mb IECEX ExTC 22.0037X ANZEx 22.4181 TYPE A BATCH. xxxxx	M.I.P. AF%@* & AMPS 3 = 300A 4 = 425A # VOLTS 6 = 660V 1 = 1100V 3 = 3300V % INTERIOR R = RUBBER S = SOLID DMC T = TEFLON/STAINLESS @ NOSE CONE S = St, Steel BLANK = BRONZE * GLAND 3 = SMALL 4 = LARGE IP66/68 Ex db I Mb IECEX ExTC 22.0037X ANZEx 22.4181 TYPE A S.O. xxxxx-xx WARNING DO NOT SEPARATE WHEN ENERGIZED	M.I.P. AF%@* & AMPS 3 = 300A 4 = 425A # VOLTS 1 = 1100V 3 = 3300V % INTERIOR R = RUBBER T = TEFLON/STAINLESS @ NOSE CONE S = St, Steel BLANK = BRONZE * GLAND 3 = SMALL 4 = LARGE IP66/68 Ex db I Mb IECEX ExTC 22.0037X ANZEx 22.4181 TYPE A S.O. xxxxx-xx WARNING DO NOT SEPARATE WHEN ENERGIZED

TYPICAL 300/425A RESTRAINED PLUG (INT GLAND) RATING PLATE DETAILS	TYPICAL 300/425A RESTRAINED RECEPTACLE RATING PLATE DETAILS	TYPICAL 300/425A 6 PIN RESTRAINED RECEPTACLE RATING PLATE DETAILS
M.I.P. AFS & AMPS 3 = 300A 4 = 425A # VOLTS 6 = 660V 1 = 1100V IP66/68 Ex db I Mb IECEX ExTC 22.0037X ANZEx 22.4181 TYPE A S.O. xxxxx-xx WARNING DO NOT SEPARATE WHEN ENERGIZED	M.I.P. AGB & AMPS 3 = 300A 4 = 425A # VOLTS 6 = 660V 1 = 1100V 3 = 3300V IP66/68 Ex db I Mb IECEX ExTC 22.0037X ANZEx 22.4181 TYPE A S.O. xxxxx-xx WARNING DO NOT SEPARATE WHEN ENERGIZED	M.I.P. AGB & AMPS 3 = 300A 4 = 425A # VOLTS 1 = 1100V 3 = 3300V IP66/68 Ex db I Mb IECEX ExTC 22.0037X ANZEx 22.4181 TYPE A S.O. xxxxx-xx WARNING DO NOT SEPARATE WHEN ENERGIZED
TYPICAL 300/425A RESTRAINED BACK TO BACK RECEPTACLE RATING PLATE DETAILS	TYPICAL 300/425A 6 PIN RESTRAINED BACK TO BACK RECEPTACLE RATING PLATE DETAILS	TYPICAL 300/425A RESTRAINED DUMMY PLUG RATING PLATE DETAILS
M.I.P. AHB & AMPS 3 = 300A 4 = 425A # VOLTS 6 = 660V 1 = 1100V 3 = 3300V IP66/68 Ex db I Mb IECEX ExTC 22.0037X ANZEx 22.4181 TYPE A S.O. xxxxx-xx WARNING DO NOT SEPARATE WHEN ENERGIZED	M.I.P. AHB & AMPS 3 = 300A 4 = 425A # VOLTS 1 = 1100V 3 = 3300V IP66/68 Ex db I Mb IECEX ExTC 22.0037X ANZEx 22.4181 TYPE A S.O. xxxxx-xx WARNING DO NOT SEPARATE WHEN ENERGIZED	M.I.P. AR%@ & AMPS 3 = 300A 4 = 425A # VOLTS 6 = 660V 1 = 1100V 3 = 3300V % INTERIOR R = RUBBER S = SOLID DMC @ NOSE CONE S = St, Steel BLANK = BRONZE IP66 Ex db I Mb IECEX ExTC 22.0037X ANZEx 22.4181 TYPE A S.O. xxxxx-xx WARNING DO NOT SEPARATE WHEN ENERGIZED
TYPICAL 300/425A 6 PIN RESTRAINED DUMMY PLUG RATING PLATE DETAILS		
M.I.P. ARR@ & AMPS 3 = 300A 4 = 425A # VOLTS 1 = 1100V 3 = 3300V @ NOSE CONE S = St, Steel BLANK = BRONZE IP66 Ex db I Mb IECEX ExTC 22.0037X ANZEx 22.4181 TYPE A S.O. xxxxx-xx WARNING DO NOT SEPARATE WHEN ENERGIZED		

Refer to Instruction TRP-2-2 for additional detailed instructions

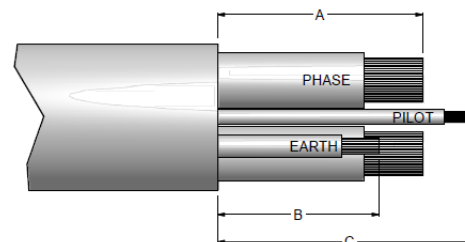
This brochure is distributed with the understanding that the authors and editors are not responsible for the results of any actions taken on the basis of the information in this work, or any errors or omission. Further, Minto Industrial Products is not engaged in rendering professional services. Minto Industrial Products expressly disclaims all and any liability to any person in respect of anything and of the consequences of anything done or omitted to be done by any such person in reliance whether whole or partial of the whole or any part of the contents of this publication. All rights reserved. No part of this work covered by copyright may be reproduced or copied in any form or by any means without the written permission of Minto Industrial Products.

Additional Instructions for 300/425 AMP 660/1100/3300 VOLT Restrained Range

TRP-2-2

Cable Strip Back Dimensions

Strip Back Dimensions (mm)			
	A (Phase)	B (Earth)	C (Pilot)
AF314R3 / AF364R3 / AF414R3 / AF464R3	110	155	155
AF314R4 / AF364R4 / AF414R4 / AF464R4	130	180	120
AF334S3 / AF434S3 / AF316R3 / AF336R3 AF416R3 / AF436R3	128	120	130
AF334S4 / AF434S4 / AF316R4 / AF336R4 AF416R4 / AF436R4	158	150	100
AF314S / AF364S	145	165	120



Note- Cables with semi conductive phase screening shall have the semi conductive screen removed back to the outer sheath.

Fitting of Cables

Note: The torque specified in the certification drawings is for the sealing test where the gland is tightened onto a steel mandrel.

- Cable fitting and testing shall be in compliance with AS/NZS 1747
- AS/NZS 1747:2022 sets out the method of cable installation and subsequent testing.
- Selection of thimbles
 - Thimbles shall be sized so that the internal diameter of the thimble is within 1mm of the stripped conductor diameter.
- Grommet sizing
 - Grommets shall be sized to the cable being used
 - The grommet shall preferably be a conformal fit that fits tightly onto the cable.
 - Grommets that fit loosely, will prevent the cable been effectively sealed in the gland.
- For guidance only, CMI recommend minimum torque settings for fitting cables to the range of 300/425A Restrained Plugs and Receptacle, Gland & Bracket
 - This recommended minimum torque for the gland bolt / screw is: 18NM

Note:

- A suitable calibrated Torque Wrench shall be used for this process
- Initial testing of cable installation to gland:
 - Undertake a "Twist Test" as outlined in AS/NZS 1747:2022.
 - Undertake other tests as outlined in AS/NZS 1747:2022.
- Testing of plug / cable complete.
- Undertake the required tests as outlined in AS/NZS 1747:2022.

Fitting of Sockets to Cable Thimbles

- The following maximum torques shall be applied when screwing the sockets to the cable thimbles
 - Main (Phase) Sockets
 - 6.5 ~ 8Nm torque
 - Pilot Socket
 - 2.5 ~ 3 Nm torque

Note:

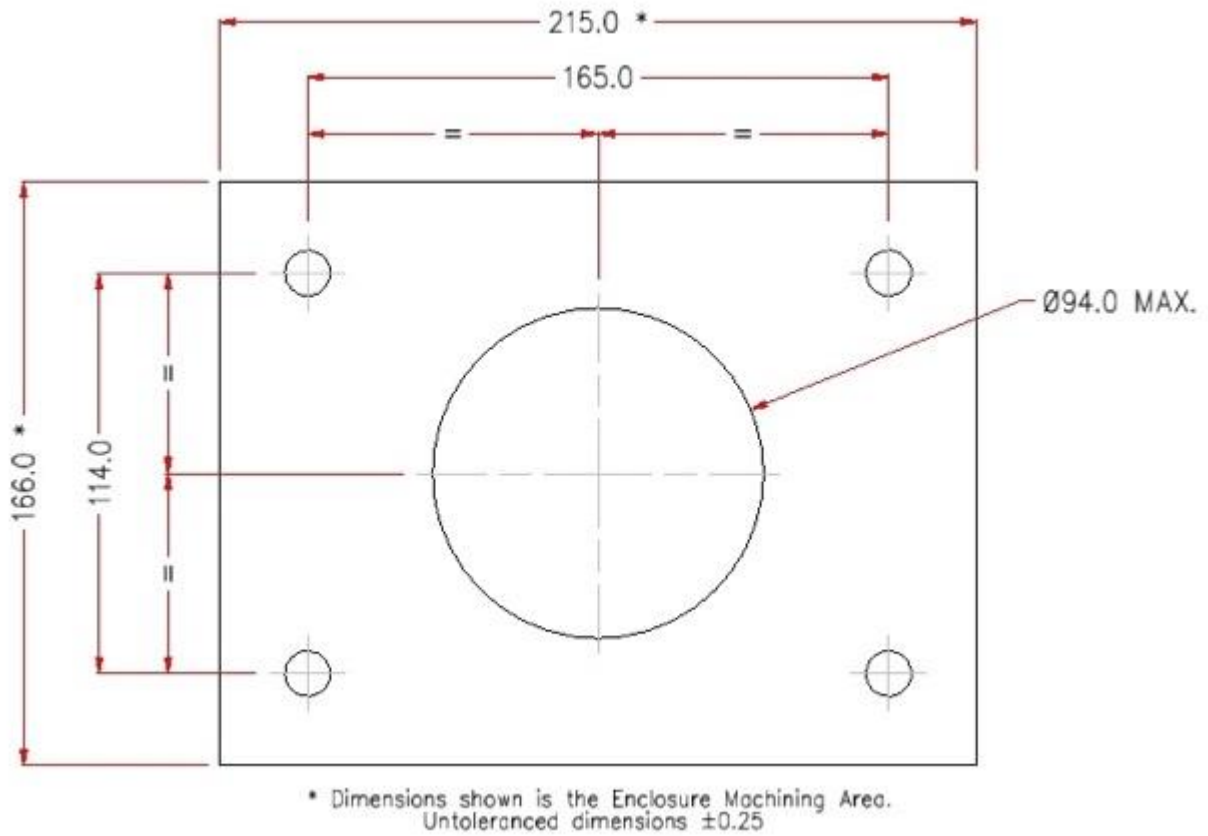
- A suitable calibrated Torque Wrench (recommended ¼ inch size) shall be used for this process

This brochure is distributed with the understanding that the authors and editors are not responsible for the results of any actions taken on the basis of the information in this work, or any errors or omission. Further, Minto Industrial Products is not engaged in rendering professional services. Minto Industrial Products expressly disclaims all and any liability to any person in respect of anything and of the consequences of anything done or omitted to be done by any such person in reliance whether whole or partial of the whole or any part of the contents of this publication. All rights reserved. No part of this work covered by copyright may be reproduced or copied in any form or by any means without the written permission of Minto Industrial Products.

TRP-2-2 300/425A Restrained Termination & Maintenance Instruction Additional Instructions Page 1 of 2

Rev B 20230331

300/425A Receptacle Mounting Details



This brochure is distributed with the understanding that the authors and editors are not responsible for the results of any actions taken on the basis of the information in this work, or any errors or omission. Further, Minto Industrial Products is not engaged in rendering professional services. Minto Industrial Products expressly disclaims all and any liability to any person in respect of anything and of the consequences of anything done or omitted to be done by any such person in reliance whether whole or partial of the whole or any part of the contents of this publication. All rights reserved. No part of this work covered by copyright may be reproduced or copied in any form or by any means without the written permission of Minto Industrial Products.

TRP-2-2 300/425A Restrained Termination & Maintenance Instruction Additional Instructions Page 2 of 2

Rev B 20230331