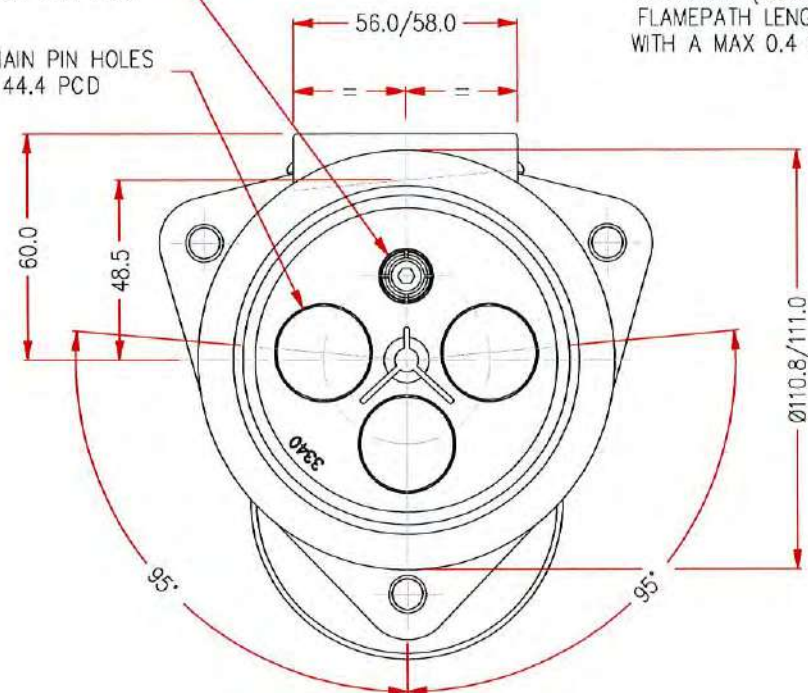


PILOT SOCKET
ON 44.4 PCD
3 MAIN PIN HOLES
ON 44.4 PCD



77.5 NOM. (12.5 MIN.
FLAMEPATH LENGTH
WITH A MAX 0.4 GAP)

1A 1B

2 3

4

5

6

7

8

9 10

RATING PLATE FIXING SCREW
DRILL Ø2.4 WITH MIN 3.0MM
MATERIAL REMAINING UNDER
DRILL POINT

M6 X 1.0 6g/6H
MIN. 11 WALL THICKNESS
BONDED IN WITH "LOCTITE
263" THREADLOCKER

M10 X 1.5 - 6g/6H
CAP CLEARANCE HOLE
Ø11.0/11.27

31.5 NOM. (25.0 MIN.
FLAMEPATH LENGTH
WITH A MAX 0.5 GAP)

SECTION A-A

ITEM No. 18 CEMENTED
IN WITH "LOCTITE 587"
BLUE MAXX

Ex

TESTING & CERTIFICATION

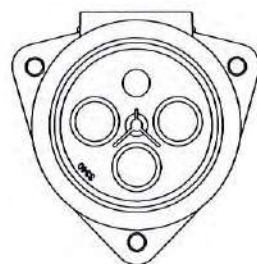
IECEx ExTC 22.0037X-0

ANZEx 22.4181-0

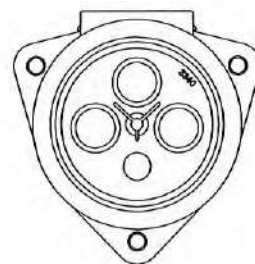
This document is approved as
specified in the listed certificate

MARKING DETAILS

M.I.P.
AR3#1R@
300A
VOLTS 6=660V
1=1100V
© NOSE CONE S=ST. STEEL
BLANK=BRONZE
IP66
Ex db I Mb
IECEx ExTC 22.0037X
ANZEx 22.4181
TYPE A
S.O xxxxx-xx
WARNING
DO NOT SEPARATE WHEN ENERGIZED



1100V
B24 BLUE



660V
X15 ORANGE

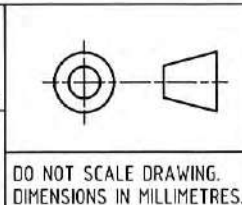
CONFIGURATION

NOTES

1. MINIMUM WALL THICKNESS 3.0mm UNLESS OTHERWISE SPECIFIED ON THE DRAWING.
2. IN CASE OF BLIND HOLES FOR SCREWS, THE REMAINING THICKNESS OF MATERIAL UNDER THE HOLE IS A MINIMUM OF ONE-THIRD OF THE SCREW DIAMETER OR 3MM, WHICHEVER IS GREATER.
3. THE SPECIFICATIONS, DIMENSIONS AND RATINGS COMPLY WITH AS/NZS 1299 ELECTRICAL EQUIPMENT FOR MINES AND QUARRIES.
4. SPECIAL FASTENERS COMPLY WITH ISO 262 WITH A TOLERANCE FIT 6g/6H AND THREAD ENGAGEMENT IS ≥ THE MAJOR DIAMETER AND THE CLEARANCE HOLE IS NOT > H13 (ISO 286-2).
5. ALL MACHINED FLAMEPATH SURFACES AVERAGE R_a DOES NOT EXCEED $6.3\mu m$ (ISO468).
6. MATERIAL HIGH TENSILE BRASS C86500 TO AS 1565-1996 WITH A MINIMUM TENSILE STRENGTH 450 MPa AND MINIMUM 10% ELONGATION.
7. MINIMUM TORQUE OF 10.0 Nm FOR CAP SCREWS.
8. MINIMUM PROPERTY CLASS FOR STAINLESS STEEL FASTENERS IS A*-70.
9. MINIMUM PROPERTY CLASS FOR MILD STEEL FASTENERS IS 4.6.

THIS DRAWING REMAINS
THE PROPERTY OF MINTO
INDUSTRIAL PRODUCTS AND
MUST NOT BE LENT OR COPIED.

PART No.
AR311R / AR311RS
AR361R / AR361RS



DO NOT SCALE DRAWING.
DIMENSIONS IN MILLIMETRES.

ITEM	QTY	PART NUMBER	DESCRIPTION	MATERIAL
19	1	3340	INTERIOR MOULDING	NEOPRENE
18	3	4584	BUNG	ERTACETAL C
17	3	AH113115	M10 X 40 HEX HD SCREW (ISO4017)	STEEL-ZINC PL.
16	1	F-AX000400	HANDLE	NYLON
15	1	AH002987	1/4" X 7/8" SELLOCK PIN	STEEL-ZINC PL.
14	1	AH009380	3/16" STAR WASHER	STEEL-ZINC PL.
13	1	AH117117	M5x10 BUTTON HD CAP SCREW	ST. STEEL
12	2	AH009277	5/16" X 5/8" X 18 WASHER	STEEL-ZINC PL.
11	3	AH115112	M6 X 16 SKT HD CAP SCREW	STEEL-ZINC PL.
10	1	AX004076	RATING PLATE	BRASS
9	2	AH009788	No.4 GAUGE X 3/16" U-DRIVE SCREW	STEEL-ZINC PL.
8	1	4583	CAP CASTING	HIGH TENSILE BRASS - NOTE 6 C86500 TO AS 1565-1996
7	1	4576-1	EARTH LEAD 6mm ² WITH PILOT DIODE	PVC INSUL. CABLE / IN4007 DIODE
6	1	AID19046	O'RING BS 144	NITRILE
5	1	3589-1	PILOT THIMBLE	(COPPER) C14700 OR C11000 OR C10100 TO AS/NZS 1567-1997
4	1	AH009834	10-24 UNC X 11/4" SKT HD SCREW	ST. STEEL
3	1	3138-2	PILOT SOCKET	(COPPER) C14700 OR C11000 OR C10100 TO AS/NZS 1567-1997 SILVER PL. TO AS 1856-2004 CuAg 08
2	1	AH201405	CONTACT SOCKET SPRING	ST. STEEL
1B	1	3342SS	BODY CASTING	ST. STEEL 303 MIN. GRADE
1A	1	3342B	BODY CASTING	HIGH TENSILE BRASS - NOTE 6 C86500 TO AS 1565-1996
ITEM	QTY	PART NUMBER	DESCRIPTION	MATERIAL

Parts List

DATE

ZONE

REV.

07/02

23

A

REVISION

DRAWING CREATED

cmi

Electrical
Products

A division of CMI Operations Pty Ltd

GENERAL TOLERANCE ±0.5
UNLESS OTHERWISE SPECIFIED

MATERIAL
SEE TABLE

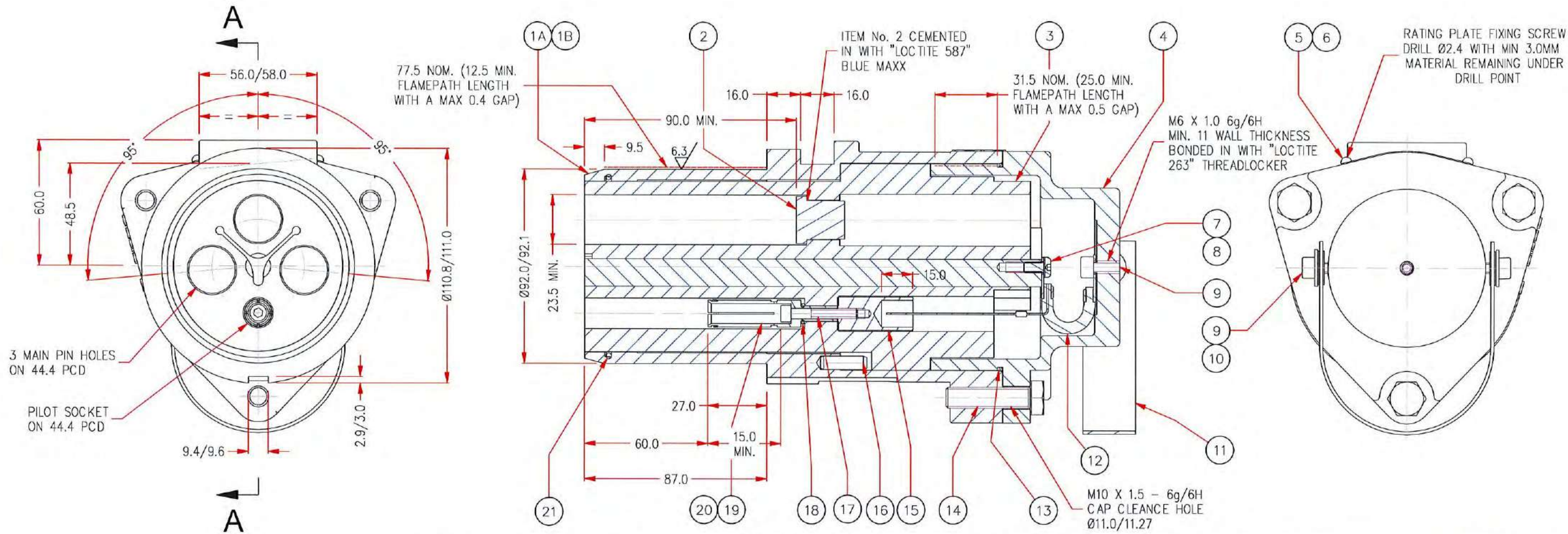
FINISH
COLOUR CODED AS PER
AS 2700

MINTO INDUSTRIAL PRODUCTS

DESCRIPTION
300A 660/1100V
RESTRAINED DUMMY PLUG

SCALE NTS
DATE 22/11/2022
DRAWN EL
CHECKED
APPROVED

DRAWING No.
A3
F-913



MARKING DETAILS

M.I.P.
AR331S@
300A
3300V
© NOSE CONE S=ST. STEEL
BLANK=BRONZE

IP66
Ex db I Mb
IECEx ExTC 22.0037X
ANZEx 22.4181
TYPE A
S.O xxxxx-xx
WARNING
DO NOT SEPARATE WHEN ENERGIZED

SECTION A-A



NOTES

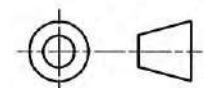
1. MINIMUM WALL THICKNESS 3.0mm UNLESS OTHERWISE SPECIFIED ON THE DRAWING.
2. IN CASE OF BLIND HOLES FOR SCREWS, THE REMAINING THICKNESS OF MATERIAL UNDER THE HOLE IS A MINIMUM OF ONE-THIRD OF THE SCREW DIAMETER OR 3MM, WHICHEVER IS GREATER.
3. THE SPECIFICATIONS, DIMENSIONS AND RATINGS COMPLY WITH AS/NZS 1299 ELECTRICAL EQUIPMENT FOR MINES AND QUARRIES.
4. SPECIAL FASTENERS COMPLY WITH ISO 262 WITH A TOLERANCE FIT 6g/6H AND THREAD ENGAGEMENT IS ≥ THE MAJOR DIAMETER AND THE CLEARANCE HOLE IS NOT > H13 (ISO 286-2).
5. ALL MACHINED FLAMEPATH SURFACES AVERAGE R_a DOES NOT EXCEED $6.3\mu m$ (ISO468).
6. MATERIAL HIGH TENSILE BRASS C86500 TO AS 1565-1996 WITH A MINIMUM TENSILE STRENGTH 450 MPa AND MINIMUM 10% ELONGATION.
7. MINIMUM TORQUE OF 10.0 Nm FOR CAP SCREWS.
8. MINIMUM PROPERTY CLASS FOR STAINLESS STEEL FASTENERS IS A*-70
9. MINIMUM PROPERTY CLASS FOR MILD STEEL FASTENERS IS 4.6

ITEM	QTY	PART NUMBER	DESCRIPTION	MATERIAL
21	1	AID19023	O-RING ID 82.22 X SECT 2.62	NITRILE
20	1	AH201405	CONTACT SOCKET SPRING	ST. STEEL
19	1	3138-2	PILOT SOCKET	(COPPER) C14700 OR C11000 OR C10100 TO AS/NZS 1567-1997 SILVER PL. TO AS 1856-2004 CuAg 08
18	1	AID19030	O-RING ID 6.07 X SECT 1.78	NITRILE
17	1	AH009834	10-24 UNC X 1 1/4" SKT HD SCREW	ST. STEEL
16	2	AH002987	1/4" X 7/8" SELLOCK PIN	STEEL-ZINC PL.
15	1	3984	PILOT THIMBLE	(COPPER) C14700 OR C11000 OR C10100 TO AS/NZS 1567-1997
14	3	AH113115	M10 X 40 HEX HD SCREW (ISO4017)	STEEL-ZINC PL.
13	1	AID19046	O-RING BS 144	NITRILE
12	1	4576-1	EARTH LEAD 6mm ² WITH PILOT DIODE	PVC INSUL. CABLE / IN4007 DIODE
11	1	F-AX000400	DUMMY / PHASE PLUG HANDLE	
10	2	AH009277	5/16" X 5/8" X 18 WASHER	STEEL-ZINC PL.
9	3	AH115112	M6 X 16 SKT HD CAP SCREW	STEEL-ZINC PL.
8	1	AH009380	3/16" STAR WASHER	STEEL-ZINC PL.
7	1	AH117117	M5x10 BUTTON HD CAP SCREW	ST. STEEL
6	1	AX004076	RATING PLATE	BRASS
5	2	AH009788	No.4 GAUGE X 3/16" U-DRIVE SCREW	STEEL-ZINC PL.
4	1	4583	CAP CASTING	HIGH TENSILE BRASS - NOTE 6 C86500 TO AS 1565-1996
3	1	3960	INTERIOR MOULDING	DMC 6804G7B
2	3	4620	DUMMY PLUG BUNG	ERTACETAL C
1B	1	3342-1SS	BODY CASTING	ST. STEEL 303 MIN. GRADE
1A	1	3342-1B	BODY CASTING	HIGH TENSILE BRASS - NOTE 6 C86500 TO AS 1565-1996
ITEM	QTY	PART NUMBER	DESCRIPTION	MATERIAL

Parts List

THIS DRAWING REMAINS THE PROPERTY OF MINTO INDUSTRIAL PRODUCTS AND MUST NOT BE LENT OR COPIED.

AR331S
PART No. AR331SS



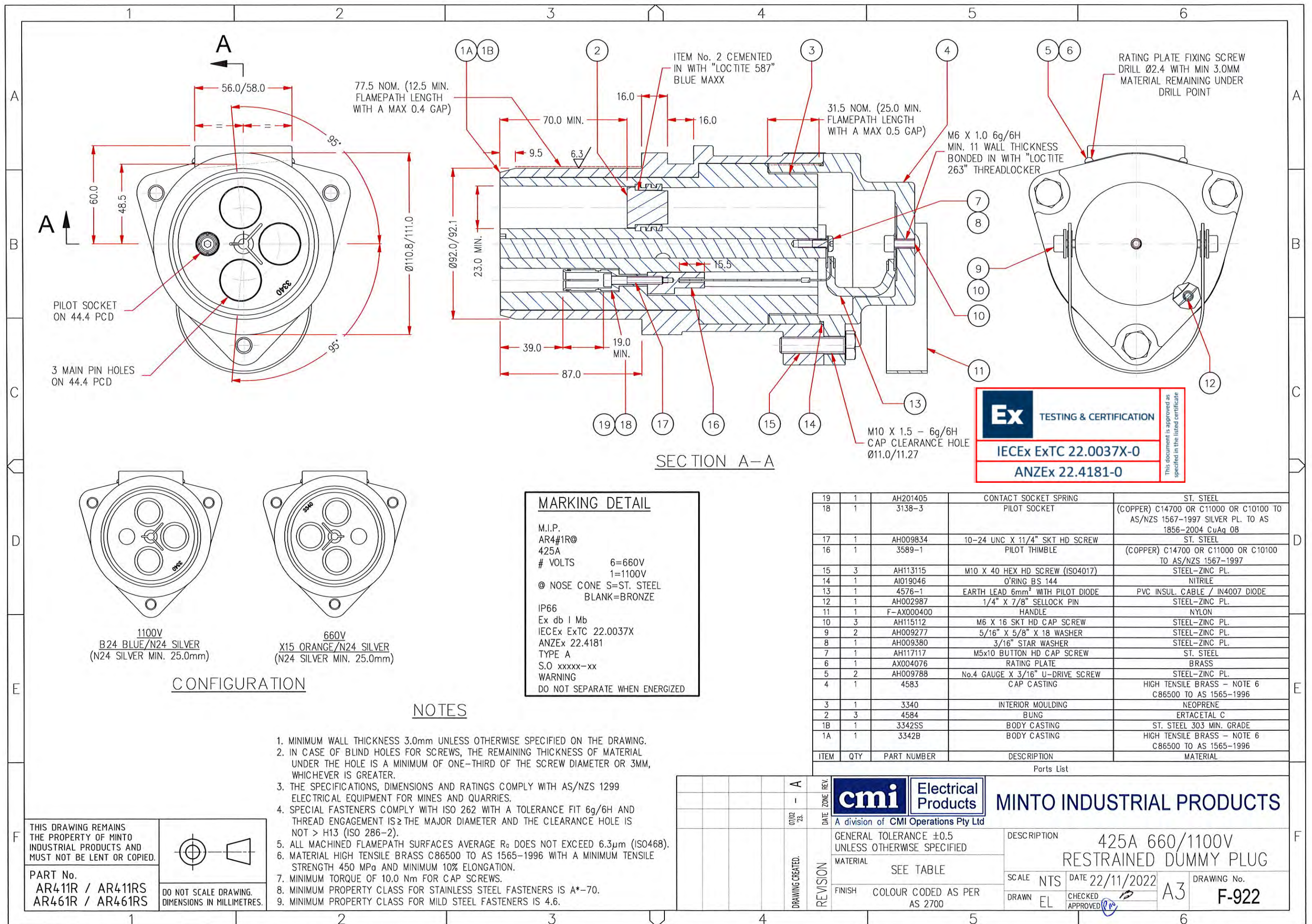
DO NOT SCALE DRAWING.
DIMENSIONS IN MILLIMETRES.

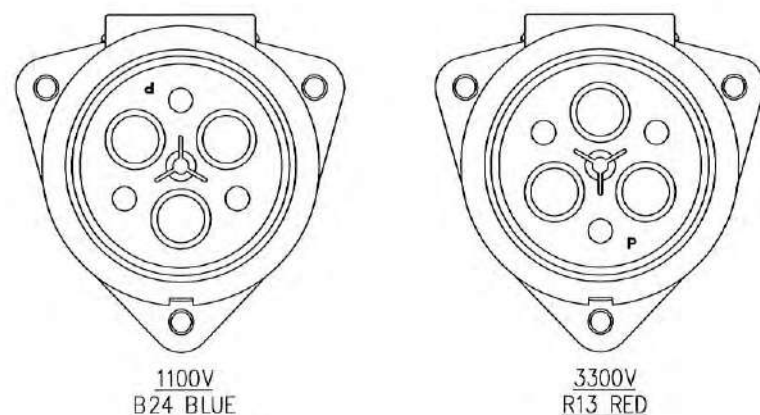
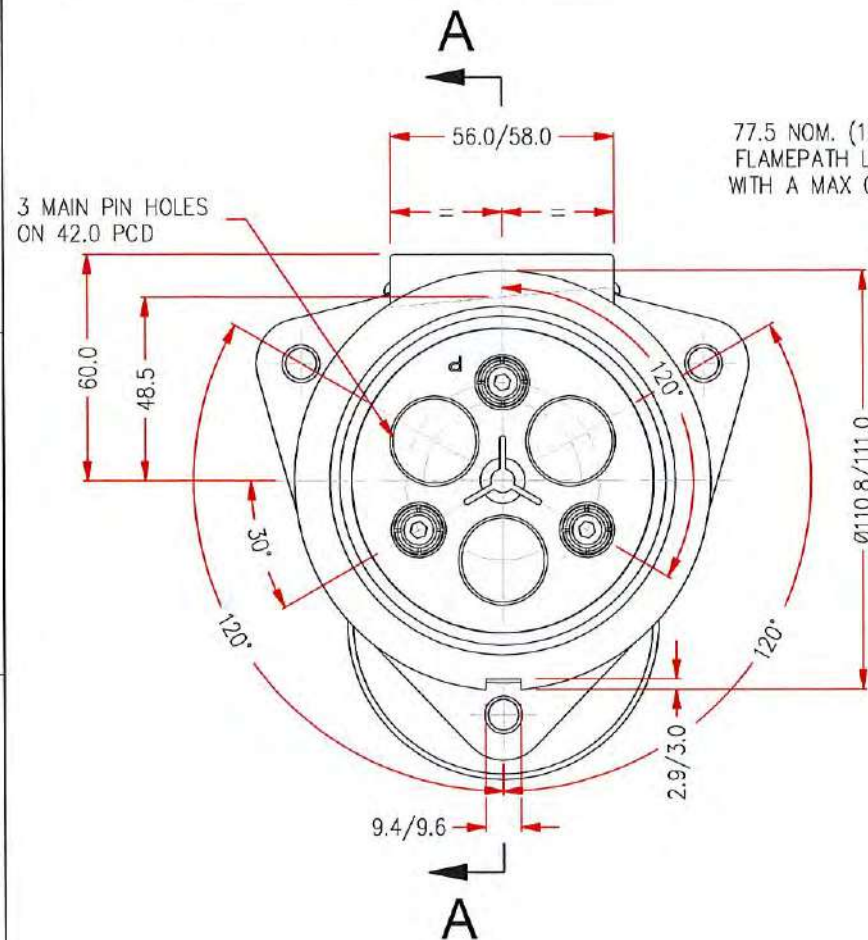
REVISION
DATE 07/02/22
DRAWING CREATED: A

cmi Electrical Products
A division of CMI Operations Pty Ltd
GENERAL TOLERANCE ±0.5 UNLESS OTHERWISE SPECIFIED
MATERIAL SEE TABLE
FINISH R13 RED AS PER AS 2700

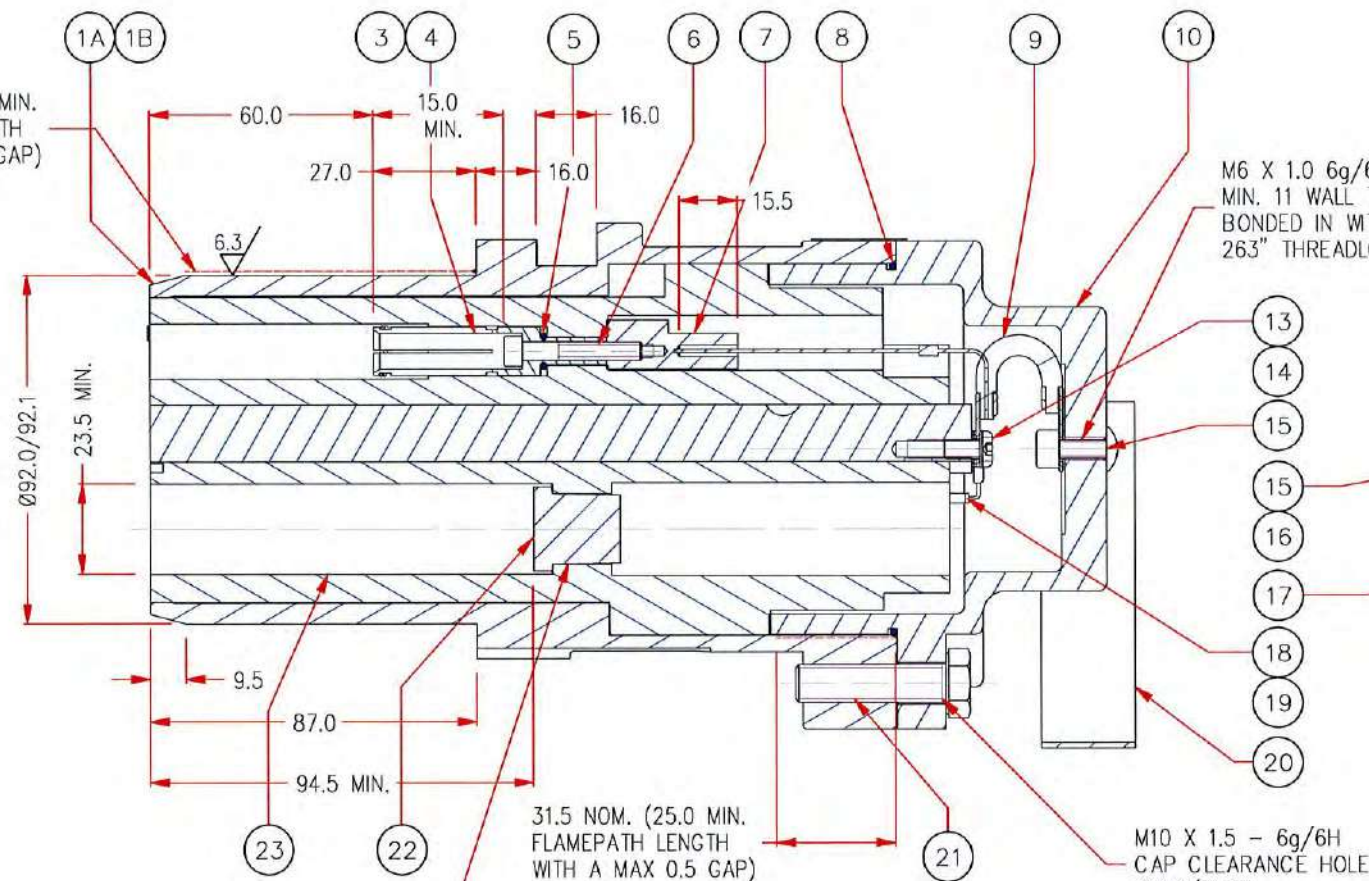
MINTO INDUSTRIAL PRODUCTS

DESCRIPTION 300A 3300V RESTRAINED DUMMY PLUG
SCALE NTS DATE 22/11/2022
DRAWN EL CHECKED APPROVED
DRAWING No. A3 F-919





CONFIGURATION



SECTION A-A

MARKING DETAILS

M.I.P.
AR3#6R@
300A
VOLTS 1=1100V
3=3300V
@ NOSE CONE S=ST. STEEL
BLANK=BRONZE
IP66
Ex db I Mb
IECEx ExTC 22.0037X
ANZEx 22.4181
TYPE A
S.O. xxxxx-xx
WARNING
DO NOT SEPARATE WHEN ENERGIZED

NOTES

1. MINIMUM WALL THICKNESS 3.0mm UNLESS OTHERWISE SPECIFIED ON THE DRAWING.
2. IN CASE OF BLIND HOLES FOR SCREWS, THE REMAINING THICKNESS OF MATERIAL UNDER THE HOLE IS A MINIMUM OF ONE-THIRD OF THE SCREW DIAMETER OR 3MM, WHICHEVER IS GREATER.
3. THE SPECIFICATIONS, DIMENSIONS AND RATINGS COMPLY WITH AS/NZS 1299 ELECTRICAL EQUIPMENT FOR MINES AND QUARRIES.
4. SPECIAL FASTENERS COMPLY WITH ISO 262 WITH A TOLERANCE FIT 6g/6H AND THREAD ENGAGEMENT IS ≥ THE MAJOR DIAMETER AND THE CLEARANCE HOLE IS NOT > H13 (ISO 286-2).
5. ALL MACHINED FLAMEPATH SURFACES AVERAGE R_a DOES NOT EXCEED $6.3\mu m$ (ISO468).
6. MATERIAL HIGH TENSILE BRASS C86500 TO AS 1565-1996 WITH A MINIMUM TENSILE STRENGTH 450 MPa AND MINIMUM 10% ELONGATION.
7. MINIMUM TORQUE OF 10.0 Nm FOR CAP SCREWS.
8. MINIMUM PROPERTY CLASS FOR STAINLESS STEEL FASTENERS IS A*-70.
9. MINIMUM PROPERTY CLASS FOR MILD STEEL FASTENERS IS 4.6.

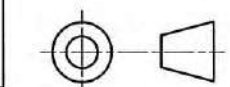
ITEM	QTY	PART NUMBER	DESCRIPTION	MATERIAL
23	1	4034	INTERIOR Moulding	SUPEROHM
22	3	4620	BUNG	ERTACETAL C
21	3	AH113115	M10 X 40 HEX HD SCREW (ISO4017)	STEEL-ZINC PL.
20	1	F-AX000400	HANDLE	NYLON
19	2	CH430ET	RING TERMINATION	BRASS-TIN PL.
18	2	AX022400	127/800 DIODE	IN4007 DIODE
17	1	AH002987	1/4" X 7/8" SELLOCK PIN	STEEL-ZINC PL.
16	2	AH009277	5/16" X 5/8" X 18 WASHER	STEEL-ZINC PL.
15	3	AH115112	M6 X 16 SKT HD CAP SCREW	STEEL-ZINC PL.
14	1	AH009380	3/16" STAR WASHER	STEEL-ZINC PL.
13	1	AH117117	M5x10 BUTTON HD CAP SCREW	ST. STEEL
12	1	AX004076	RATING PLATE	BRASS
11	2	AH009788	No.4 GAUGE X 3/16" U-DRIVE SCREW	STEEL-ZINC PL.
10	1	4583	CAP CASTING	HIGH TENSILE BRASS - NOTE 6 C86500 TO AS 1565-1996
9	1	4576-1	EARTH LEAD 6.0mm ² WITH PILOT DIODE	PVC INSUL. CABLE / IN4007 DIODE
8	1	A019046	O'RING BS 144	NITRILE
7	3	3589-1	PILOT THIMBLE	(COPPER) C14700 OR C11000 OR C10100 TO AS/NZS 1567-1997
6	3	AH009834	10-24 UNC X 11/4" SKT HD SCREW	ST. STEEL
5	3	A019030	O'RING ID 6.07 X SECT 1.78	NITRILE
4	3	3138-2	PILOT SOCKET	(COPPER) C14700 OR C11000 OR C10100 TO AS/NZS 1567-1997 SILVER PL. TO AS 1856-2004 CuAg 08
3	3	AH201405	CONTACT SOCKET SPRING	ST. STEEL
1B	1	3342-5SS	BODY CASTING	ST. STEEL 303 MIN. GRADE
1A	1	3342-5B	BODY CASTING	HIGH TENSILE BRASS - NOTE 6 C86500 TO AS 1565-1996
ITEM	QTY	PART NUMBER	DESCRIPTION	MATERIAL

Parts List

Ex TESTING & CERTIFICATION
IECEx ExTC 22.0037X-0
ANZEx 22.4181-0

THIS DRAWING REMAINS THE PROPERTY OF MINTO INDUSTRIAL PRODUCTS AND MUST NOT BE LENT OR COPIED.

PART No.
AR316R / AR316RS
AR336R / AR336RS



DO NOT SCALE DRAWING.
DIMENSIONS IN MILLIMETRES.

cmi Electrical Products
A division of CMI Operations Pty Ltd

MINTO INDUSTRIAL PRODUCTS

GENERAL TOLERANCE ±0.5
UNLESS OTHERWISE SPECIFIED

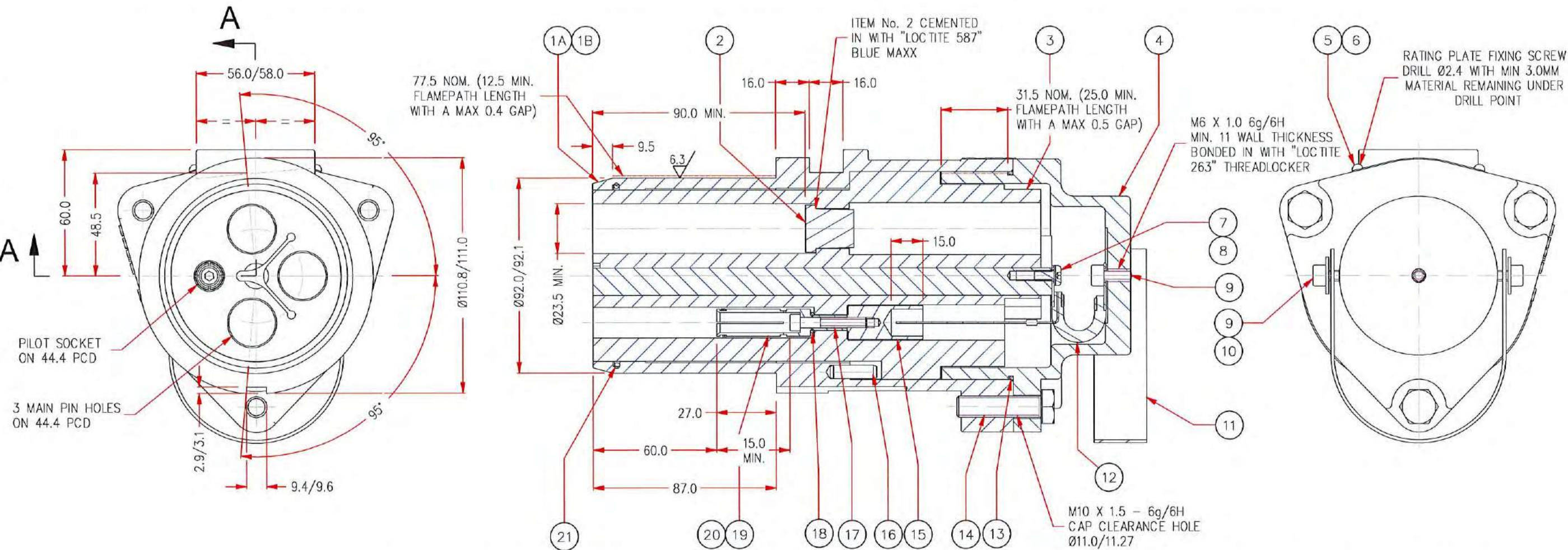
MATERIAL SEE TABLE

FINISH COLOUR CODING AS PER
AS 2700

DESCRIPTION 300A 1100/3300V 6P
RESTRAINED DUMMY PLUG

SCALE NTS DATE 22/11/2022
DRAWN EL CHECKED APPROVED

DRAWING No.
A3 F-931



MARKING DETAILS

M.I.P.
AR431S@
425A
3300V
@ NOSE CONE S=ST. STEEL
BLANK=BRONZE

IP66
Ex db I Mb
IECEx ExTC 22.0037X
ANZEx 22.4181
TYPE A
S.O xxxxx-xx
WARNING
DO NOT SEPARATE WHEN ENERGIZED



ITEM	QTY	PART NUMBER	DESCRIPTION	MATERIAL
21	1	A1019023	O-RING ID 82.22 X SECT 2.62	NITRILE
20	1	AH201405	CONTACT SOCKET SPRING	ST. STEEL
19	1	3138-2	PILOT SOCKET	(COPPER) C14700 OR C11000 OR C10100 TO AS/NZS 1567-1997
18	1	A1019030	O-RING ID 6.07 X SECT 1.78	NITRILE
17	1	AH009834	10-24 UNC X 11/4" SKT HD SCREW	ST. STEEL
16	2	AH002987	1/4" X 7/8" SELLOCK PIN	STEEL-ZINC PL.
15	1	3984	PILOT THIMBLE	(COPPER) C14700 OR C11000 OR C10100 TO AS/NZS 1567-1997
14	3	AH113115	M10 X 40 HEX HD SCREW (ISO4017)	STEEL-ZINC PL.
13	1	A1019046	O-RING BS 144	NITRILE
12	1	4576-1	EARTH LEAD 6mm ² WITH PILOT DIODE	PVC INSUL. CABLE / IN4007DIODE
11	1	F-AX000400	HANDLE	NYLON
10	2	AH009277	5/16" X 5/8" X 18 WASHER	STEEL-ZINC PL.
9	3	AH115112	M6 X 16 SKT HD CAP SCREW	STEEL-ZINC PL.
8	1	AH009380	3/16" STAR WASHER	STEEL-ZINC PL.
7	1	AH117117	M5X10 BUTTON HD CAP SCREW	ST. STEEL
6	1	AX004076	RATING PLATE	BRASS
5	2	AH009788	No.4 GAUGE X 3/16" U-DRIVE SCREW	STEEL-ZINC PL.
4	1	4583	CAP CASTING	HIGH TENSILE BRASS - NOTE 6 C86500 TO AS 1565-1996
3	1	3960	INTERIOR Moulding	DMC6804G7B
2	3	4620	300A 3.3KV DUMMY PLUG BUNG	ERTACETAL C
1B	1	3342-1SS	BODY CASTING	ST. STEEL 303 MIN. GRADE
1A	1	3342-1B	BODY CASTING	HIGH TENSILE BRASS - NOTE 6 C86500 TO AS 1565-1996
ITEM	QTY	PART NUMBER	DESCRIPTION	MATERIAL

- NOTES**
1. MINIMUM WALL THICKNESS 3.0mm UNLESS OTHERWISE SPECIFIED ON THE DRAWING.
 2. IN CASE OF BLIND HOLES FOR SCREWS, THE REMAINING THICKNESS OF MATERIAL UNDER THE HOLE IS A MINIMUM OF ONE-THIRD OF THE SCREW DIAMETER OR 3MM, WHICHEVER IS GREATER.
 3. THE SPECIFICATIONS, DIMENSIONS AND RATINGS COMPLY WITH AS/NZS 1299 ELECTRICAL EQUIPMENT FOR MINES AND QUARRIES.
 4. SPECIAL FASTENERS COMPLY WITH ISO 262 WITH A TOLERANCE FIT 6g/6H AND THREAD ENGAGEMENT IS ≥ THE MAJOR DIAMETER AND THE CLEARANCE HOLE IS NOT > H13 (ISO 286-2).
 5. ALL MACHINED FLAMEPATH SURFACES AVERAGE R_a DOES NOT EXCEED 6.3µm (ISO468).
 6. MATERIAL HIGH TENSILE BRASS C86500 TO AS 1565-1996 WITH A MINIMUM TENSILE STRENGTH 450 MPa AND MINIMUM 10% ELONGATION.
 7. MINIMUM TORQUE OF 10.0 Nm FOR CAP SCREWS.
 8. MINIMUM PROPERTY CLASS FOR STAINLESS STEEL FASTENERS IS A*-70
 9. MINIMUM PROPERTY CLASS FOR MILD STEEL FASTENERS IS 4.6

THIS DRAWING REMAINS THE PROPERTY OF MINTO INDUSTRIAL PRODUCTS AND MUST NOT BE LENT OR COPIED.

AR431S
PART No. AR431SS

DO NOT SCALE DRAWING. DIMENSIONS IN MILLIMETRES.

REVISION

DATE 07/02/23

ZONE A

REVISION

DATE 07/02/23

ZONE A

cmi Electrical Products

A division of CMI Operations Pty Ltd

GENERAL TOLERANCE ±0.5 UNLESS OTHERWISE SPECIFIED

MATERIAL SEE TABLE

FINISH R13 RED/N24 SILVER (N24 SILVER MIN. 25.0mm) AS PER AS 2700

DESCRIPTION

425A 3300V RESTRAINED DUMMY PLUG

SCALE NTS

DATE 22/11/2022

DRAWN AB

CHECKED APPROVED

DRAWING No.

A3 F-949

Instructions for 300/425 AMP 660/1100/3300 VOLT Restrained Range

TRP2

Catalogue Number	Description
AF3#4&@*	300A 660/1100V Restrained Plug
AF3#6&@*	300A 1100/3300V 6P Restrained Plug
AF334%@*	300A 3300V Restrained Plug
AF4#4&@*	425A 660/1100V Restrained Plug
AF4#6%@*	425A 1100/3300V 6P Restrained Plug
AF434%@*	425A 3300V Restrained Plug.
AG3#4B	300A 660/1100/3300V Restrained Receptacle
AG3#4BQR	300A 660/1100/3300V Q/R Restrained Receptacle
AG3#6B	300A 1100/3300V 6P Restrained Receptacle
AG3#6BQR	300A 1100/3300V Q/R 6P Restrained Receptacle
AG334B	300A 3300V Restrained Receptacle
AG334BQR	300A 3300V Q/R Restrained Receptacle
AG4#4B	425A 660/1100V Restrained Receptacle
AG4#4BQR	425A 660/1100V Q/R Restrained Receptacle
AG4#6BQR	425A 1100/3300V Q/R 6P Restrained Receptacle
AG434BQR	425A 3300V Q/R Restrained Receptacle
AH3#4B	300A 660/1100V Restrained Back to Back Receptacle
AH3#4BQR	300A 660/1100V Q/R Restrained Back to Back Receptacle
AH3#6B	300A 1100/3300V 6P Restrained Back to Back Receptacle
AH3#6BQR	300A 1100/3300V Q/R 6P Restrained Back to Back Receptacle
AH334B	300A 3300V Restrained Back to Back Receptacle
AH334BQR	300A 3300V Q/R Restrained Back to Back Receptacle
AH4#4B	425A 660/1100V Restrained Back to Back Receptacle
AH4#4BQR	425A 660/1100V Q/R Restrained Back to Back Receptacle
AH4#6BQR	425A 1100/3300V Q/R 6P Restrained Back to Back Receptacle
AH434BQR	425A 3300V Q/R Restrained Back to Back Receptacle
AR3#1R@	300A 660/1100V Restrained Dummy Plug
AR3#6R@	300A 1100V/3300 6P Restrained Dummy Plug
AR331S@	300A 3300V Restrained Dummy Plug
AR4#1R@	425A 660/1100V Restrained Dummy Plug
AR4#6R@	425A 1100V/3300 6P Restrained Dummy Plug
AR431S@	425A 3300V Restrained Dummy Plug

Note:

Marking:

1. # Volts: 6=660V, 1=1100V, 3=3300V
2. % Interior: S = Solid DMC, T = Teflon/Stainless
3. & Interior R = Rubber, T = Teflon/Stainless
4. @ Nose Cone: S=ST. Steel, Blank=Bronze.
5. * Gland: 3=Small, 4=large.

This brochure is distributed with the understanding that the authors and editors are not responsible for the results of any actions taken on the basis of the information in this work, or any errors or omission. Further, Minto Industrial Products is not engaged in rendering professional services. Minto Industrial Products expressly disclaims all and any liability to any person in respect of anything and of the consequences of anything done or omitted to be done by any such person in reliance whether whole or partial of the whole or any part of the contents of this publication. All rights reserved. No part of this work covered by copyright may be reproduced or copied in any form or by any means without the written permission of Minto Industrial Products.



Installation

- Confirm components suitable for application e.g. thimbles and grommets suitable for the conductors and cable.
- Plug fitting cable preparation.
 1. Slide the gland cap, grommet and plug body along the cable.
 2. Prepare the cable to the dimensions given in the strip back table.
 3. Crimp or solder the thimbles to the phase, pilot and earth cores.
- **Plug fitting**
 4. Fit the conductors to the appropriate location securing in place with screw through socket where appropriate.
 5. Assemble the plug, ensuring the interior rotation conforms to AS/NZS1299.
 6. Then fit dust cap (F-264L). Care should be taken not to damage the earth sleeve flamepath.
 7. Slide the grommet into position and bolt the gland cap firmly to the body.
 8. Note: The certified drawings form a part of the user instructions. Refer to them for further details.
- **Receptacle fitting**
 9. For Receptacle mounting dimensions refer to AS/NZS1299. The flange flamepath used to assemble the receptacle and Exd enclosure with minimum width 12.5mm and maximum gap 0.4mm.
 10. Attach to enclosure via special fasteners.
 11. The special fasteners and/or nuts shall be minimum grade 4.6 (yield stress 240MPa) or for stainless steel minimum grade A*-70 (Yield stress 450MPa)
- **Connection of Protective Earthing Conductors**
 - This range of plugs and receptacles has facility for earthing conductors up to 95 mm²
 - It is the responsibility of the installer to determine and fit the correct sized earth conductors

Use

- Isolate power before connecting or disconnecting.

Assembly

- Ensure sockets are clean and serviceable.
- Correct pin alignment.
- Insert plug using receptacle operating mechanism.
- NB. For quick release mechanism, ensure the locking button is fully home.

Disassembly

- To remove plug from receptacle, utilise the operating mechanism.
- NB. For quick release, lift the locking button first.
- Fit dust cover to plug and receptacle.

Conditions of Use

- Some flameproof joints (flamepath) have dimensions that are different than the values given in table 1 of IEC60079.1. Refer to the manufacture's drawings for details.
- The special fasteners used to assemble the plug and gland shall be minimum grade 4.6 (yield stress 240MPa) or for stainless steel minimum grade A*-70 (Yield stress 450MPa).

This brochure is distributed with the understanding that the authors and editors are not responsible for the results of any actions taken on the basis of the information in this work, or any errors or omission. Further, Minto Industrial Products is not engaged in rendering professional services. Minto Industrial Products expressly disclaims all and any liability to any person in respect of anything and of the consequences of anything done or omitted to be done by any such person in reliance whether whole or partial of the whole or any part of the contents of this publication. All rights reserved. No part of this work covered by copyright may be reproduced or copied in any form or by any means without the written permission of Minto Industrial Products.

TRP-2 300/425A Restrained Termination & Maintenance Instruction Page 2 of 4
Rev J 20230331



minto industrial products



Aflec Cables



XLPE cables



HARTLAND CABLES



Global-Mark.com.au®

Maintenance

- Inspection shall include cleanliness and compliance with certification documentation.
- Check as per AS/NZS 2290.1

Overhaul and Repair

- To be carried out by suitable workshop.
- It is recommended that the equipment is overhauled at intervals that do not exceed the requirements of AS/NZS2290.1.

Certification Details:

Certified to: IEC 60079-0:2017; IEC 60079-1:2015;
AS/NZS 1299:2009 (incorporating amendment No.1)

Certificate of Conformity: IECEX ExTC 22.0037X and ANZEx 22.4181

Type of Protection: Ex db I Mb

Type: (AS/NZS 1299) Type A

Ingress Protection: IP66/68 (2 metres for 30 minutes) for Restrained Plug, Restrained Back to Back Receptacle, Restrained Receptacle, Gland Adapter.
IP66 only for Dummy Plug

Certification Nameplate Details:

TYPICAL 300/425A MOUNTING BRACKET RATING PLATE DETAILS	TYPICAL 300/425A RESTRAINED PLUG RATING PLATE DETAILS	TYPICAL 300/425A 6 PIN RESTRAINED PLUG RATING PLATE DETAILS
CMI AV3 300/425A Ex db I Mb IECEX ExTC 22.0037X ANZEx 22.4181 TYPE A BATCH. xxxxx	M.I.P. AF%@* & AMPS 3 = 300A 4 = 425A # VOLTS 6 = 660V 1 = 1100V 3 = 3300V % INTERIOR R = RUBBER S = SOLID DMC T = TEFLON/STAINLESS @ NOSE CONE S = St, Steel BLANK = BRONZE * GLAND 3 = SMALL 4 = LARGE IP66/68 Ex db I Mb IECEX ExTC 22.0037X ANZEx 22.4181 TYPE A S.O. xxxxx-xx WARNING DO NOT SEPARATE WHEN ENERGIZED	M.I.P. AF%@* & AMPS 3 = 300A 4 = 425A # VOLTS 1 = 1100V 3 = 3300V % INTERIOR R = RUBBER T = TEFLON/STAINLESS @ NOSE CONE S = St, Steel BLANK = BRONZE * GLAND 3 = SMALL 4 = LARGE IP66/68 Ex db I Mb IECEX ExTC 22.0037X ANZEx 22.4181 TYPE A S.O. xxxxx-xx WARNING DO NOT SEPARATE WHEN ENERGIZED

TYPICAL 300/425A RESTRAINED PLUG (INT GLAND) RATING PLATE DETAILS	TYPICAL 300/425A RESTRAINED RECEPTACLE RATING PLATE DETAILS	TYPICAL 300/425A 6 PIN RESTRAINED RECEPTACLE RATING PLATE DETAILS
M.I.P. AFS & AMPS 3 = 300A 4 = 425A # VOLTS 6 = 660V 1 = 1100V IP66/68 Ex db I Mb IECEX ExTC 22.0037X ANZEx 22.4181 TYPE A S.O. xxxxx-xx WARNING DO NOT SEPARATE WHEN ENERGIZED	M.I.P. AGB & AMPS 3 = 300A 4 = 425A # VOLTS 6 = 660V 1 = 1100V 3 = 3300V IP66/68 Ex db I Mb IECEX ExTC 22.0037X ANZEx 22.4181 TYPE A S.O. xxxxx-xx WARNING DO NOT SEPARATE WHEN ENERGIZED	M.I.P. AGB & AMPS 3 = 300A 4 = 425A # VOLTS 1 = 1100V 3 = 3300V IP66/68 Ex db I Mb IECEX ExTC 22.0037X ANZEx 22.4181 TYPE A S.O. xxxxx-xx WARNING DO NOT SEPARATE WHEN ENERGIZED
TYPICAL 300/425A RESTRAINED BACK TO BACK RECEPTACLE RATING PLATE DETAILS	TYPICAL 300/425A 6 PIN RESTRAINED BACK TO BACK RECEPTACLE RATING PLATE DETAILS	TYPICAL 300/425A RESTRAINED DUMMY PLUG RATING PLATE DETAILS
M.I.P. AHB & AMPS 3 = 300A 4 = 425A # VOLTS 6 = 660V 1 = 1100V 3 = 3300V IP66/68 Ex db I Mb IECEX ExTC 22.0037X ANZEx 22.4181 TYPE A S.O. xxxxx-xx WARNING DO NOT SEPARATE WHEN ENERGIZED	M.I.P. AHB & AMPS 3 = 300A 4 = 425A # VOLTS 1 = 1100V 3 = 3300V IP66/68 Ex db I Mb IECEX ExTC 22.0037X ANZEx 22.4181 TYPE A S.O. xxxxx-xx WARNING DO NOT SEPARATE WHEN ENERGIZED	M.I.P. AR%@ & AMPS 3 = 300A 4 = 425A # VOLTS 6 = 660V 1 = 1100V 3 = 3300V % INTERIOR R = RUBBER S = SOLID DMC @ NOSE CONE S = St, Steel BLANK = BRONZE IP66 Ex db I Mb IECEX ExTC 22.0037X ANZEx 22.4181 TYPE A S.O. xxxxx-xx WARNING DO NOT SEPARATE WHEN ENERGIZED
TYPICAL 300/425A 6 PIN RESTRAINED DUMMY PLUG RATING PLATE DETAILS		
M.I.P. ARR@ & AMPS 3 = 300A 4 = 425A # VOLTS 1 = 1100V 3 = 3300V @ NOSE CONE S = St, Steel BLANK = BRONZE IP66 Ex db I Mb IECEX ExTC 22.0037X ANZEx 22.4181 TYPE A S.O. xxxxx-xx WARNING DO NOT SEPARATE WHEN ENERGIZED		

Refer to Instruction TRP-2-2 for additional detailed instructions

This brochure is distributed with the understanding that the authors and editors are not responsible for the results of any actions taken on the basis of the information in this work, or any errors or omission. Further, Minto Industrial Products is not engaged in rendering professional services. Minto Industrial Products expressly disclaims all and any liability to any person in respect of anything and of the consequences of anything done or omitted to be done by any such person in reliance whether whole or partial of the whole or any part of the contents of this publication. All rights reserved. No part of this work covered by copyright may be reproduced or copied in any form or by any means without the written permission of Minto Industrial Products.

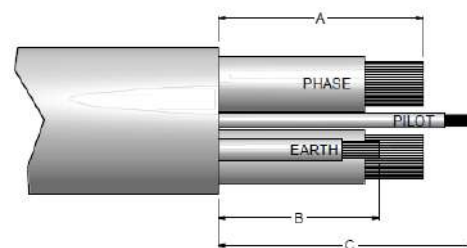
TRP-2 300/425A Restrained Termination & Maintenance Instruction Page 4 of 4
Rev J 20230331

Additional Instructions for 300/425 AMP 660/1100/3300 VOLT Restrained Range

TRP-2-2

Cable Strip Back Dimensions

Strip Back Dimensions (mm)			
	A (Phase)	B (Earth)	C (Pilot)
AF314R3 / AF364R3 / AF414R3 / AF464R3	110	155	155
AF314R4 / AF364R4 / AF414R4 / AF464R4	130	180	120
AF334S3 / AF434S3 / AF316R3 / AF336R3 AF416R3 / AF436R3	128	120	130
AF334S4 / AF434S4 / AF316R4 / AF336R4 AF416R4 / AF436R4	158	150	100
AF314S / AF364S	145	165	120



Note- Cables with semi conductive phase screening shall have the semi conductive screen removed back to the outer sheath.

Fitting of Cables

Note: The torque specified in the certification drawings is for the sealing test where the gland is tightened onto a steel mandrel.

- Cable fitting and testing shall be in compliance with AS/NZS 1747
- AS/NZS 1747:2022 sets out the method of cable installation and subsequent testing.
- Selection of thimbles
 - Thimbles shall be sized so that the internal diameter of the thimble is within 1mm of the stripped conductor diameter.
- Grommet sizing
 - Grommets shall be sized to the cable being used
 - The grommet shall preferably be a conformal fit that fits tightly onto the cable.
 - Grommets that fit loosely, will prevent the cable been effectively sealed in the gland.
- For guidance only, CMI recommend minimum torque settings for fitting cables to the range of 300/425A Restrained Plugs and Receptacle, Gland & Bracket
 - This recommended minimum torque for the gland bolt / screw is: 18NM

Note:

- A suitable calibrated Torque Wrench shall be used for this process
- Initial testing of cable installation to gland:
 - Undertake a "Twist Test" as outlined in AS/NZS 1747:2022.
 - Undertake other tests as outlined in AS/NZS 1747:2022.
- Testing of plug / cable complete.
- Undertake the required tests as outlined in AS/NZS 1747:2022.

Fitting of Sockets to Cable Thimbles

- The following maximum torques shall be applied when screwing the sockets to the cable thimbles
 - Main (Phase) Sockets
 - 6.5 ~ 8Nm torque
 - Pilot Socket
 - 2.5 ~ 3 Nm torque

Note:

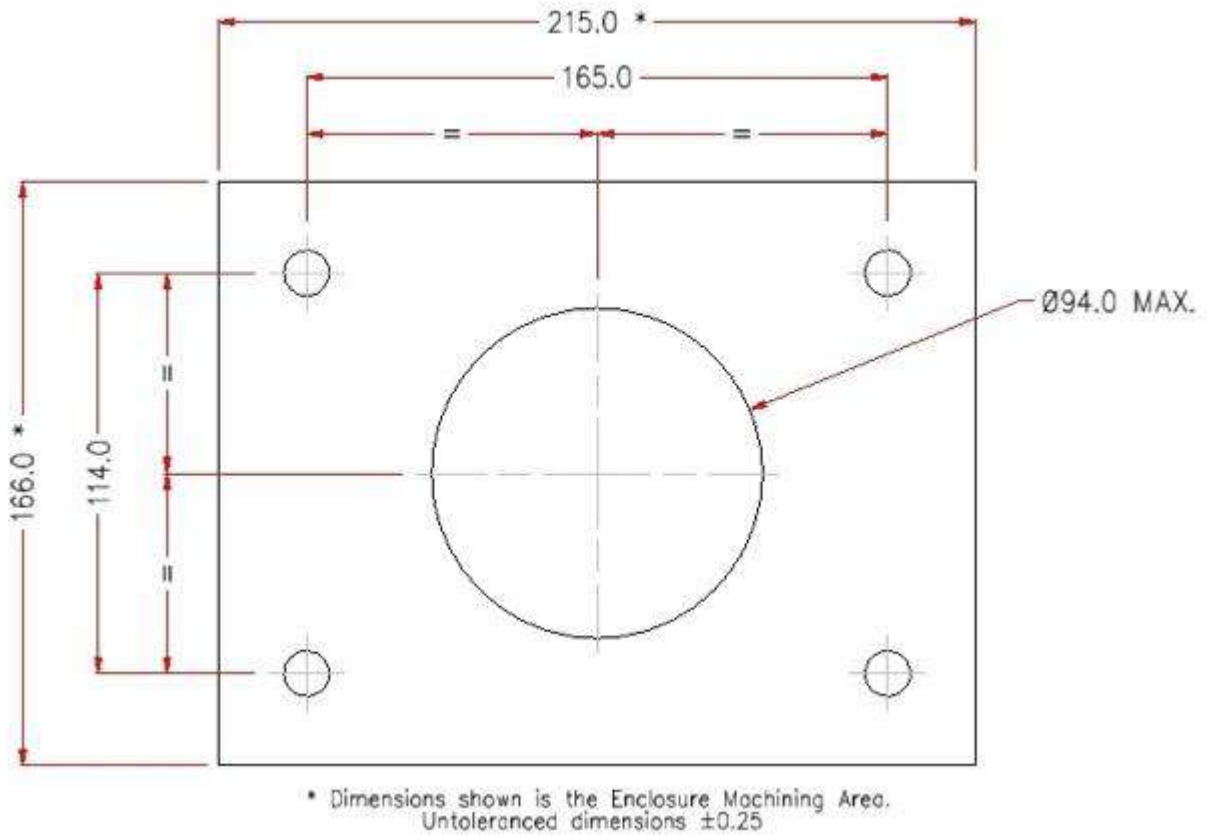
- A suitable calibrated Torque Wrench (recommended ¼ inch size) shall be used for this process

This brochure is distributed with the understanding that the authors and editors are not responsible for the results of any actions taken on the basis of the information in this work, or any errors or omission. Further, Minto Industrial Products is not engaged in rendering professional services. Minto Industrial Products expressly disclaims all and any liability to any person in respect of anything and of the consequences of anything done or omitted to be done by any such person in reliance whether whole or partial of the whole or any part of the contents of this publication. All rights reserved. No part of this work covered by copyright may be reproduced or copied in any form or by any means without the written permission of Minto Industrial Products.

TRP-2-2 300/425A Restrained Termination & Maintenance Instruction Additional Instructions Page 1 of 2

Rev B 20230331

300/425A Receptacle Mounting Details



This brochure is distributed with the understanding that the authors and editors are not responsible for the results of any actions taken on the basis of the information in this work, or any errors or omission. Further, Minto Industrial Products is not engaged in rendering professional services. Minto Industrial Products expressly disclaims all and any liability to any person in respect of anything and of the consequences of anything done or omitted to be done by any such person in reliance whether whole or partial of the whole or any part of the contents of this publication. All rights reserved. No part of this work covered by copyright may be reproduced or copied in any form or by any means without the written permission of Minto Industrial Products.

TRP-2-2 300/425A Restrained Termination & Maintenance Instruction Additional Instructions Page 2 of 2

Rev B 20230331