

SECTION A-A

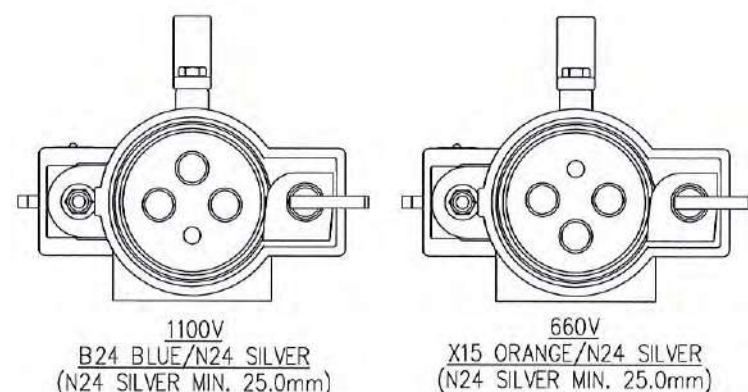
MARKING DETAILS

M.I.P.
AH4#4B
425A
VOLTS 6=660V
1=1100V
IP66/68
Ex db I Mb
IECEx ExTC 22.0037X
ANZEx 22.4181
TYPE A
S.O xxxxx-xx
WARNING
DO NOT SEPARATE WHEN ENERGIZED

ITEM	QTY	PART NUMBER	DESCRIPTION	MATERIAL
24	1	4105B	BODY CASTING	HIGH TENSILE BRASS - NOTE 6 C86500 TO AS 1565-1996
23	8	AH115112	M6 X 16 SKT HD CAP SCREW	STEEL-ZINC PL
22	1	4591	PILOT PIN MALE	(COPPER) C14700 OR C11000 OR C10100 TO AS/NZS 1567-1997 SILVER PL TO AS 1856-2004 CuAg 08
21	1	40435	SKID PLATE (OPTIONAL)	STEEL-ZINC PL
20	2	3028-1	SCRAPING EARTH CONTACT	PHOSPHOR BRONZE
19	2	AH151016	M4 X 20 CH HD SCREW	BRASS
18	1	4587	PILOT INSULATOR	PTFE
17	1	4592	PILOT PIN FEMALE	(COPPER) C14700 OR C11000 OR C10100 TO AS/NZS 1567-1997 SILVER PL TO AS 1856-2004 CuAg 08
16	2	4401-3	SEAL	NEOPRENE RUBBER
15	3	4589	MAIN PIN	(COPPER) C14700 OR C11000 OR C10100 TO AS/NZS 1567-1997 SILVER PL TO AS 1856-2004 CuAg 08
14	6	AH001151	SNAP RING 18MM	MILD STEEL
13	2	AH009788	No.4 GAUGE X 3/16" U-DRIVE SCREW	STEEL-ZINC PL
12	1	AX004076	RATING PLATE	BRASS
11	1	4035	LIFTING HANDLE	STEEL-ZINC PL
10	6	AH113111	M10 X 16 HEX HEAD SCREW	STEEL-ZINC PL
9	1	4586	RETAINING PLATE	FREE CUTTING BRASS C38500 TO AS/NZS 1567-1997
8	3	4588	MAIN INSULATOR	PTFE
7	1	4585	INTERIOR PLATE	FREE CUTTING BRASS C38500 TO AS/NZS 1567-1997
6	2	AH009008	7/16" UNF NYLOC NUT	STEEL-ZINC PL
5	4	AH009280	1/2" X 1" X 16 WASHER	STEEL-ZINC PL
4	2	3337B	JACKING SCREW PAWL	HIGH TENSILE BRASS - NOTE 6 C86500 TO AS 1565-1996
3	2	AH002987	1/4" X 7/8" SELLOCK PIN	STEEL-ZINC PL
2	2	4037	JACKING SCREW SPINDAL	ST. STEEL
1	2	3338	JACKING SCREW HANDLE	STEEL-ZINC PL
ITEM	QTY	PART NUMBER	DESCRIPTION	MATERIAL

Parts List

CONFIGURATION

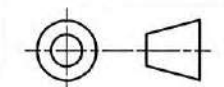


NOTES

1. MINIMUM WALL THICKNESS 3.0mm UNLESS OTHERWISE SPECIFIED ON THE DRAWING.
2. IN CASE OF BLIND HOLES FOR SCREWS, THE REMAINING THICKNESS OF MATERIAL UNDER THE HOLE IS A MINIMUM OF ONE-THIRD OF THE SCREW DIAMETER OR 3MM, WHICHEVER IS GREATER.
3. THE SPECIFICATIONS, DIMENSIONS AND RATINGS COMPLY WITH AS/NZS 1299 ELECTRICAL EQUIPMENT FOR MINES AND QUARRIES.
4. SPECIAL FASTENERS COMPLY WITH ISO 282 WITH A TOLERANCE FIT 6g/6H AND THREAD ENGAGEMENT IS ≥ THE MAJOR DIAMETER AND THE CLEARANCE HOLE IS NOT > H13 (ISO 286-2).
5. ALL MACHINED FLAMEPATH SURFACES AVERAGE R_a DOES NOT EXCEED 6.3µm (ISO 468).
6. ALL FLAMEPATH LENGTHS/DIAMETERS/SIZES ARE MIRROR FOR BOTH SIDES OF BACK TO BACK RECEPTACLE.
7. MATERIAL HIGH TENSILE BRASS C86500 TO AS 1565-1996 WITH A MINIMUM TENSILE STRENGTH 450 MPa AND MINIMUM 10% ELONGATION.
8. MINIMUM PROPERTY CLASS FOR STAINLESS STEEL FASTENERS IS A*-70.
9. MINIMUM PROPERTY CLASS FOR MILD STEEL FASTENERS IS 4.6.

THIS DRAWING REMAINS THE PROPERTY OF MINTO INDUSTRIAL PRODUCTS AND MUST NOT BE LENT OR COPIED.

AH414B
PART No. AH464B



DO NOT SCALE DRAWING.
DIMENSIONS IN MILLIMETRES.

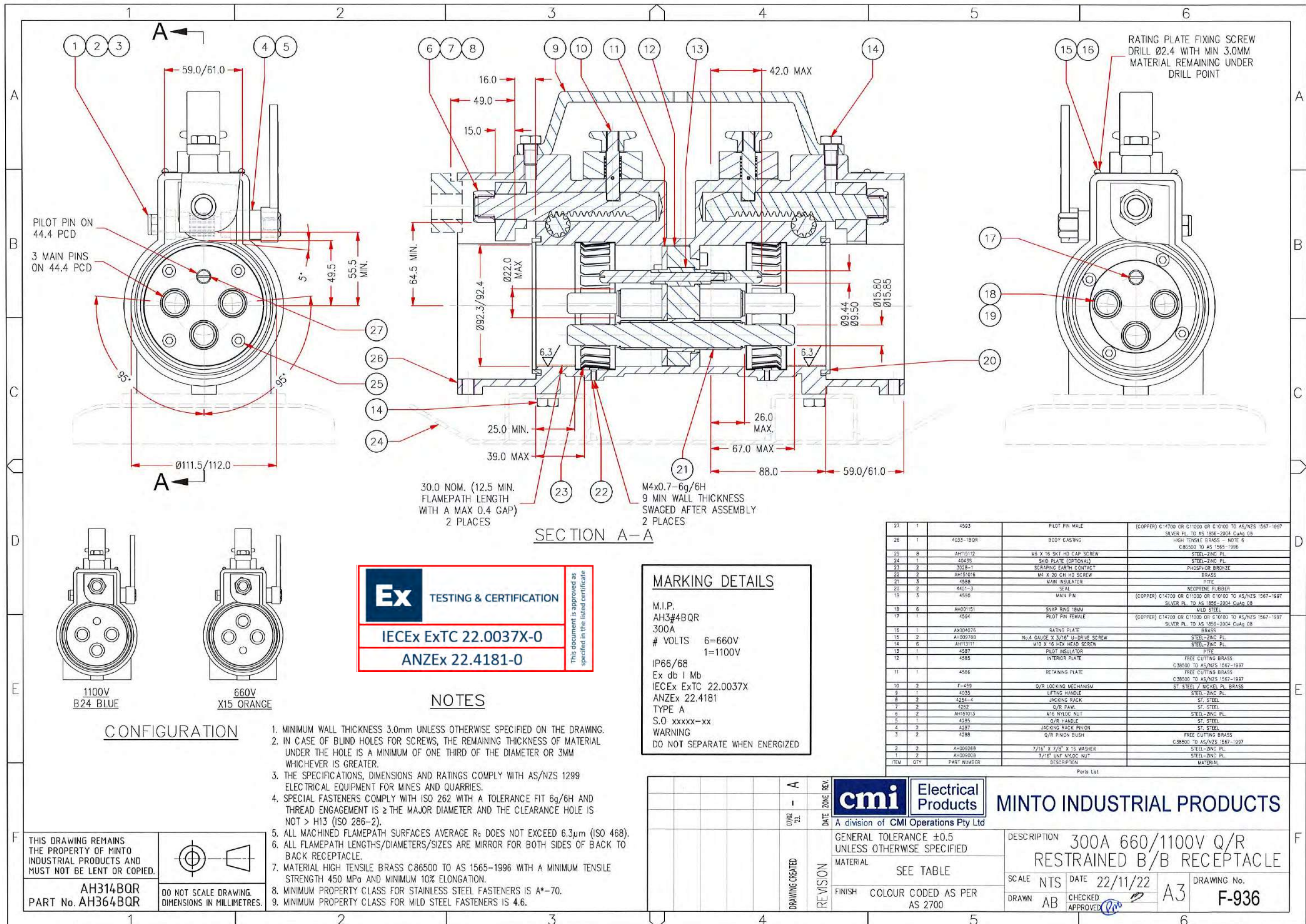


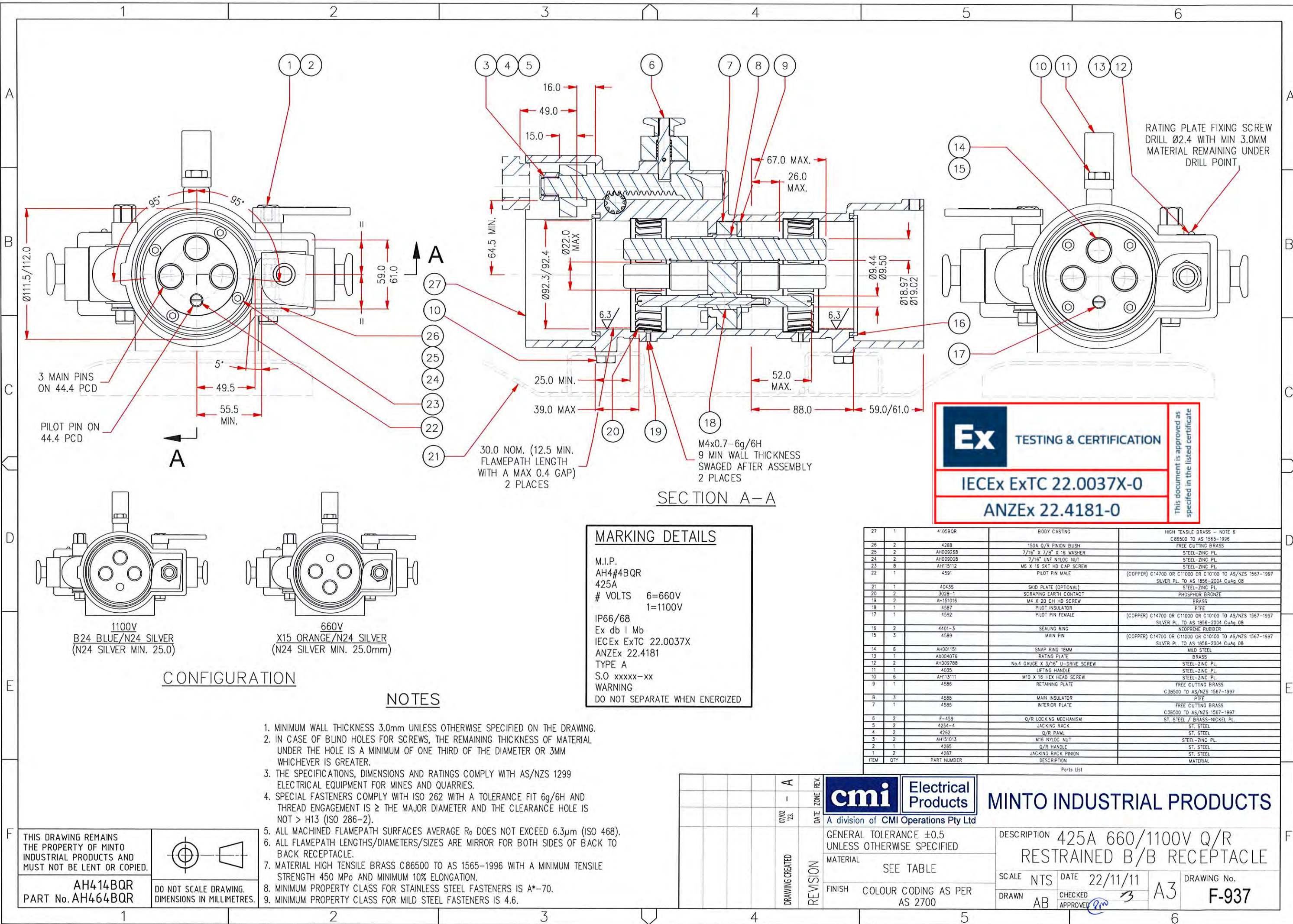
A division of CMI Operations Pty Ltd

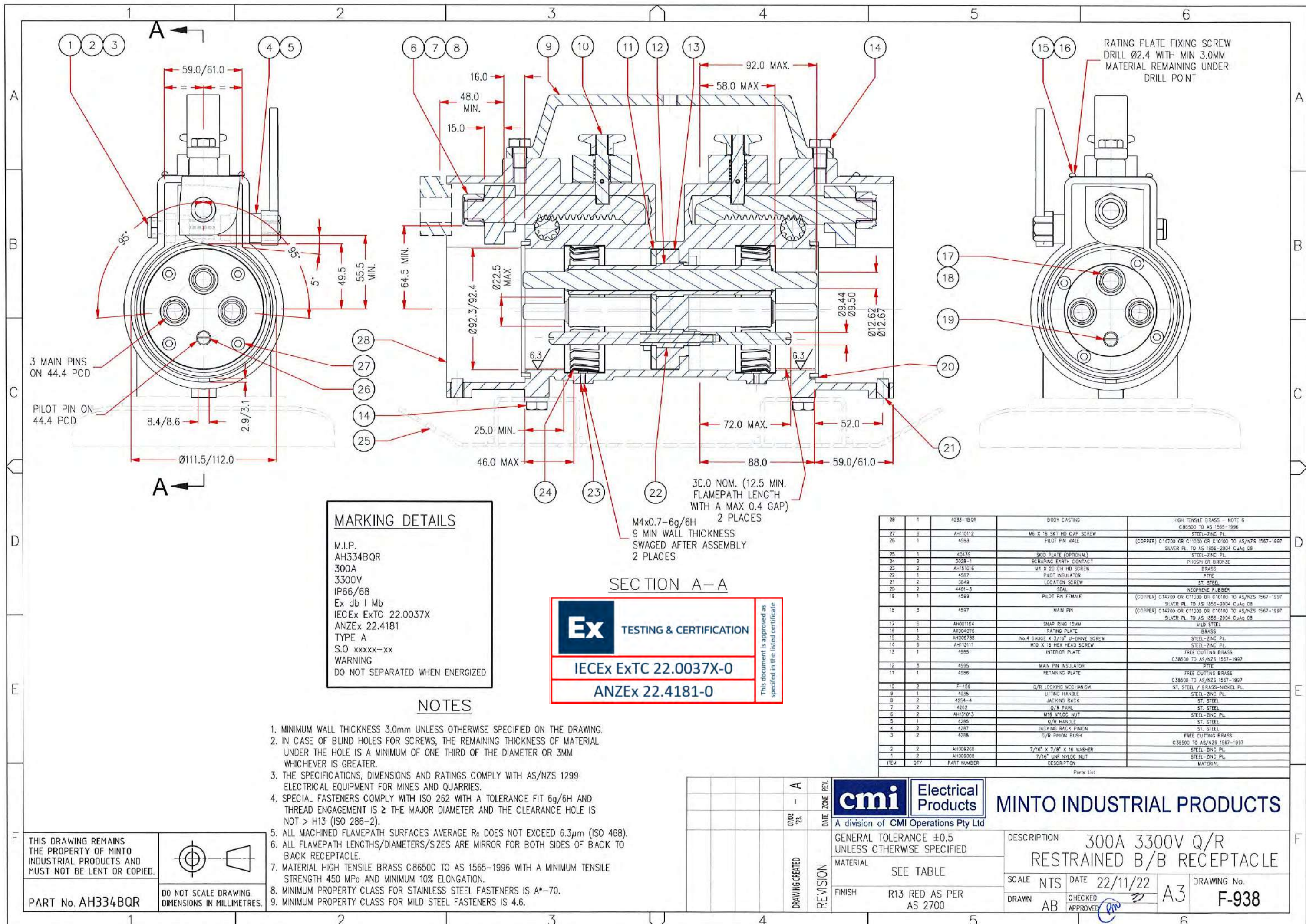
MINTO INDUSTRIAL PRODUCTS

GENERAL TOLERANCE ±0.5
UNLESS OTHERWISE SPECIFIED
MATERIAL SEE TABLE
FINISH COLOUR CODED AS PER
AS 2700

DESCRIPTION 425A 660/1100V
RESTRAINED B/B RECEPTACLE
SCALE NTS DATE 22/11/22
DRAWN EL CHECKED APPROVED
DRAWING No. F-925







MARKING DETAILS

M.I.P.
AH334BQR
300A
3300V
IP66/68
Ex db I Mb
IECEx ExTC 22.0037X
ANZEx 22.4181
TYPE A
S.O xxxxx-xx
WARNING
DO NOT SEPARATED WHEN ENERGIZED

SECTION A-A

Ex TESTING & CERTIFICATION

IECEx ExTC 22.0037X-0

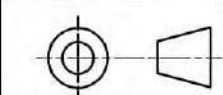
ANZEx 22.4181-0

NOTES

1. MINIMUM WALL THICKNESS 3.0mm UNLESS OTHERWISE SPECIFIED ON THE DRAWING.
2. IN CASE OF BLIND HOLES FOR SCREWS, THE REMAINING THICKNESS OF MATERIAL UNDER THE HOLE IS A MINIMUM OF ONE THIRD OF THE DIAMETER OR 3MM WHICHEVER IS GREATER.
3. THE SPECIFICATIONS, DIMENSIONS AND RATINGS COMPLY WITH AS/NZS 1299 ELECTRICAL EQUIPMENT FOR MINES AND QUARRIES.
4. SPECIAL FASTENERS COMPLY WITH ISO 262 WITH A TOLERANCE FIT 6g/6H AND THREAD ENGAGEMENT IS \geq THE MAJOR DIAMETER AND THE CLEARANCE HOLE IS NOT $>$ H13 (ISO 286-2).
5. ALL MACHINED FLAMEPATH SURFACES AVERAGE R_a DOES NOT EXCEED 6.3 μ m (ISO 468).
6. ALL FLAMEPATH LENGTHS/DIAMETERS/SIZES ARE MIRROR FOR BOTH SIDES OF BACK TO BACK RECEPTACLE.
7. MATERIAL HIGH TENSILE BRASS C86500 TO AS 1565-1996 WITH A MINIMUM TENSILE STRENGTH 450 MPa AND MINIMUM 10% ELONGATION.
8. MINIMUM PROPERTY CLASS FOR STAINLESS STEEL FASTENERS IS A*-70.
9. MINIMUM PROPERTY CLASS FOR MILD STEEL FASTENERS IS 4.6.

THIS DRAWING REMAINS THE PROPERTY OF MINTO INDUSTRIAL PRODUCTS AND MUST NOT BE LENT OR COPIED.

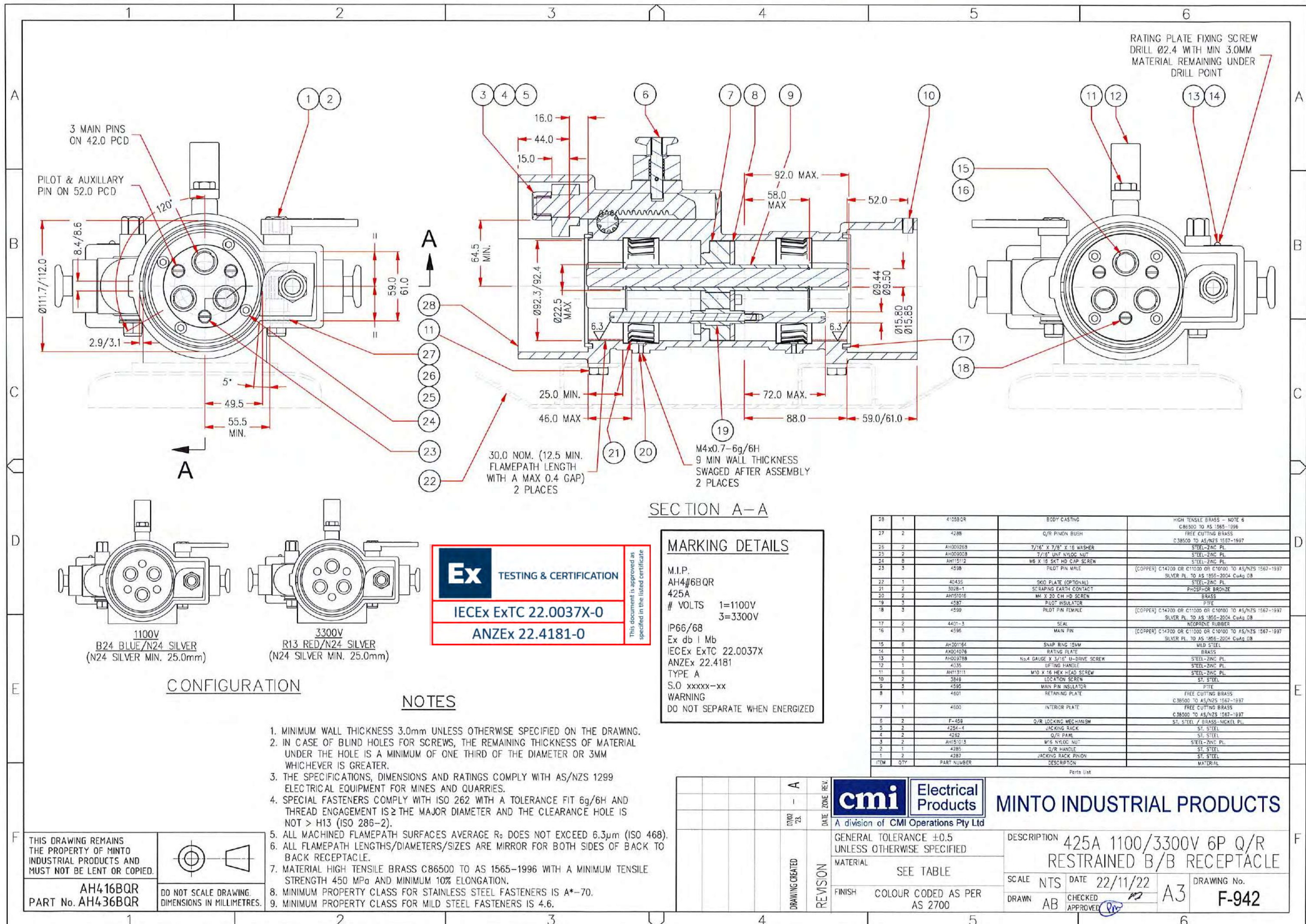
PART No. AH334BQR

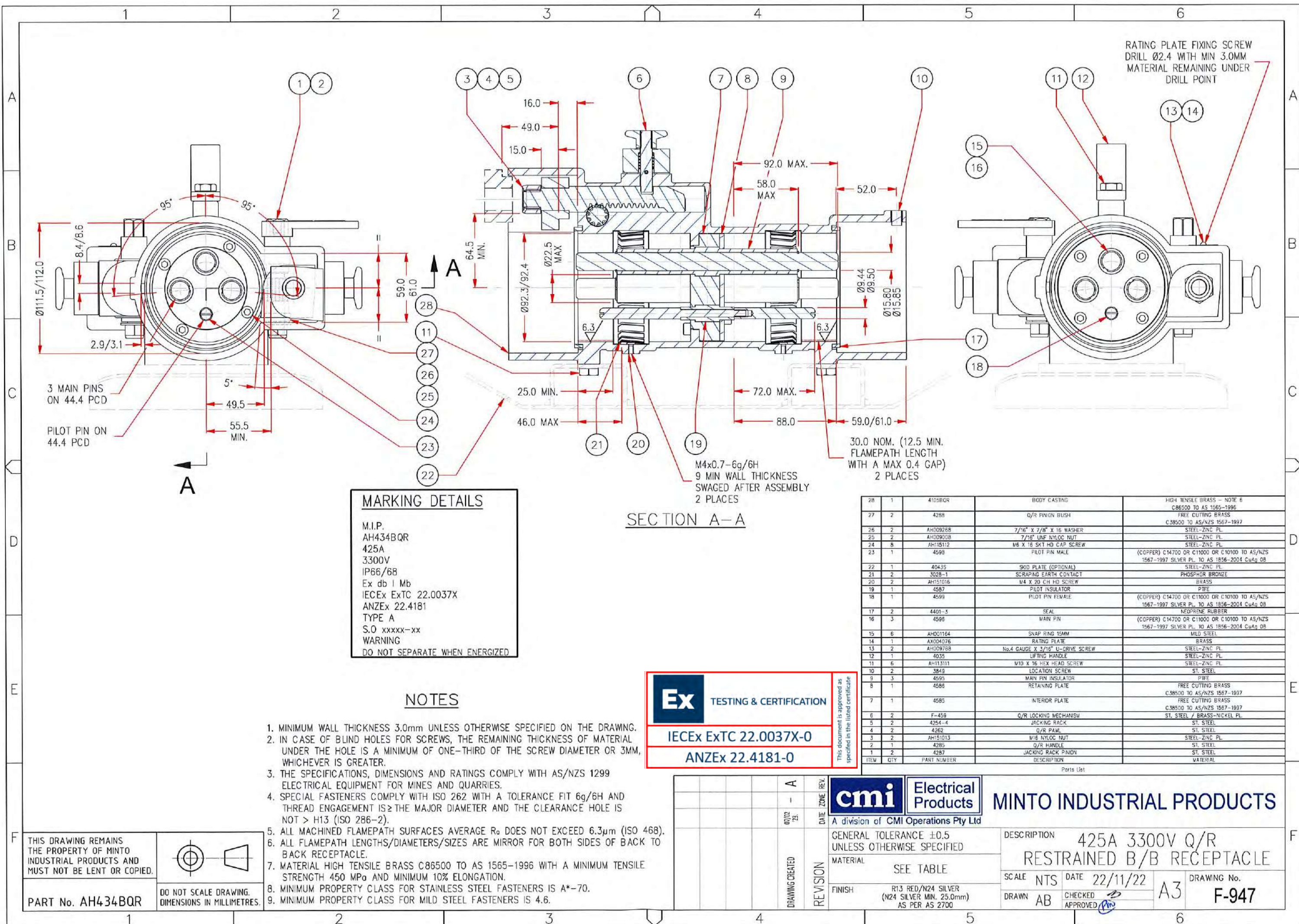


DO NOT SCALE DRAWING. DIMENSIONS IN MILLIMETRES.

28	1	4033-1BQR	BODY CASTING	HIGH TENSILE BRASS - NOTE 6 C86500 TO AS 1565-1996
27	8	AH15112	M6 X 16 SKT HD CAP SCREW	STEEL-ZINC PL
26	1	4568	PILOT PIN MALE	(COPPER) C14700 OR C11000 OR C10100 TO AS/NZS 1567-1997 SILVER PL TO AS 1855-2004 CuAg 08
25	1	40435	SKID PLATE (OPTIONAL)	STEEL-ZINC PL
24	2	3028-1	SCRAPING EARTH CONTACT	PHOSPHOR BRONZE
23	2	AH151016	M4 X 20 CH HD SCREW	BRASS
22	1	4567	PILOT INSULATOR	PTFE
21	1	3849	LOCATION SCREW	ST. STEEL
20	2	4401-3	SEAL	NEOPRENE RUBBER
19	1	4569	PILOT PIN FEMALE	(COPPER) C14700 OR C11000 OR C10100 TO AS/NZS 1567-1997 SILVER PL TO AS 1855-2004 CuAg 08
18	3	4597	MAIN PIN	(COPPER) C14700 OR C11000 OR C10100 TO AS/NZS 1567-1997 SILVER PL TO AS 1855-2004 CuAg 08
17	6	AH001164	SNAP RING 15MM	MILD STEEL
16	1	AX004076	RATING PLATE	BRASS
15	2	AH009788	No.4 GAUGE X 3/16" U-DRIVE SCREW	STEEL-ZINC PL
14	6	AH113111	M10 X 16 HEX HEAD SCREW	STEEL-ZINC PL
13	1	4585	INTERIOR PLATE	FREE CUTTING BRASS C38500 TO AS/NZS 1567-1997
12	3	4595	MAIN PIN INSULATOR	PTFE
11	1	4586	RETAINING PLATE	FREE CUTTING BRASS C38500 TO AS/NZS 1567-1997
10	2	F-459	Q/R LOCKING MECHANISM	ST. STEEL / BRASS-NICKEL PL
9	1	4035	LIFTING HANDLE	STEEL-ZINC PL
8	2	4264-4	JACKING RACK	ST. STEEL
7	2	4262	Q/R PAWL	ST. STEEL
6	2	AH151013	M16 NYLOC NUT	STEEL-ZINC PL
5	1	4285	Q/R HANDLE	ST. STEEL
4	2	4287	JACKING RACK PINION	ST. STEEL
3	2	4286	Q/R PINION BUSH	FREE CUTTING BRASS C38500 TO AS/NZS 1567-1997
2	2	AH009268	7/16" X 7/8" X 16 WASHER	STEEL-ZINC PL
1	2	AH009008	7/16" UNE NYLOC NUT	STEEL-ZINC PL
ITEM	QTY	PART NUMBER	DESCRIPTION	MATERIAL

DATE	07/02/23	REV	A	cmi Electrical Products A division of CMI Operations Pty Ltd	DESCRIPTION 300A 3300V Q/R RESTRAINED B/B RECEPTACLE	SCALE NTS	DATE 22/11/22	DRAWN AB	CHECKED APPROVED	DRAWING No. F-938	
GENERAL TOLERANCE	±0.5 UNLESS OTHERWISE SPECIFIED										
MATERIAL	SEE TABLE										
FINISH	R13 RED AS PER AS 2700										





1		2		3		4		5		6	
A		B		C		D		E		F	
THIS DRAWING REMAINS THE PROPERTY OF MINTO INDUSTRIAL PRODUCTS AND MUST NOT BE LENT OR COPIED.		DO NOT SCALE DRAWING. DIMENSIONS IN MILLIMETRES.		PART No. AH434BQR		1		2		3	
M.I.P. AH434BQR 425A 3300V IP66/68 Ex db I Mb IECEx ExTC 22.0037X ANZEx 22.4181 TYPE A S.O xxxxx-xx WARNING DO NOT SEPARATE WHEN ENERGIZED		MARKING DETAILS		NOTES		1. MINIMUM WALL THICKNESS 3.0mm UNLESS OTHERWISE SPECIFIED ON THE DRAWING. 2. IN CASE OF BLIND HOLES FOR SCREWS, THE REMAINING THICKNESS OF MATERIAL UNDER THE HOLE IS A MINIMUM OF ONE-THIRD OF THE SCREW DIAMETER OR 3MM, WHICHEVER IS GREATER. 3. THE SPECIFICATIONS, DIMENSIONS AND RATINGS COMPLY WITH AS/NZS 1299 ELECTRICAL EQUIPMENT FOR MINES AND QUARRIES. 4. SPECIAL FASTENERS COMPLY WITH ISO 262 WITH A TOLERANCE FIT 6g/6H AND THREAD ENGAGEMENT IS ≥ THE MAJOR DIAMETER AND THE CLEARANCE HOLE IS NOT > H13 (ISO 286-2). 5. ALL MACHINED FLAMEPATH SURFACES AVERAGE Ra DOES NOT EXCEED 6.3µm (ISO 468). 6. ALL FLAMEPATH LENGTHS/DIAMETERS/SIZES ARE MIRROR FOR BOTH SIDES OF BACK TO BACK RECEPTACLE. 7. MATERIAL HIGH TENSILE BRASS C86500 TO AS 1565-1996 WITH A MINIMUM TENSILE STRENGTH 450 MPa AND MINIMUM 10% ELONGATION. 8. MINIMUM PROPERTY CLASS FOR STAINLESS STEEL FASTENERS IS A*-70. 9. MINIMUM PROPERTY CLASS FOR MILD STEEL FASTENERS IS 4.6.		SECTION A-A		M4x0.7-6g/6H 9 MIN WALL THICKNESS SWAGED AFTER ASSEMBLY 2 PLACES	
28		1		4105BQR		BODY CASTING		HIGH TENSILE BRASS - NOTE 8 C86500 TO AS 1565-1996		27	
27		2		4258		Q/R PINION BUSH		FREE CUTTING BRASS C38500 TO AS/NZS 1567-1997		26	
26		2		AH009268		7/16" X 7/8" X 16 WASHER		STEEL-ZINC PL		25	
25		2		AH009008		7/16" UNF NYLOC NUT		STEEL-ZINC PL		24	
24		8		AH151112		M6 X 16 SKT HD CAP SCREW		STEEL-ZINC PL		23	
23		1		4598		PILOT PIN MALE		(COPPER) C14700 OR C11000 OR C10100 TO AS/NZS 1567-1997 SILVER PL. TO AS 1856-2004 CuAg 08		22	
22		1		40435		SKID PLATE (OPTIONAL)		STEEL-ZINC PL		21	
21		2		3028-1		SCRAPING EARTH CONTACT		PHOSPHOR BRONZE		20	
20		2		AH151016		M4 X 20 CH HD SCREW		BRASS		19	
19		1		4587		PILOT INSULATOR		PTFE		18	
18		1		4599		PILOT PIN FEMALE		(COPPER) C14700 OR C11000 OR C10100 TO AS/NZS 1567-1997 SILVER PL. TO AS 1856-2004 CuAg 08		17	
17		2		4401-3		SEAL		NEOPRENE RUBBER		16	
16		3		4598		MAIN PIN		(COPPER) C14700 OR C11000 OR C10100 TO AS/NZS 1567-1997 SILVER PL. TO AS 1856-2004 CuAg 08		15	
15		6		AH001164		SNAP RING 15MM		MILD STEEL		14	
14		1		AX004076		RATING PLATE		BRASS		13	
13		2		AH009788		No.4 GAUGE X 3/16" U-DRIVE SCREW		STEEL-ZINC PL		12	
12		1		4035		LIFTING HANDLE		STEEL-ZINC PL		11	
11		6		AH113111		M10 X 16 HEX HEAD SCREW		STEEL-ZINC PL		10	
10		2		3849		LOCATION SCREW		ST. STEEL		9	
9		3		4595		MAIN PIN INSULATOR		PTFE		8	
8		1		4586		RETAINING PLATE		FREE CUTTING BRASS C38500 TO AS/NZS 1567-1997		7	
7		1		4585		INTERIOR PLATE		FREE CUTTING BRASS C38500 TO AS/NZS 1567-1997		6	
6		2		F-458		Q/R LOCKING MECHANISM		ST. STEEL / BRASS-NICKEL PL		5	
5		2		4254-4		JACKING RACK		ST. STEEL		4	
4		2		4262		Q/R PAWL		ST. STEEL		3	
3		2		AH151013		M16 NYLOC NUT		STEEL-ZINC PL		2	
2		1		4285		Q/R HANDLE		ST. STEEL		1	
1		2		4287		JACKING RACK PINION		ST. STEEL		ITEM	
QTY		PART NUMBER		DESCRIPTION		MATERIAL		PARTS LIST			
						</					

Instructions for 300/425 AMP 660/1100/3300 VOLT Restrained Range

TRP2

Catalogue Number	Description
AF3#4&@*	300A 660/1100V Restrained Plug
AF3#6&@*	300A 1100/3300V 6P Restrained Plug
AF334%@*	300A 3300V Restrained Plug
AF4#4&@*	425A 660/1100V Restrained Plug
AF4#6%@*	425A 1100/3300V 6P Restrained Plug
AF434%@*	425A 3300V Restrained Plug.
AG3#4B	300A 660/1100/3300V Restrained Receptacle
AG3#4BQR	300A 660/1100/3300V Q/R Restrained Receptacle
AG3#6B	300A 1100/3300V 6P Restrained Receptacle
AG3#6BQR	300A 1100/3300V Q/R 6P Restrained Receptacle
AG334B	300A 3300V Restrained Receptacle
AG334BQR	300A 3300V Q/R Restrained Receptacle
AG4#4B	425A 660/1100V Restrained Receptacle
AG4#4BQR	425A 660/1100V Q/R Restrained Receptacle
AG4#6BQR	425A 1100/3300V Q/R 6P Restrained Receptacle
AG434BQR	425A 3300V Q/R Restrained Receptacle
AH3#4B	300A 660/1100V Restrained Back to Back Receptacle
AH3#4BQR	300A 660/1100V Q/R Restrained Back to Back Receptacle
AH3#6B	300A 1100/3300V 6P Restrained Back to Back Receptacle
AH3#6BQR	300A 1100/3300V Q/R 6P Restrained Back to Back Receptacle
AH334B	300A 3300V Restrained Back to Back Receptacle
AH334BQR	300A 3300V Q/R Restrained Back to Back Receptacle
AH4#4B	425A 660/1100V Restrained Back to Back Receptacle
AH4#4BQR	425A 660/1100V Q/R Restrained Back to Back Receptacle
AH4#6BQR	425A 1100/3300V Q/R 6P Restrained Back to Back Receptacle
AH434BQR	425A 3300V Q/R Restrained Back to Back Receptacle
AR3#1R@	300A 660/1100V Restrained Dummy Plug
AR3#6R@	300A 1100V/3300 6P Restrained Dummy Plug
AR331S@	300A 3300V Restrained Dummy Plug
AR4#1R@	425A 660/1100V Restrained Dummy Plug
AR4#6R@	425A 1100V/3300 6P Restrained Dummy Plug
AR431S@	425A 3300V Restrained Dummy Plug

Note:

Marking:

- # Volts: 6=660V, 1=1100V, 3=3300V
- % Interior: S = Solid DMC, T = Teflon/Stainless
- & Interior: R = Rubber, T = Teflon/Stainless
- @ Nose Cone: S=ST. Steel, Blank=Bronze.
- * Gland: 3=Small, 4=large.

This brochure is distributed with the understanding that the authors and editors are not responsible for the results of any actions taken on the basis of the information in this work, or any errors or omission. Further, Minto Industrial Products is not engaged in rendering professional services. Minto Industrial Products expressly disclaims all and any liability to any person in respect of anything and of the consequences of anything done or omitted to be done by any such person in reliance whether whole or partial of the whole or any part of the contents of this publication. All rights reserved. No part of this work covered by copyright may be reproduced or copied in any form or by any means without the written permission of Minto Industrial Products.

TRP-2 300/425A Restrained Termination & Maintenance Instruction Page 1 of 4
Rev J 20230331



Installation

- Confirm components suitable for application e.g. thimbles and grommets suitable for the conductors and cable.
- Plug fitting cable preparation.
 1. Slide the gland cap, grommet and plug body along the cable.
 2. Prepare the cable to the dimensions given in the strip back table.
 3. Crimp or solder the thimbles to the phase, pilot and earth cores.
- **Plug fitting**
 4. Fit the conductors to the appropriate location securing in place with screw through socket where appropriate.
 5. Assemble the plug, ensuring the interior rotation conforms to AS/NZS1299.
 6. Then fit dust cap (F-264L). Care should be taken not to damage the earth sleeve flamepath.
 7. Slide the grommet into position and bolt the gland cap firmly to the body.
 8. Note: The certified drawings form a part of the user instructions. Refer to them for further details.
- **Receptacle fitting**
 9. For Receptacle mounting dimensions refer to AS/NZS1299. The flange flamepath used to assemble the receptacle and Exd enclosure with minimum width 12.5mm and maximum gap 0.4mm.
 10. Attach to enclosure via special fasteners.
 11. The special fasteners and/or nuts shall be minimum grade 4.6 (yield stress 240MPa) or for stainless steel minimum grade A*-70 (Yield stress 450MPa)
- **Connection of Protective Earthing Conductors**
 - This range of plugs and receptacles has facility for earthing conductors up to 95 mm²
 - It is the responsibility of the installer to determine and fit the correct sized earth conductors

Use

- Isolate power before connecting or disconnecting.

Assembly

- Ensure sockets are clean and serviceable.
- Correct pin alignment.
- Insert plug using receptacle operating mechanism.
- NB. For quick release mechanism, ensure the locking button is fully home.

Disassembly

- To remove plug from receptacle, utilise the operating mechanism.
- NB. For quick release, lift the locking button first.
- Fit dust cover to plug and receptacle.

Conditions of Use

- Some flameproof joints (flamepath) have dimensions that are different than the values given in table 1 of IEC60079.1. Refer to the manufacture's drawings for details.
- The special fasteners used to assemble the plug and gland shall be minimum grade 4.6 (yield stress 240MPa) or for stainless steel minimum grade A*-70 (Yield stress 450MPa).

This brochure is distributed with the understanding that the authors and editors are not responsible for the results of any actions taken on the basis of the information in this work, or any errors or omission. Further, Minto Industrial Products is not engaged in rendering professional services. Minto Industrial Products expressly disclaims all and any liability to any person in respect of anything and of the consequences of anything done or omitted to be done by any such person in reliance whether whole or partial of the whole or any part of the contents of this publication. All rights reserved. No part of this work covered by copyright may be reproduced or copied in any form or by any means without the written permission of Minto Industrial Products.

TRP-2 300/425A Restrained Termination & Maintenance Instruction Page 2 of 4
Rev J 20230331



minto industrial products



Aflext Cables



XLPE cables



HARTLAND CABLES



Global-Mark.com.au®

Maintenance

- Inspection shall include cleanliness and compliance with certification documentation.
- Check as per AS/NZS 2290.1

Overhaul and Repair

- To be carried out by suitable workshop.
- It is recommended that the equipment is overhauled at intervals that do not exceed the requirements of AS/NZS2290.1.

Certification Details:

Certified to: IEC 60079-0:2017; IEC 60079-1:2015;
AS/NZS 1299:2009 (incorporating amendment No.1)

Certificate of Conformity: IECEX ExTC 22.0037X and ANZEx 22.4181

Type of Protection: Ex db I Mb

Type: (AS/NZS 1299) Type A

Ingress Protection: IP66/68 (2 metres for 30 minutes) for Restrained Plug, Restrained Back to Back Receptacle, Restrained Receptacle, Gland Adapter.
IP66 only for Dummy Plug

Certification Nameplate Details:

TYPICAL 300/425A MOUNTING BRACKET RATING PLATE DETAILS	TYPICAL 300/425A RESTRAINED PLUG RATING PLATE DETAILS	TYPICAL 300/425A 6 PIN RESTRAINED PLUG RATING PLATE DETAILS
CMI AV3 300/425A Ex db I Mb IECEX ExTC 22.0037X ANZEx 22.4181 TYPE A BATCH. xxxxx	M.I.P. AF%@* & AMPS 3 = 300A 4 = 425A # VOLTS 6 = 660V 1 = 1100V 3 = 3300V % INTERIOR R = RUBBER S = SOLID DMC T = TEFLON/STAINLESS @ NOSE CONE S = St, Steel BLANK = BRONZE * GLAND 3 = SMALL 4 = LARGE IP66/68 Ex db I Mb IECEX ExTC 22.0037X ANZEx 22.4181 TYPE A S.O. xxxxx-xx WARNING DO NOT SEPARATE WHEN ENERGIZED	M.I.P. AF%@* & AMPS 3 = 300A 4 = 425A # VOLTS 1 = 1100V 3 = 3300V % INTERIOR R = RUBBER T = TEFLON/STAINLESS @ NOSE CONE S = St, Steel BLANK = BRONZE * GLAND 3 = SMALL 4 = LARGE IP66/68 Ex db I Mb IECEX ExTC 22.0037X ANZEx 22.4181 TYPE A S.O. xxxxx-xx WARNING DO NOT SEPARATE WHEN ENERGIZED



TYPICAL 300/425A RESTRAINED PLUG (INT GLAND) RATING PLATE DETAILS	TYPICAL 300/425A RESTRAINED RECEPTACLE RATING PLATE DETAILS	TYPICAL 300/425A 6 PIN RESTRAINED RECEPTACLE RATING PLATE DETAILS
<p>M.I.P. AF&#4S & AMPS 3 = 300A 4 = 425A # VOLTS 6 = 660V 1 = 1100V</p> <p>IP66/68 Ex db I Mb IECEX ExTC 22.0037X ANZEx 22.4181 TYPE A S.O. xxxxx-xx WARNING DO NOT SEPARATE WHEN ENERGIZED</p>	<p>M.I.P. AG&#4B & AMPS 3 = 300A 4 = 425A # VOLTS 6 = 660V 1 = 1100V 3 = 3300V</p> <p>IP66/68 Ex db I Mb IECEX ExTC 22.0037X ANZEx 22.4181 TYPE A S.O. xxxxx-xx WARNING DO NOT SEPARATE WHEN ENERGIZED</p>	<p>M.I.P. AG&#6B & AMPS 3 = 300A 4 = 425A # VOLTS 1 = 1100V 3 = 3300V</p> <p>IP66/68 Ex db I Mb IECEX ExTC 22.0037X ANZEx 22.4181 TYPE A S.O. xxxxx-xx WARNING DO NOT SEPARATE WHEN ENERGIZED</p>
TYPICAL 300/425A RESTRAINED BACK TO BACK RECEPTACLE RATING PLATE DETAILS	TYPICAL 300/425A 6 PIN RESTRAINED BACK TO BACK RECEPTACLE RATING PLATE DETAILS	TYPICAL 300/425A RESTRAINED DUMMY PLUG RATING PLATE DETAILS
<p>M.I.P. AH&#4B & AMPS 3 = 300A 4 = 425A # VOLTS 6 = 660V 1 = 1100V 3 = 3300V</p> <p>IP66/68 Ex db I Mb IECEX ExTC 22.0037X ANZEx 22.4181 TYPE A S.O. xxxxx-xx WARNING DO NOT SEPARATE WHEN ENERGIZED</p>	<p>M.I.P. AH&#6B & AMPS 3 = 300A 4 = 425A # VOLTS 1 = 1100V 3 = 3300V</p> <p>IP66/68 Ex db I Mb IECEX ExTC 22.0037X ANZEx 22.4181 TYPE A S.O. xxxxx-xx WARNING DO NOT SEPARATE WHEN ENERGIZED</p>	<p>M.I.P. AR&#1% & AMPS 3 = 300A 4 = 425A # VOLTS 6 = 660V 1 = 1100V 3 = 3300V % INTERIOR R = RUBBER @ NOSE CONE S = SOLID DMC S = St, Steel BLANK = BRONZE</p> <p>IP66 Ex db I Mb IECEX ExTC 22.0037X ANZEx 22.4181 TYPE A S.O. xxxxx-xx WARNING DO NOT SEPARATE WHEN ENERGIZED</p>
TYPICAL 300/425A 6 PIN RESTRAINED DUMMY PLUG RATING PLATE DETAILS		
<p>M.I.P. AR&#6R@ & AMPS 3 = 300A 4 = 425A # VOLTS 1 = 1100V 3 = 3300V @ NOSE CONE S = St, Steel BLANK = BRONZE</p> <p>IP66 Ex db I Mb IECEX ExTC 22.0037X ANZEx 22.4181 TYPE A S.O. xxxxx-xx WARNING DO NOT SEPARATE WHEN ENERGIZED</p>		

Refer to Instruction TRP-2-2 for additional detailed instructions

This brochure is distributed with the understanding that the authors and editors are not responsible for the results of any actions taken on the basis of the information in this work, or any errors or omission. Further, Minto Industrial Products is not engaged in rendering professional services. Minto Industrial Products expressly disclaims all and any liability to any person in respect of anything and of the consequences of anything done or omitted to be done by any such person in reliance whether whole or partial of the whole or any part of the contents of this publication. All rights reserved. No part of this work covered by copyright may be reproduced or copied in any form or by any means without the written permission of Minto Industrial Products.

TRP-2 300/425A Restrained Termination & Maintenance Instruction Page 4 of 4
Rev J 20230331



minto industrial products



Afex Cables



XLPE cables



HARTLAND CABLES



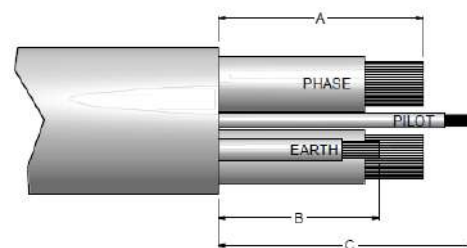
Global-Mark.com.au®

Additional Instructions for 300/425 AMP 660/1100/3300 VOLT Restrained Range

TRP-2-2

Cable Strip Back Dimensions

Strip Back Dimensions (mm)			
	A (Phase)	B (Earth)	C (Pilot)
AF314R3 / AF364R3 / AF414R3 / AF464R3	110	155	155
AF314R4 / AF364R4 / AF414R4 / AF464R4	130	180	120
AF334S3 / AF434S3 / AF316R3 / AF336R3 AF416R3 / AF436R3	128	120	130
AF334S4 / AF434S4 / AF316R4 / AF336R4 AF416R4 / AF436R4	158	150	100
AF314S / AF364S	145	165	120



Note- Cables with semi conductive phase screening shall have the semi conductive screen removed back to the outer sheath.

Fitting of Cables

Note: The torque specified in the certification drawings is for the sealing test where the gland is tightened onto a steel mandrel.

- Cable fitting and testing shall be in compliance with AS/NZS 1747
- AS/NZS 1747:2022 sets out the method of cable installation and subsequent testing.
- Selection of thimbles
 - Thimbles shall be sized so that the internal diameter of the thimble is within 1mm of the stripped conductor diameter.
- Grommet sizing
 - Grommets shall be sized to the cable being used
 - The grommet shall preferably be a conformal fit that fits tightly onto the cable.
 - Grommets that fit loosely, will prevent the cable been effectively sealed in the gland.
- For guidance only, CMI recommend minimum torque settings for fitting cables to the range of 300/425A Restrained Plugs and Receptacle, Gland & Bracket
 - This recommended minimum torque for the gland bolt / screw is: 18NM

Note:

- A suitable calibrated Torque Wrench shall be used for this process
- Initial testing of cable installation to gland:
 - Undertake a "Twist Test" as outlined in AS/NZS 1747:2022.
 - Undertake other tests as outlined in AS/NZS 1747:2022.
- Testing of plug / cable complete.
- Undertake the required tests as outlined in AS/NZS 1747:2022.

Fitting of Sockets to Cable Thimbles

- The following maximum torques shall be applied when screwing the sockets to the cable thimbles
 - Main (Phase) Sockets
 - 6.5 ~ 8Nm torque
 - Pilot Socket
 - 2.5 ~ 3 Nm torque

Note:

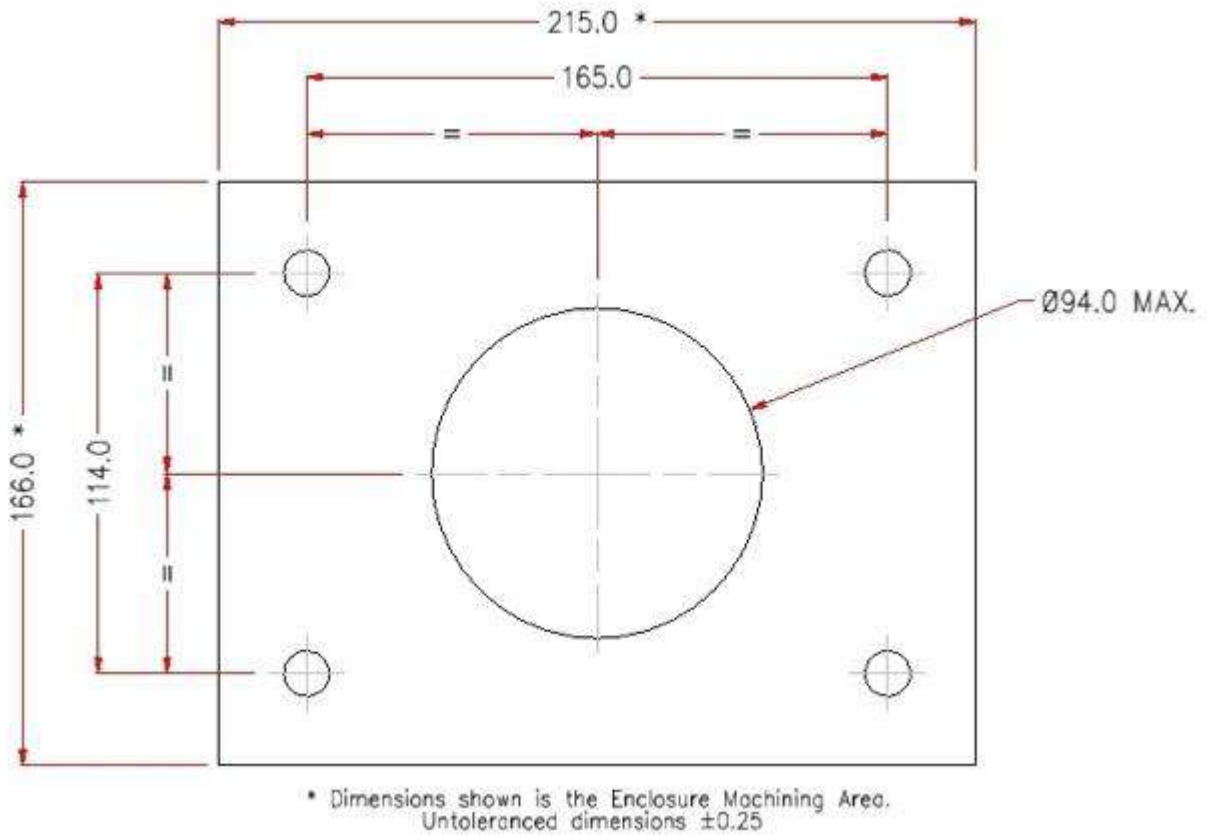
- A suitable calibrated Torque Wrench (recommended ¼ inch size) shall be used for this process

This brochure is distributed with the understanding that the authors and editors are not responsible for the results of any actions taken on the basis of the information in this work, or any errors or omission. Further, Minto Industrial Products is not engaged in rendering professional services. Minto Industrial Products expressly disclaims all and any liability to any person in respect of anything and of the consequences of anything done or omitted to be done by any such person in reliance whether whole or partial of the whole or any part of the contents of this publication. All rights reserved. No part of this work covered by copyright may be reproduced or copied in any form or by any means without the written permission of Minto Industrial Products.

TRP-2-2 300/425A Restrained Termination & Maintenance Instruction Additional Instructions Page 1 of 2

Rev B 20230331

300/425A Receptacle Mounting Details



This brochure is distributed with the understanding that the authors and editors are not responsible for the results of any actions taken on the basis of the information in this work, or any errors or omission. Further, Minto Industrial Products is not engaged in rendering professional services. Minto Industrial Products expressly disclaims all and any liability to any person in respect of anything and of the consequences of anything done or omitted to be done by any such person in reliance whether whole or partial of the whole or any part of the contents of this publication. All rights reserved. No part of this work covered by copyright may be reproduced or copied in any form or by any means without the written permission of Minto Industrial Products.

TRP-2-2 300/425A Restrained Termination & Maintenance Instruction Additional Instructions Page 2 of 2

Rev B 20230331