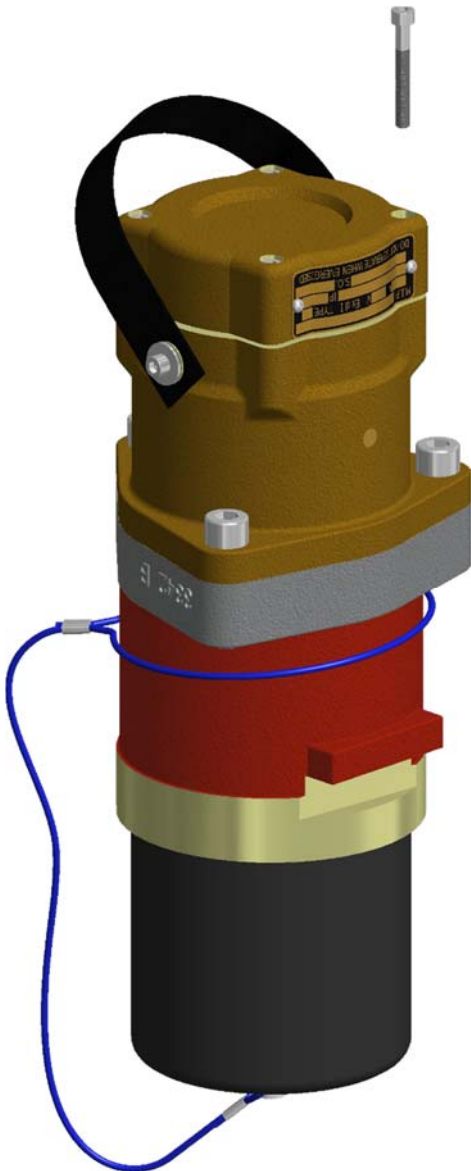


CMI Multi Purpose Plug- 660V /1kV/3.3kV 300A/425A Restrained Plug

This unit is designed to incorporate specialist signalling and indication electronic modules
Examples are:

- ***Nodes***
- ***Phase rotation/ voltage indication***



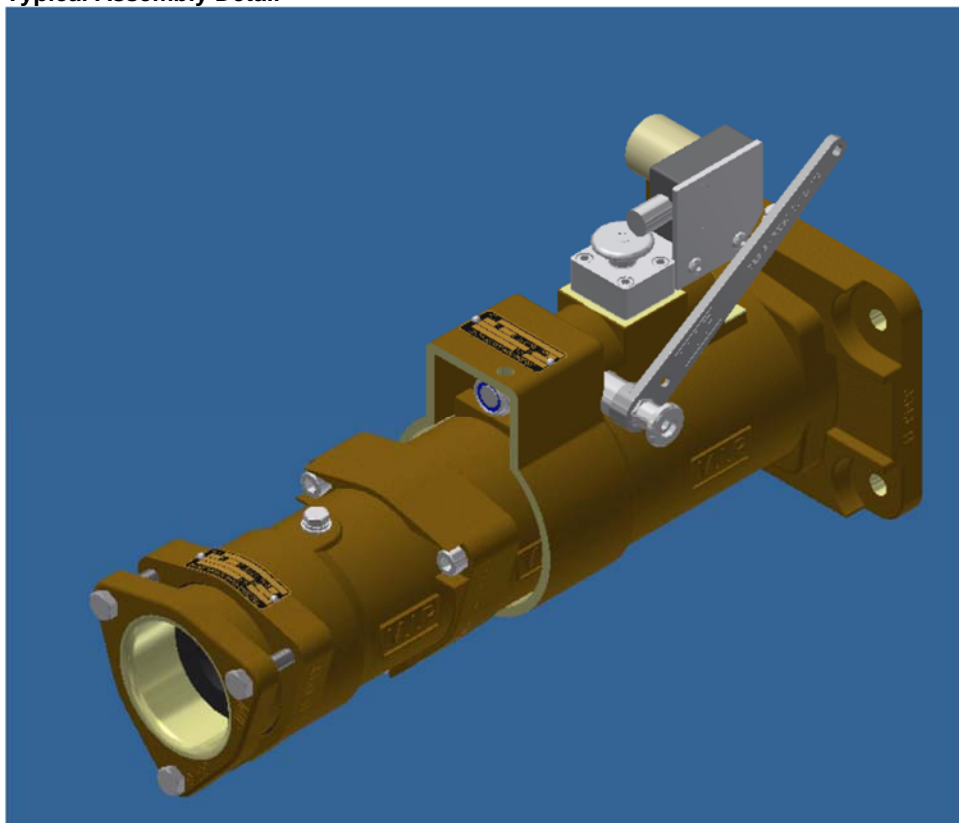
This brochure is distributed with the understanding that the authors and editors are not responsible for the results of any actions taken on the basis of the information in this work, or any errors or omission. Further, Minto Industrial Products is not engaged in rendering professional services. Minto Industrial Products expressly disclaims all and any liability to any person in respect of anything and of the consequences of anything done or omitted to be done by any such person in reliance whether whole or partial of the whole or any part of the contents of this publication. All rights reserved. No part of this work covered by copyright may be reproduced or copied in any form or by any means without the written permission of Minto Industrial Products.

Certification Details:

Certified to: IEC 60079--0:2011(Incorporating Corrigendum 1 & 2) IEC 60079--1:2007 (Incorporating Corrigendum 1)
 AS/NZS 1299:2009 (incorporating amendment No.1)
 Certificate of Conformity: IECEx TSA 15.0003U; ANZEx 15.3001U
 Type of Protection: Ex d I Mb
 Type (AS/NZS 1300) Type A
 Ingress Protection: IP 66 (When coupled to a receptacle)

Catalogue Number	Description
AM311R	300AMP 1100 VOLT 4 PIN MULTI PURPOSE PLUG EMPTY
AM361R	300AMP 660 VOLT 4 PIN MULTI PURPOSE PLUG EMPTY
AM331S	300AMP 3300 VOLT 4 PIN MULTI PURPOSE PLUG EMPTY
AM316R	300AMP 1100 VOLT 6 PIN MULTI PURPOSE PLUG EMPTY
AM336R	300AMP 3300 VOLT 6 PIN MULTI PURPOSE PLUG EMPTY
AM411R	425AMP 1100 VOLT 4 PIN MULTI PURPOSE PLUG EMPTY
AM461R	425AMP 660 VOLT 4 PIN MULTI PURPOSE PLUG EMPTY
AM431S	425AMP 3300 VOLT 4 PIN MULTI PURPOSE PLUG EMPTY
AM416R	425AMP 1100 VOLT 6 PIN MULTI PURPOSE PLUG EMPTY
AM436R	425AMP 3300 VOLT 6 PIN MULTI PURPOSE PLUG EMPTY

Typical Assembly Detail



This brochure is distributed with the understanding that the authors and editors are not responsible for the results of any actions taken on the basis of the information in this work, or any errors or omission. Further, Minto Industrial Products is not engaged in rendering professional services. Minto Industrial Products expressly disclaims all and any liability to any person in respect of anything and of the consequences of anything done or omitted to be done by any such person in reliance whether whole or partial of the whole or any part of the contents of this publication. All rights reserved. No part of this work covered by copyright may be reproduced or copied in any form or by any means without the written permission of Minto Industrial Products.



A division of CMI Operations Pty Ltd
ABN 87 088 279 270

□ **Sydney** 18-20 Railway Road Meadowbank NSW 2114
Postal Address: Locked Bag M3 Meadowbank NSW 2114
Telephone: (02) 9807 6155 Facsimile: (02) 9808 2033

□ **Melbourne** 3-5 Dissik Street Cheltenham VIC 3192
Telephone: (03) 9532 1233 Facsimile: (03) 9553 3502

□ **Perth** 36 Division Street Welshpool WA 6106
Telephone: (08) 9358 1788 Facsimile: (08) 9358 1733

□ **Brisbane** 485A Zillmere Road Zillmere QLD 4034
Postal Address: PO Box 642 Virginia QLD 4014
Telephone: (07) 3863 0749 Facsimile: (07) 3863 0795

□ **Rockhampton** Shop3, 76 Hollingsworth St
North Rockhampton QLD 4701
Postal Address: PO Box 1124 North Rockhampton QLD 4701
Telephone: (07) 4921 0978 Facsimile: (07) 4921 0981

For all account enquiries **Phone** (02) 8878 1320 **Fax** (02) 9808 4977

Installation of Multipurpose Plug into a Restrained Receptacle or Back to Back Coupler

- Ensure sockets are clean and serviceable.
- Correct pin alignment.
- Insert plug using receptacle operating mechanism.
NB. For quick release mechanism, ensure the locating button is fully home.

Removal of Multipurpose Plug from a Restrained Receptacle or Back to Back Coupler

- To remove plug from receptacle utilise the operating mechanism.
NB. For quick release, lift the locking button first.
- Fit dust cover to plug and receptacle.

Certification Nameplate Details:

TYPICAL RATING PLATE DETAILS		LEGEND	
CMI MULTI PURPOSE PLUG AM@#\$%* IP66 Ex db I Mb ANZEx 15.3001U DO NOT SEPARATE WHEN ENERGIZED	TYPE "A" IECEx TSA 15.0003U S.O xxxxx-xx	@ = AMPS 3 = 300A 4 = 425A	\$ = PINS 1 = 4 6 = 6
		# = VOLTS 6 = 660V 1 = 1100V 3 = 3300V	% = INTERIOR R = RUBBER S = SOLID
		* = NOSE CONE S = STAINLESS STEEL (BLANK) = BRASS	

"Schedule of Limitations" for Ex component:

1. The CMI 300 A/425 A, 660V/1100 V/3300 V restrained multi-purpose plugs are intended to be fitted to Restrained Receptacles and Restrained Receptacles with cable gland and bracket of 300A/425 A, 660 V/1100 V/3300 V range certified under IECEx scheme certificate IECEx TSA 13.0005X
2. When the CMI 300 A/425 A, 660V/1100 V/3300 V restrained multi-purpose plug is engaged with CMI receptacle, the assembly is locked by jacking spindle or quick release locking mechanism. Further the plug is marked with the following text:
"DO NOT SEPARATE WHEN ENERGISED".
3. Interior insulating material has the maximum continuous operating temperature of 80 °C
4. Ambient temperature range is between -20 °C and + 40 °C
5. Internal components must be fixed and must be placed in any arrangement providing that an area of at least 20 % of each cross sectional area remains free to permit an unimpeded gas flow.
6. Oil-filled circuit breakers and contractors shall not be used.
7. The pilot sockets variants: with one or three pilot sockets connections.
8. When multi-purpose plug is coupled with CMI receptacle 300 A/425 A, 660V/1100 V/3300 V, the assembly can be rated at IP66.
9. The width of flameproof cylindrical joint between multi-purpose plug and CMI restrained receptacle 300 A/425 A, 660V/1100 V/3300 V or back to back receptacle is in accordance with AS/NZS 1299 prescribed dimensions which are greater than 25 mm when plug is fully engaged and the maximum gap is 0.4 mm.
10. The width of flameproof flange joint between the receptacle and the Ex d enclosure shall be with flamepath minimum width $L = 12.5$ mm and maximum gap $i = 0.4$ mm. Refer to the manufacturer's instruction TRP-2 for details.

Maintenance

- Inspection shall include cleanliness and compliance with certification documentation.
- Check as per AS/NZS2290.1

Overhaul and Repair

- To be carried out by suitable workshop.

Fasteners

- The special fasteners used to assemble the plug and gland shall be minimum grade 4.6 (yield stress 240MPa) or for stainless steel minimum grade A*-70 (Yield stress 450MPa).

Operating Temperature

- Operating temperature range -20°C to +40°C and average temperature over 24 hours is not to exceed 35°C

This brochure is distributed with the understanding that the authors and editors are not responsible for the results of any actions taken on the basis of the information in this work, or any errors or omission. Further, Minto Industrial Products is not engaged in rendering professional services. Minto Industrial Products expressly disclaims all and any liability to any person in respect of anything and of the consequences of anything done or omitted to be done by any such person in reliance whether whole or partial of the whole or any part of the contents of this publication. All rights reserved. No part of this work covered by copyright may be reproduced or copied in any form or by any means without the written permission of Minto Industrial Products.

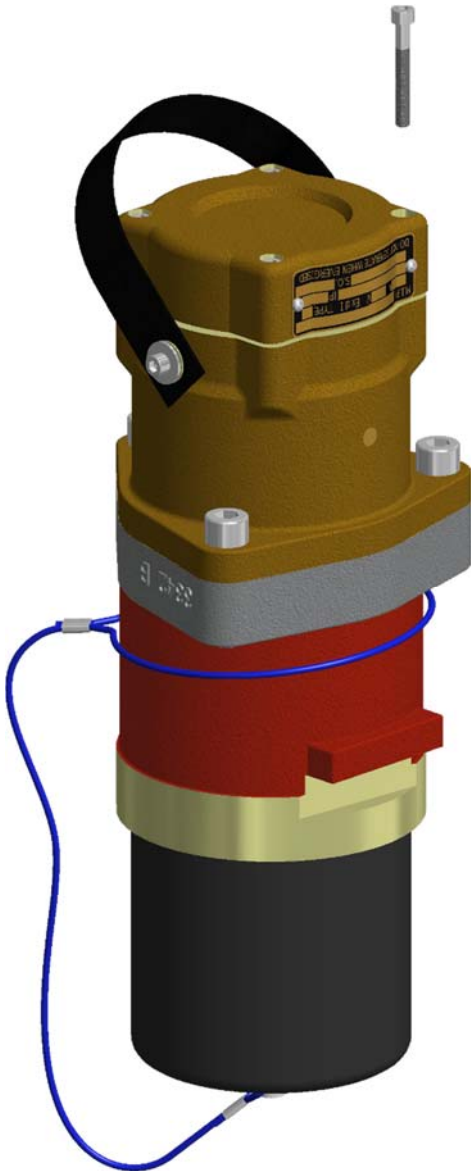
MPP01
Rev C 14/11/2017



CMI Multi Purpose Plug- 660V /1kV/3.3kV 300A/425A Restrained Plug – Becker Node

This unit is designed to incorporate specialist signalling and indication electronic modules

- This model incorporates a Becker signalling node



This brochure is distributed with the understanding that the authors and editors are not responsible for the results of any actions taken on the basis of the information in this work, or any errors or omission. Further, Minto Industrial Products is not engaged in rendering professional services. Minto Industrial Products expressly disclaims all and any liability to any person in respect of anything and of the consequences of anything done or omitted to be done by any such person in reliance whether whole or partial of the whole or any part of the contents of this publication. All rights reserved. No part of this work covered by copyright may be reproduced or copied in any form or by any means without the written permission of Minto Industrial Products.

Certification Details:

Certified to:

IEC 60079--0:2011(Incorporating Corrigendum 1 & 2) IEC 60079--1:2007 (Incorporating Corrigendum 1)

Catalogue Number	Description
AM311RB	300AMP 1100 VOLT 4 PIN MULTI PURPOSE PLUG c/w BECKER NODE
AM361RB	300AMP 660 VOLT 4 PIN MULTI PURPOSE PLUG c/w BECKER NODE
AM331SB	300AMP 3300 VOLT 4 PIN MULTI PURPOSE PLUG c/w BECKER NODE
AM316RB	300AMP 1100 VOLT 6 PIN MULTI PURPOSE PLUG c/w BECKER NODE
AM336RB	300AMP 3300 VOLT 6 PIN MULTI PURPOSE PLUG c/w BECKER NODE
AM411RB	425AMP 1100 VOLT 4 PIN MULTI PURPOSE PLUG c/w BECKER NODE
AM461RB	425AMP 660 VOLT 4 PIN MULTI PURPOSE PLUG c/w BECKER NODE
AM431SB	425AMP 3300 VOLT 4 PIN MULTI PURPOSE PLUG c/w BECKER NODE
AM416RB	425AMP 1100 VOLT 6 PIN MULTI PURPOSE PLUG c/w BECKER NODE
AM436RB	425AMP 3300 VOLT 6 PIN MULTI PURPOSE PLUG c/w BECKER NODE

Certification Details:

Certified to:

IEC 60079--0:2011(Incorporating Corrigendum 1 & 2) IEC 60079--1:2007 (Incorporating Corrigendum 1)
AS/NZS 1299:2009 (incorporating amendment No.1) IEC 60079.11 - 2011

Certificate of Conformity:

IECEX TSA 15.0004X; ANZEx 15.3002X

Type of Protection:

Ex d [ia Ma] I Mb

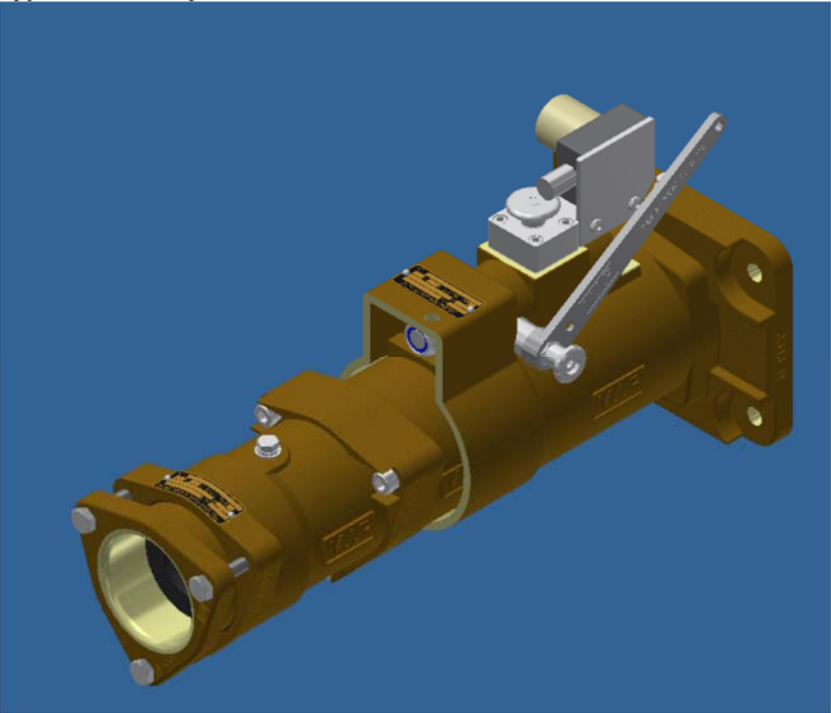
Type

(AS/NZS 1300) Type A

Ingress Protection:

IP 66 (When coupled to a receptacle)

Typical Assembly Detail



This brochure is distributed with the understanding that the authors and editors are not responsible for the results of any actions taken on the basis of the information in this work, or any errors or omission. Further, Minto Industrial Products is not engaged in rendering professional services. Minto Industrial Products expressly disclaims all and any liability to any person in respect of anything and of the consequences of anything done or omitted to be done by any such person in reliance whether whole or partial of the whole or any part of the contents of this publication. All rights reserved. No part of this work covered by copyright may be reproduced or copied in any form or by any means without the written permission of Minto Industrial Products.

Installation of Multipurpose Plug with Becker Node into a Restrained Receptacle or Back to Back Coupler

- Ensure sockets are clean and serviceable.
- Correct pin alignment.
- Insert plug using receptacle operating mechanism.
NB. For quick release mechanism, ensure the locating button is fully home.

Removal of Multipurpose Plug with Becker Node from a Restrained Receptacle or Back to Back Coupler

- To remove plug from receptacle utilise the operating mechanism.
NB. For quick release, lift the locking button first.
- Fit dust cover to plug and receptacle.

Certification Nameplate Details:

TYPICAL RATING PLATE DETAILS	LEGEND		BECKER NODE PROPERTIES
CMI MULTI PURPOSE PLUG - BECKER NODE AM@#%\$B* IP66 TYPE "A" Ex d [ia Ma] I Mb IECEx TSA 15.0004X ANZEx 15.3002X S.O xxxxxx-xx DO NOT SEPARATE WHEN ENERGIZED	@ = AMPS	3 = 300A	BECKER MINING EUROPE GmbH IECEx INE.08.0008U-4 ANZEx 13.3025U TYPE BMN -20°C TO 80°C SERIAL No.: xxxxxxxx UI 30.4 V I 200mA PI 1.54 W CI 0 uF LI 0 uH
	\$ = PINS	1 = 4	
	# = VOLTS	6 = 660V	
	1 = 1100V	3 = 3300V	
	% = INTERIOR	R = RUBBER	
	S = SOLID	B = BECKER NODE	
	* = NOSE CONE	S = STAINLESS STEEL	
	(BLANK) = BRASS		

Conditions of Certification

1. The CMI 300 A/425 A, 660V/1100 V/3300 V restrained multi-purpose plugs fitted with Becker Node Type BMN- are intended to be fitted to Restrained Receptacles and Restrained Receptacles with cable gland and bracket of 300A/425 A, 660 V/1100 V/3300 V range certified under IECEx scheme certificate IECEx TSA 13.0004X
2. When the CMI 300A/425A, 660V/1100V/3300V restrained multipurpose plug is engaged with the CMI receptacle, the assembly is locked by jacking screw or quick release locking mechanism. Further the plug is marked with the following text:
"DO NOT SEPARATE WHEN ENERGISED"

Maintenance

- Inspection shall include cleanliness and compliance with certification documentation.
- Check as per AS/NZS2290.1

Overhaul and Repair

- To be carried out by suitable workshop.

Fasteners

- The special fasteners used to assemble the plug and gland shall be minimum grade 4.6 (yield stress 240MPa) or for stainless steel minimum grade A*-70 (Yield stress 450MPa).

Operating Temperature

- Operating temperature range -20°C to +40°C and average temperature over 24 hours is not to exceed 35°C

CMI Multi Purpose Plug- 660V /1kV/3.3kV 300A/425A Restrained Plug Empty – Large Body

This unit is designed to incorporate specialist signalling and indication electronic modules
Examples are:

- ***Nodes***
- ***Phase rotation/ voltage indication***



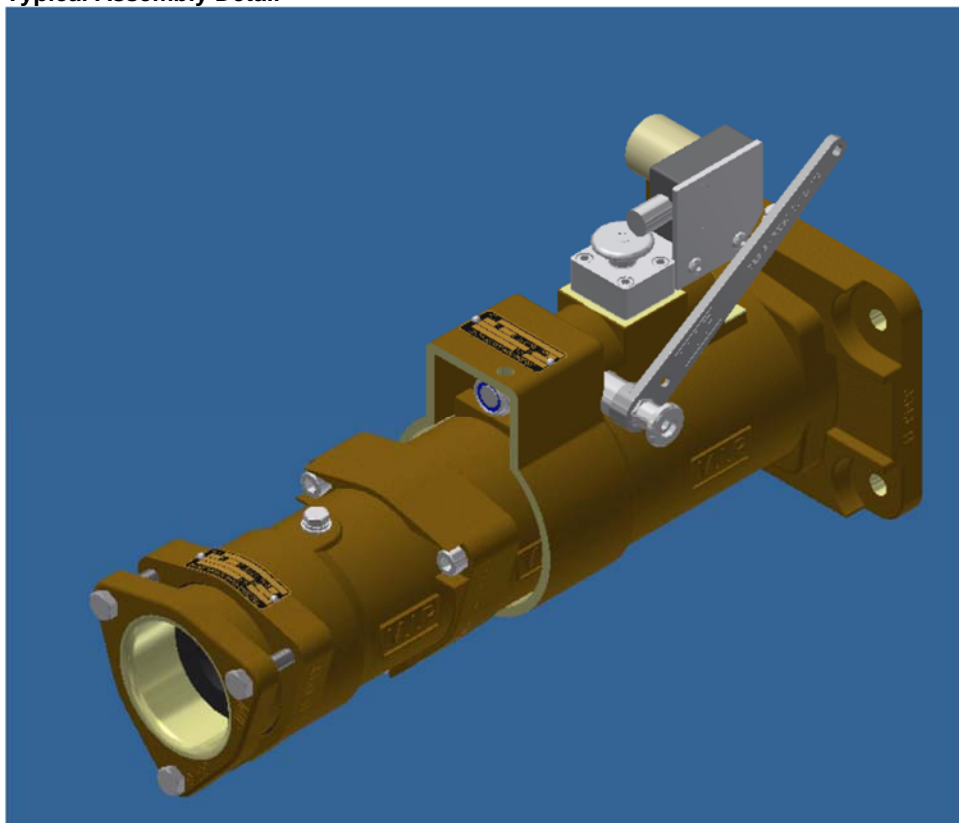
This brochure is distributed with the understanding that the authors and editors are not responsible for the results of any actions taken on the basis of the information in this work, or any errors or omission. Further, Minto Industrial Products is not engaged in rendering professional services. Minto Industrial Products expressly disclaims all and any liability to any person in respect of anything and of the consequences of anything done or omitted to be done by any such person in reliance whether whole or partial of the whole or any part of the contents of this publication. All rights reserved. No part of this work covered by copyright may be reproduced or copied in any form or by any means without the written permission of Minto Industrial Products.

Certification Details:

Certified to: IEC 60079--0:2011(Incorporating Corrigendum 1 & 2) IEC 60079--1:2007 (Incorporating Corrigendum 1)
 AS/NZS 1299:2009 (incorporating amendment No.1)
 Certificate of Conformity: IECEx TSA 15.0003U; ANZEx 15.3001U
 Type of Protection: Ex d I Mb
 Type (AS/NZS 1300) Type A
 Ingress Protection: IP 66 (When coupled to a receptacle)

Catalogue Number	Description
AM311RL	300AMP 1100 VOLT 4 PIN MULTI PURPOSE PLUG EMPTY
AM361RL	300AMP 660 VOLT 4 PIN MULTI PURPOSE PLUG EMPTY
AM331SL	300AMP 3300 VOLT 4 PIN MULTI PURPOSE PLUG EMPTY
AM316RL	300AMP 1100 VOLT 6 PIN MULTI PURPOSE PLUG EMPTY
AM336RL	300AMP 3300 VOLT 6 PIN MULTI PURPOSE PLUG EMPTY
AM411RL	425AMP 1100 VOLT 4 PIN MULTI PURPOSE PLUG EMPTY
AM461RL	425AMP 660 VOLT 4 PIN MULTI PURPOSE PLUG EMPTY
AM431SL	425AMP 3300 VOLT 4 PIN MULTI PURPOSE PLUG EMPTY
AM416RL	425AMP 1100 VOLT 6 PIN MULTI PURPOSE PLUG EMPTY
AM436RL	425AMP 3300 VOLT 6 PIN MULTI PURPOSE PLUG EMPTY

Typical Assembly Detail



This brochure is distributed with the understanding that the authors and editors are not responsible for the results of any actions taken on the basis of the information in this work, or any errors or omission. Further, Minto Industrial Products is not engaged in rendering professional services. Minto Industrial Products expressly disclaims all and any liability to any person in respect of anything and of the consequences of anything done or omitted to be done by any such person in reliance whether whole or partial of the whole or any part of the contents of this publication. All rights reserved. No part of this work covered by copyright may be reproduced or copied in any form or by any means without the written permission of Minto Industrial Products.

Installation of Multipurpose Plug into a Restrained Receptacle or Back to Back Coupler

- Ensure sockets are clean and serviceable.
- Correct pin alignment.
- Insert plug using receptacle operating mechanism.
NB. For quick release mechanism, ensure the locating button is fully home.

Removal of Multipurpose Plug from a Restrained Receptacle or Back to Back Coupler

- To remove plug from receptacle utilise the operating mechanism.
NB. For quick release, lift the locking button first.
- Fit dust cover to plug and receptacle.

Certification Nameplate Details:

TYPICAL RATING PLATE DETAILS	LEGEND			
CMI MULTI PURPOSE PLUG AM@#\$%* IP66 Ex db I Mb ANZEx 15.3001U DO NOT SEPARATE WHEN ENERGIZED	@ = AMPS	3 = 300A 4 = 425A	\$ = PINS	1 = 4 6 = 6
	# = VOLTS	6 = 660V 1 = 1100V 3 = 3300V	% = INTERIOR	R = RUBBER S = SOLID
	* = NOSE CONE	S = STAINLESS STEEL (BLANK) = BRASS		

“Schedule of Limitations” for Ex component:

1. The CMI 300 A/425 A, 660V/1100 V/3300 V restrained multi-purpose plugs are intended to be fitted to Restrained Receptacles and Restrained Receptacles with cable gland and bracket of 300A/425 A, 660 V/1100 V/3300 V range certified under IECEx scheme certificate IECEx TSA 13.0005X
2. When the CMI 300 A/425 A, 660V/1100 V/3300 V restrained multi-purpose plug is engaged with CMI receptacle, the assembly is locked by jacking spindle or quick release locking mechanism. Further the plug is marked with the following text:
“DO NOT SEPARATE WHEN ENERGISED”.
3. Interior insulating material has the maximum continuous operating temperature of 80 °C
4. Ambient temperature range is between -20 °C and + 40 °C
5. Internal components must be fixed and must be placed in any arrangement providing that an area of at least 20 % of each cross sectional area remains free to permit an unimpeded gas flow.
6. Oil-filled circuit breakers and contractors shall not be used.
7. The pilot sockets variants: with one or three pilot sockets connections.
8. When multi-purpose plug is coupled with CMI receptacle 300 A/425 A, 660V/1100 V/3300 V, the assembly can be rated at IP66.
9. The width of flameproof cylindrical joint between multi-purpose plug and CMI restrained receptacle 300 A/425 A, 660V/1100 V/3300 V or back to back receptacle is in accordance with AS/NZS 1299 prescribed dimensions which are greater than 25 mm when plug is fully engaged and the maximum gap is 0.4 mm.
10. The width of flameproof flange joint between the receptacle and the Ex d enclosure shall be with flamepath minimum width $L = 12.5$ mm and maximum gap $i = 0.4$ mm. Refer to the manufacturer's instruction TRP-2 for details.

Maintenance

- Inspection shall include cleanliness and compliance with certification documentation.
- Check as per AS/NZS2290.1

Overhaul and Repair

- To be carried out by suitable workshop.

Fasteners

- The special fasteners used to assemble the plug and gland shall be minimum grade 4.6 (yield stress 240MPa) or for stainless steel minimum grade A*-70 (Yield stress 450MPa).

Operating Temperature

- Operating temperature range -20°C to +40°C and average temperature over 24 hours is not to exceed 35°C

**CMI Multi Purpose Plug- 660V /1kV/3.3kV 300A/425A Restrained Plug– Large Body –
Ampcontrol Node type RTX with Integral Phase Indicator**

This unit is designed to incorporate specialist signalling and indication electronic modules

- This model incorporates an Ampcontrol RTX node with integral phase indicator



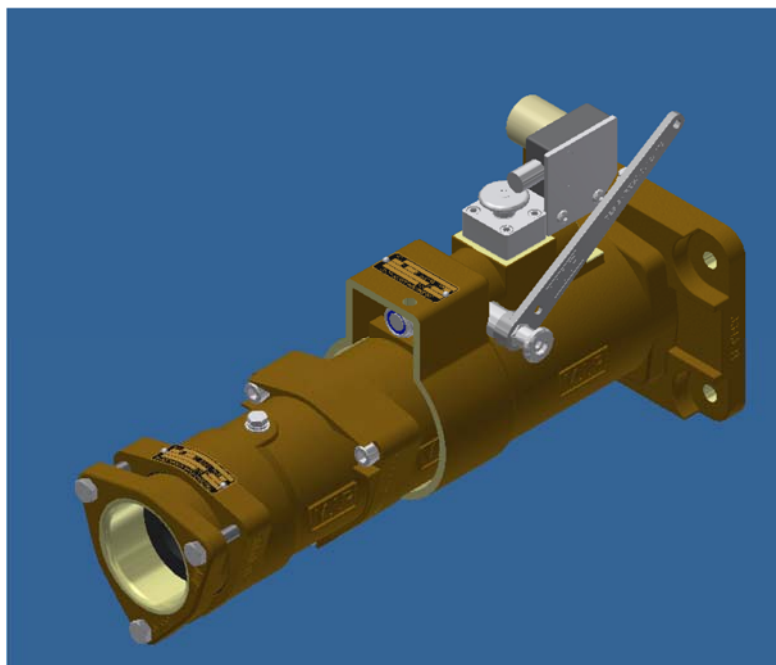
This brochure is distributed with the understanding that the authors and editors are not responsible for the results of any actions taken on the basis of the information in this work, or any errors or omission. Further, Minto Industrial Products is not engaged in rendering professional services. Minto Industrial Products expressly disclaims all and any liability to any person in respect of anything and of the consequences of anything done or omitted to be done by any such person in reliance whether whole or partial of the whole or any part of the contents of this publication. All rights reserved. No part of this work covered by copyright may be reproduced or copied in any form or by any means without the written permission of Minto Industrial Products.

Catalogue Number	Description
AM311RLA	300A 1100 V 4 PIN MULTI PURPOSE PLUG c/w AMPCONTROL NODE & PH IND
AM361RLA	300A 660 V 4 PIN MULTI PURPOSE PLUG c/w AMPCONTROL NODE & PH IND
AM331SLA	300A 3300 V 4 PIN MULTI PURPOSE PLUG c/w AMPCONTROL NODE & PH IND
AM316RLA	300A 1100 V 6 PIN MULTI PURPOSE PLUG c/w AMPCONTROL NODE & PH IND
AM336RLA	300A 3300 V 6 PIN MULTI PURPOSE PLUG c/w AMPCONTROL NODE & PH IND
AM411RLA	425A 1100 V 4 PIN MULTI PURPOSE PLUG c/w AMPCONTROL NODE & PH IND
AM461RLA	425A 660 V 4 PIN MULTI PURPOSE PLUG c/w AMPCONTROL NODE & PH IND
AM431SLA	425A 3300 V 4 PIN MULTI PURPOSE PLUG c/w AMPCONTROL NODE & PH IND
AM416RLA	425A 1100 V 6 PIN MULTI PURPOSE PLUG c/w AMPCONTROL NODE & PH IND
AM436RLA	425A 3300 V 6 PIN MULTI PURPOSE PLUG c/w AMPCONTROL NODE & PH IND

Certification Details:

Certified to: IEC 60079--0:2011(Incorporating Corrigendum 1 & 2) IEC 60079--1:2007 (Incorporating Corrigendum 1)
 AS/NZS 1299:2009 (incorporating amendment No.1) IEC 60079.11 - 2011
 Certificate of Conformity: IECEX TSA 15.0004X; ANZEx 15.3002X
 Type of Protection: Ex d [ia Ma] I Mb
 Type (AS/NZS 1300) Type A
 Ingress Protection: IP 66 (When coupled to a receptacle)

Typical Assembly Detail



This brochure is distributed with the understanding that the authors and editors are not responsible for the results of any actions taken on the basis of the information in this work, or any errors or omission. Further, Minto Industrial Products is not engaged in rendering professional services. Minto Industrial Products expressly disclaims all and any liability to any person in respect of anything and of the consequences of anything done or omitted to be done by any such person in reliance whether whole or partial of the whole or any part of the contents of this publication. All rights reserved. No part of this work covered by copyright may be reproduced or copied in any form or by any means without the written permission of Minto Industrial Products.



A division of CMI Operations Pty Ltd
ABN 87 088 279 270

Sydney 18-20 Railway Road Meadowbank NSW 2114
Postal Address: Locked Bag M3 Meadowbank NSW 2114
Telephone: (02) 9807 6155 Facsimile: (02) 9808 2033

Melbourne 3-5 Dissik Street Cheltenham VIC 3192
Telephone: (03) 9532 1233 Facsimile: (03) 9553 3502

Perth 36 Division Street Welshpool WA 6106
Telephone: (08) 9358 1788 Facsimile: (08) 9358 1733

Brisbane 485A Zillmere Road Zillmere QLD 4034
Postal Address: PO Box 642 Virginia QLD 4014
Telephone: (07) 3863 0749 Facsimile: (07) 3863 0795

Rockhampton Shop3, 76 Hollingsworth St
North Rockhampton QLD 4701
Postal Address: PO Box 1124 North Rockhampton QLD 4701
Telephone: (07) 4921 0978 Facsimile: (07) 4921 0981

For all account enquiries **Phone** (02) 8878 1320 **Fax** (02) 9808 4977

Installation of Multipurpose Plug with Ampcontrol Node into a Restrained Receptacle or Back to Back Coupler

- Ensure sockets are clean and serviceable.
- Correct pin alignment.
- Insert plug using receptacle operating mechanism.
NB. For quick release mechanism, ensure the locating button is fully home.

Removal of Multipurpose Plug with Ampcontrol Node from a Restrained Receptacle or Back to Back Coupler

- To remove plug from receptacle utilise the operating mechanism.
NB. For quick release, lift the locking button first.
- Fit dust cover to plug and receptacle.

Certification Nameplate Details:

TYPICAL RATING PLATE DETAILS	LEGEND		AMPCONTROL NODE PROPERTIES
CMI MULTI PURPOSE PLUG - RTX / PHASE IND AM@#S%A* IP66 Ex d [ia Ma] I Mb ANZEx 15.3002X DO NOT SEPARATE WHEN ENERGIZED	@ = AMPS # = VOLTS * = NOSE CONE	3 = 300A 4 = 425A 6 = 660V 1 = 1100V 3 = 3300V S = STAINLESS STEEL (BLANK) = BRASS	\$ = PINS 1 = 4 6 = 6 % = INTERIOR R = RUBBER S = SOLID A = RTX
TYPE "A" IECEX TSA 15.0004X S.O xxxxx-xx			AMPCONTROL CSM Pty Ltd IECEX ITA 12.0032X TYPE RTX with PHASE INDICATOR [Ex IA] 0°C <Ta<60°C SERIAL No: xxxxxxxxxx Ui 28V Ci 18.8nF Li Negligible mH

Conditions of Certification

1. The CMI 300 A/425 A, 660V/1100 V/3300 V restrained multi-purpose plugs fitted with Ampcontrol Node Type RTX- are intended to be fitted to Restrained Receptacles and Restrained Receptacles with cable gland and bracket of 300A/425 A, 660 V/1100 V/3300 V range certified under IECEX scheme certificate IECEX TSA 13.0005X
2. When the CMI 300A/425A, 660V/1100V/3300V restrained multipurpose plug is engaged with the CMI receptacle, the assembly is locked by jacking screw or quick release locking mechanism. Further the plug is marked with the following text:
"DO NOT SEPARATE WHEN ENERGISED"

Maintenance

- Inspection shall include cleanliness and compliance with certification documentation.
- Check as per AS/NZS2290.1

Overhaul and Repair

- To be carried out by suitable workshop.

Fasteners

- The special fasteners used to assemble the plug and gland shall be minimum grade 4.6 (yield stress 240MPa) or for stainless steel minimum grade A*-70 (Yield stress 450MPa).

Operating Temperature

- Operating temperature range -20°C to +40°C and average temperature over 24 hours is not to exceed 35°C

This brochure is distributed with the understanding that the authors and editors are not responsible for the results of any actions taken on the basis of the information in this work, or any errors or omission. Further, Minto Industrial Products is not engaged in rendering professional services. Minto Industrial Products expressly disclaims all and any liability to any person in respect of anything and of the consequences of anything done or omitted to be done by any such person in reliance whether whole or partial of the whole or any part of the contents of this publication. All rights reserved. No part of this work covered by copyright may be reproduced or copied in any form or by any means without the written permission of Minto Industrial Products.



CMI Multi Purpose Plug- 660V /1kV/3.3kV 300A/425A Restrained Plug – Large Body with Phase Indicator or - Dummy Plug with diode

This unit is designed to incorporate specialist signalling and indication electronic modules
Examples are:

- ***Nodes***
- ***Phase rotation/ voltage indication***



This brochure is distributed with the understanding that the authors and editors are not responsible for the results of any actions taken on the basis of the information in this work, or any errors or omission. Further, Minto Industrial Products is not engaged in rendering professional services. Minto Industrial Products expressly disclaims all and any liability to any person in respect of anything and of the consequences of anything done or omitted to be done by any such person in reliance whether whole or partial of the whole or any part of the contents of this publication. All rights reserved. No part of this work covered by copyright may be reproduced or copied in any form or by any means without the written permission of Minto Industrial Products.

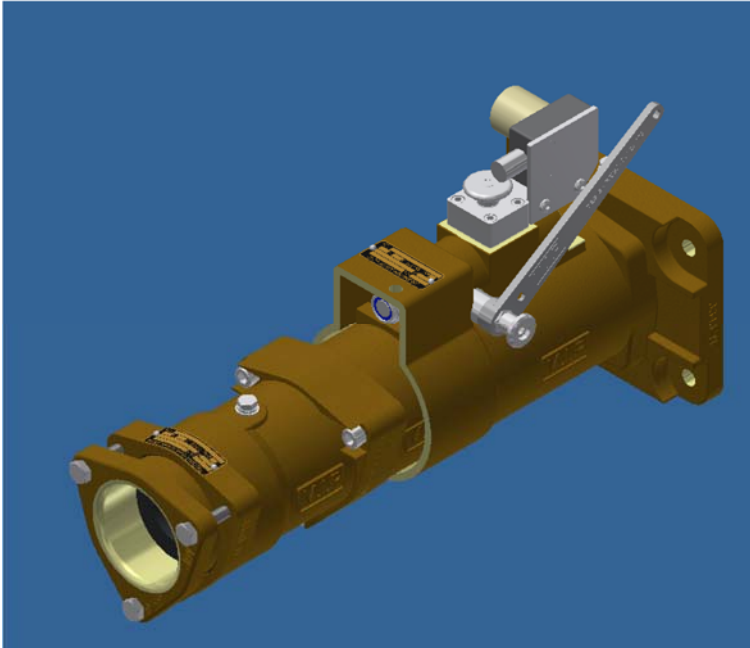
Certification Details:

Certified to: IEC 60079--0:2011(Incorporating Corrigendum 1 & 2) IEC 60079--1:2007 (Incorporating Corrigendum 1)
 AS/NZS 1299:2009 (incorporating amendment No.1)
 Certificate of Conformity: IECEx TSA 15.0003U; ANZEx 15.3001U
 Type of Protection: Ex d I Mb
 Type (AS/NZS 1300) Type A
 Ingress Protection: IP 66 (When coupled to a receptacle)

Catalogue Number	Description – Phase Indicator Units
AT311LR	300AMP 1100 VOLT 4 PIN MULTI PURPOSE PHASE IND
AT361LR	300AMP 660 VOLT 4 PIN MULTI PURPOSE PHASE IND
AT331LS	300AMP 3300 VOLT 4 PIN MULTI PURPOSE PHASE IND
AT316LR	300AMP 1100 VOLT 6 PIN MULTI PURPOSE PHASE IND
AT336LR	300AMP 3300 VOLT 6 PIN MULTI PURPOSE PHASE IND
AT411LR	425AMP 1100 VOLT 4 PIN MULTI PURPOSE PHASE IND
AT461LR	425AMP 660 VOLT 4 PIN MULTI PURPOSE PHASE IND
AT431LS	425AMP 3300 VOLT 4 PIN MULTI PURPOSE PHASE IND
AT416LR	425AMP 1100 VOLT 6 PIN MULTI PURPOSE PHASE IND
AT436LR	425AMP 3300 VOLT 6 PIN MULTI PURPOSE PHASE IND

Catalogue Number	Description – Dummy Plug Units
AR311LR	300AMP 1100 VOLT 4 PIN DUMMY PLUG
AR361LR	300AMP 660 VOLT 4 PIN DUMMY PLUG
AR331LS	300AMP 3300 VOLT 4 PIN DUMMY PLUG
AR316LR	300AMP 1100 VOLT 6 PIN DUMMY PLUG
AR336LR	300AMP 3300 VOLT 6 PIN DUMMY PLUG
AR411LR	425AMP 1100 VOLT 4 PIN DUMMY PLUG
AR461LR	425AMP 660 VOLT 4 PIN DUMMY PLUG
AR431LS	425AMP 3300 VOLT 4 PIN DUMMY PLUG
AR416LR	425AMP 1100 VOLT 6 PIN DUMMY PLUG
AR436LR	425AMP 3300 VOLT 6 PIN DUMMY PLUG

Typical Assembly Detail



Installation of Multipurpose Plug into a Restrained Receptacle or Back to Back Coupler

- Ensure sockets are clean and serviceable.
- Correct pin alignment.
- Insert plug using receptacle operating mechanism.
NB. For quick release mechanism, ensure the locating button is fully home.

Removal of Multipurpose Plug from a Restrained Receptacle or Back to Back Coupler

- To remove plug from receptacle utilise the operating mechanism.
NB. For quick release, lift the locking button first.
- Fit dust cover to plug and receptacle.

Certification Nameplate Details:

TYPICAL RATING PLATE DETAILS	LEGEND	
CMI MULTI PURPOSE PLUG - PHASE IND AT@#\$%* IP66 Ex d [ia Ma] I Mb ANZEx 15.3002X DO NOT SEPARATE WHEN ENERGIZED	@ = AMPS	\$ = PINS
	3 = 300A	1 = 4
	4 = 425A	6 = 6
	# = VOLTS	% = INTERIOR
TYPE "A"	6 = 660V	R = RUBBER
IECEx TSA 15.0004X	1 = 1100V	S = SOLID
S.O xxxxx-xx	3 = 3300V	
	* = NOSE CONE	S = STAINLESS STEEL
	(BLANK) = BRASS	

This brochure is distributed with the understanding that the authors and editors are not responsible for the results of any actions taken on the basis of the information in this work, or any errors or omission. Further, Minto Industrial Products is not engaged in rendering professional services. Minto Industrial Products expressly disclaims all and any liability to any person in respect of anything and of the consequences of anything done or omitted to be done by any such person in reliance whether whole or partial of the whole or any part of the contents of this publication. All rights reserved. No part of this work covered by copyright may be reproduced or copied in any form or by any means without the written permission of Minto Industrial Products.

TYPICAL RATING PLATE DETAILS		LEGEND	
CMI MULTI PURPOSE PLUG - DUMMY AR@#\$%* IP66 Ex d [ia Ma] I Mb ANZEx 15.3002X DO NOT SEPARATE WHEN ENERGIZED		@ = AMPS	3 = 300A
			4 = 425A
		# = VOLTS	6 = 660V
	TYPE "A"		1 = 1100V
	IECEX TSA 15.0004X		3 = 3300V
	S.O xxxxx-xx	* = NOSE CONE	S = STAINLESS STEEL
			(BLANK) = BRASS
		\$ = PINS	1 = 4
			6 = 6
		% = INTERIOR	R = RUBBER
			S = SOLID

"Schedule of Limitations" for Ex component:

1. The CMI 300 A/425 A, 660V/1100 V/3300 V restrained multi-purpose plugs are intended to be fitted to Restrained Receptacles and Restrained Receptacles with cable gland and bracket of 300A/425 A, 660 V/1100 V/3300 V range certified under IECEx scheme certificate IECEx TSA 13.0005X
2. When the CMI 300 A/425 A, 660V/1100 V/3300 V restrained multi-purpose plug is engaged with CMI receptacle, the assembly is locked by jacking spindle or quick release locking mechanism. Further the plug is marked with the following text: "DO NOT SEPARATE WHEN ENERGISED".
3. Interior insulating material has the maximum continuous operating temperature of 80 °C
4. Ambient temperature range is between -20 °C and + 40 °C
5. Internal components must be fixed and must be placed in any arrangement providing that an area of at least 20 % of each cross sectional area remains free to permit an unimpeded gas flow.
6. Oil-filled circuit breakers and contractors shall not be used.
7. The pilot sockets variants: with one or three pilot sockets connections.
8. When multi-purpose plug is coupled with CMI receptacle 300 A/425 A, 660V/1100 V/3300 V, the assembly can be rated at IP66.
9. The width of flameproof cylindrical joint between multi-purpose plug and CMI restrained receptacle 300 A/425 A, 660V/1100 V/3300 V or back to back receptacle is in accordance with AS/NZS 1299 prescribed dimensions which are greater than 25 mm when plug is fully engaged and the maximum gap is 0.4 mm.
10. The width of flameproof flange joint between the receptacle and the Ex d enclosure shall be with flamepath minimum width $L = 12.5$ mm and maximum gap $i = 0.4$ mm. Refer to the manufacturer's instruction TRP-2 for details.

Maintenance

- Inspection shall include cleanliness and compliance with certification documentation.
- Check as per AS/NZS2290.1

Overhaul and Repair

- To be carried out by suitable workshop.

Fasteners

- The special fasteners used to assemble the plug and gland shall be minimum grade 4.6 (yield stress 240MPa) or for stainless steel minimum grade A*-70 (Yield stress 450MPa).

Operating Temperature

- Operating temperature range -20°C to +40°C and average temperature over 24 hours is not to exceed 35°C