
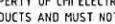

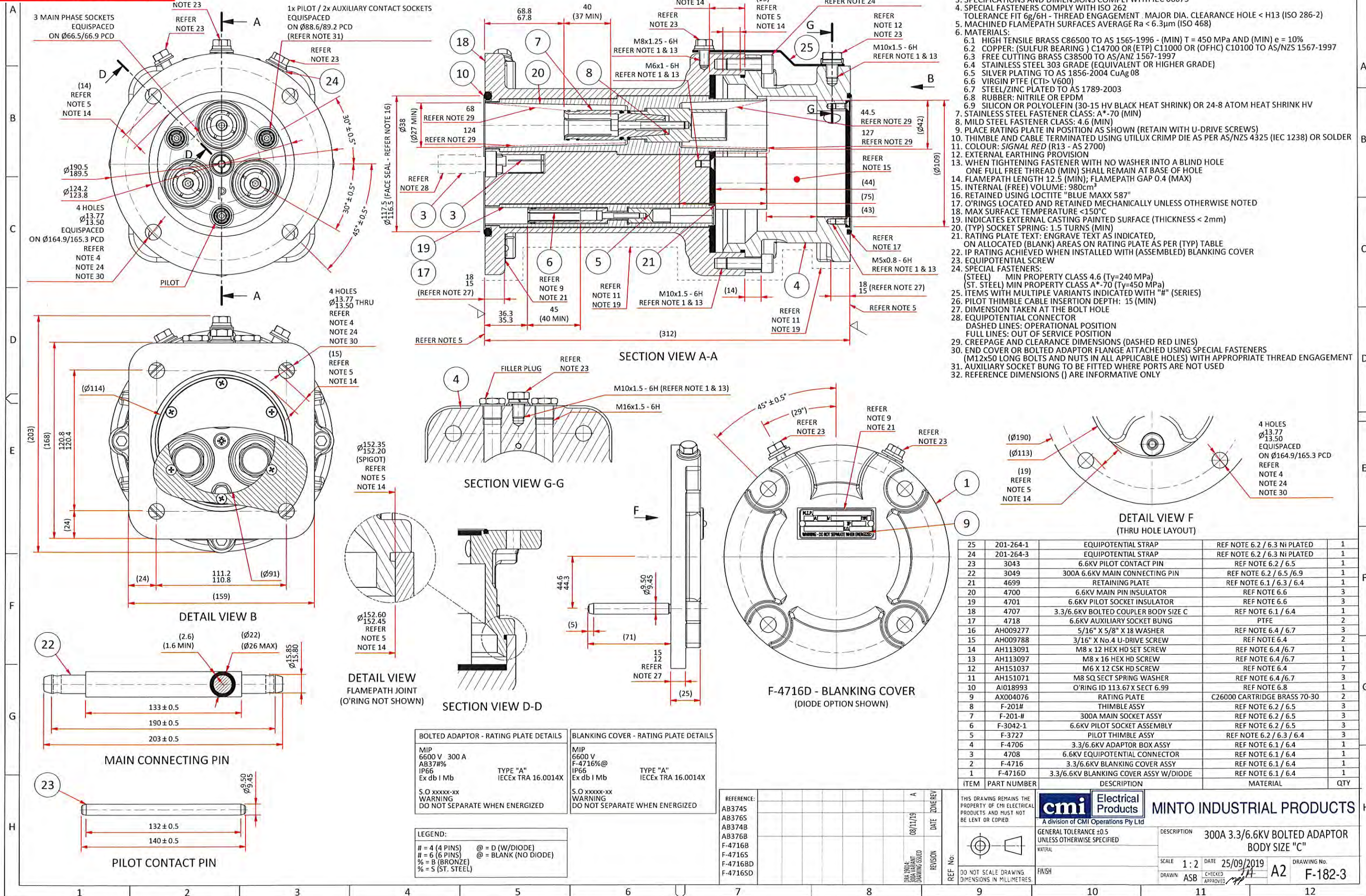


25	201-264-1	EQUIPOTENTIAL STRAP	REF NOTE 6.2 / 6.3 NI PLATED	1
24	201-264-3	EQUIPOTENTIAL STRAP	REF NOTE 6.2 / 6.3 NI PLATED	1
23	3043	6.6KV PILOT CONTACT PIN	REF NOTE 6.2 / 6.5	1
22	3478	425A 6.6KV MAIN CONNECTING PIN	REF NOTE 6.2 / 6.5 / 6.9	1
21	4699	RETAINING PLATE	REF NOTE 6.1 / 6.3 / 6.4	1
20	4700	6.6KV MAIN PIN INSULATOR	REF NOTE 6.6	3
19	4701	6.6KV PILOT SOCKET INSULATOR	REF NOTE 6.6	3
18	4707	3.3/6.6KV BOLTED COUPLER BODY SIZE C	REF NOTE 6.1 / 6.4	1
17	4718	6.6KV AUXILIARY SOCKET BUNG	PTFE	2
16	AH009277	5/16" X 5/8" X 18 WASHER	REF NOTE 6.4 / 6.7	3
15	AH009788	3/16" X No.4 U-DRIVE SCREW	REF NOTE 6.4	2
14	AH113091	M8 x 12 HEX HD SET SCREW	REF NOTE 6.4 / 6.7	1
13	AH113097	M8 x 16 HEX HD SCREW	REF NOTE 6.4 / 6.7	1
12	AH151037	M6 X 12 CSK HD SCREW	REF NOTE 6.4	7
11	AH151071	M8 SQ SECT SPRING WASHER	REF NOTE 6.4 / 6.7	3
10	A/O18993	O'RING ID 113.67 X SECT 6.99	REF NOTE 6.8	1
9	AX004076	RATING PLATE	C26000 CARTRIDGE BRASS 70-30	2
8	F-201#	THIMBLE ASSY	REF NOTE 6.2 / 6.5	3
7	F-201-#	425A MAIN SOCKET ASSY	REF NOTE 6.2 / 6.5	3
6	F-3042-1	6.6KV PILOT SOCKET ASSEMBLY	REF NOTE 6.2 / 6.5	3
5	F-3727	PILOT THIMBLE ASSY	REF NOTE 6.2 / 6.3 / 6.4	3
4	F-4706	3.3/6.6KV ADAPTOR BOX ASSY	REF NOTE 6.1 / 6.4	1
3	4708	6.6KV EQUIPOTENTIAL CONNECTOR	REF NOTE 6.1 / 6.4	1
2	F-4716	3.3/6.6KV BLANKING COVER ASSY	REF NOTE 6.1 / 6.4	1
1	F-4716D	3.3/6.6KV BLANKING COVER ASSY W/DIODE	REF NOTE 6.1 / 6.4	1
ITEM	PART NUMBER	DESCRIPTION	MATERIAL	QTY

REFERENCE:	N	M	L	K	REV	THIS DRAWING REMAINS THE PROPERTY OF CMI ELECTRICAL PRODUCTS AND MUST NOT BE LENT OR COPIED.	 Electrical Products A division of CMI Operations Pty Ltd	MINTO INDUSTRIAL PRODUCTS					
AB4745	25/09/19	20/12/17	13/12/16	07/07/16	DATE				GENERAL TOLERANCE ± 0.5 UNLESS OTHERWISE SPECIFIED MATERIAL	DESCRIPTION 425A 3.3/6.6KV BOLTED ADAPTOR BODY SIZE "C"	SCALE 1 : 2	DATE 25/05/2016	DRAWING No. A2
AB4765													
AB474B													
AB476B													
F-4716B	DRA 3004: REVARIANT ADDED: 08 WAS WITH PILOT BUNG ADDED PARTS LIST CORRECTED RATING OF DETAILS UPDATED FASTENER: REVISE NOTES					REF No:	DO NOT SCALE DRAWING. DIMENSIONS IN MILLIMETRES	FINISH	CHECKED APPROVED 	F-182			
F-47165	DRA 1205: HEX HEADLINE ADDED TO INQUIRY PLY CLARIFIED USE OF SPEC FASTENER: REVISE NOTES												
F-4716BD	DRA 1205: ADDITIONAL REPAIR TO DRAWING: 0800 DIM 0111 WAS 0119 PARTS LIST UPDATED												
F-4716SD	TELECON INSERTS ADDED												



25	201-264-1	EQUIPOTENTIAL STRAP	REF NOTE 6.2 / 6.3 Ni PLATED	1
24	201-264-3	EQUIPOTENTIAL STRAP	REF NOTE 6.2 / 6.3 Ni PLATED	1
23	3043	6.6KV PILOT CONTACT PIN	REF NOTE 6.2 / 6.5	1
22	3049	300A 6.6KV MAIN CONNECTING PIN	REF NOTE 6.2 / 6.5 / 6.9	1
21	4699	RETAINING PLATE	REF NOTE 6.1 / 6.3 / 6.4	1
20	4700	6.6KV MAIN PIN INSULATOR	REF NOTE 6.6	3
19	4701	6.6KV PILOT SOCKET INSULATOR	REF NOTE 6.6	3
18	4707	3.3/6.6KV BOLTED COUPLER BODY SIZE C	REF NOTE 6.1 / 6.4	1
17	4718	6.6KV AUXILIARY SOCKET BUNG	PTFE	2
16	AH009277	5/16" X 5/8" X 18 WASHER	REF NOTE 6.4 / 6.7	3
15	AH009788	3/16" X No.4 U-DRIVE SCREW	REF NOTE 6.4	2
14	AH113091	M8 x 12 HEX HD SCT SCREW	REF NOTE 6.4 / 6.7	1
13	AH113097	M8 x 16 HEX HD SCREW	REF NOTE 6.4 / 6.7	1
12	AH151037	M6 X 12 CSK HD SCREW	REF NOTE 6.4	7
11	AH151071	M8 SQ SECT SPRING WASHER	REF NOTE 6.4 / 6.7	3
10	AI018993	O'RING ID 113.67X SECT 6.99	REF NOTE 6.8	1
9	AX004076	RATING PLATE	C26000 CARTRIDGE BRASS 70-30	2
8	F-201#	THIMBLE ASSY	REF NOTE 6.2 / 6.5	3
7	F-201-#	300A MAIN SOCKET ASSY	REF NOTE 6.2 / 6.5	3
6	F-3042-1	6.6KV PILOT SOCKET ASSEMBLY	REF NOTE 6.2 / 6.5	3
5	F-3727	PILOT THIMBLE ASSY	REF NOTE 6.2 / 6.3 / 6.4	3
4	F-4706	3.3/6.6KV ADAPTOR BOX ASSY	REF NOTE 6.1 / 6.4	1
3	4708	6.6KV EQUIPOTENTIAL CONNECTOR	REF NOTE 6.1 / 6.4	1
2	F-4716	3.3/6.6KV BLANKING COVER ASSY	REF NOTE 6.1 / 6.4	1
1	F-4716D	3.3/6.6KV BLANKING COVER ASSY W/DIODE	REF NOTE 6.1 / 6.4	1
ITEM	PART NUMBER	DESCRIPTION	MATERIAL	QTY

THIS DRAWING REMAINS THE PROPERTY OF CMI ELECTRICAL PRODUCTS AND MUST NOT BE LENT OR COPIED 		 A division of CMI Operations Pty Ltd		MINTO INDUSTRIAL PRODUCTS	
DO NOT SCALE DRAWING DIMENSIONS IN MILLIMETRES		GENERAL TOLERANCE ± 0.5 UNLESS OTHERWISE SPECIFIED MATERIAL		DESCRIPTION 300A 3.3/6.6KV BOLTED ADAPTOR BODY SIZE "C"	
FINISH		SCALE 1 : 2		DATE 25/09/2019	
		DRAWN ASB		CHECKED <i>mp</i> APPROVED <i>mp</i>	
9		10		11	
				12	

Instructions for Body Size C Bolted Range **Inst. Body Size C - 1**



The equipment is certified to IECEx TRA 16.0014X (maximum operating temperature 150°C) and is designed to AS/NZS1300, IEC 60079-0 & 60079-1 and the plug will accept suitably rated cables manufactured to AS/NZS1802 and AS/NZS2802. It is recommended that the equipment be overhauled at intervals that do not exceed the requirements of AS/NZS2290.1. Maintain to the requirements of AS/NZS3800 for couplers / adaptors and AS/NZS1747 for cable fitment by suitably competent persons.

Catalogue Number	Description
AB*74B	300A - 425AMP 3300/6600 VOLT 4 PIN BOLTED ADAPTOR BRONZE
AB*74S	300A - 425AMP 3300/6600 VOLT 4 PIN BOLTED ADAPTOR ST. STEEL
AA*74B	300A - 425AMP 3300/6600 VOLT 4 PIN BOLTED COUPLER BRONZE
AA*74S	300A - 425AMP 3300/6600 VOLT 4 PIN BOLTED COUPLER ST. STEEL
AB*76B	300A - 425AMP 3300/6600 VOLT 6 PIN BOLTED ADAPTOR BRONZE
AB*76S	300A - 425AMP 3300/6600 VOLT 6 PIN BOLTED ADAPTOR ST. STEEL
AA*76B	300A - 425AMP 3300/6600 VOLT 6 PIN BOLTED COUPLER BRONZE
AA*76S	300A - 425AMP 3300/6600 VOLT 6 PIN BOLTED COUPLER ST. STEEL
F-4716B	BOLTED END COVER BRONZE
F-4716S	BOLTED END COVER ST. STEEL
F-4716BD	BOLTED END COVER WITH DIODE BRONZE
F-4716SD	BOLTED END COVER WITH DIODE ST. STEEL

LEGEND: * = 3 (300A)
* = 4 (425A)

• **Installation**

- Confirm components suitable for application e.g. thimbles and grommets suitable for the conductors and cable.
- The use of suitable HV termination kits is recommended and the cables should be prepared using the instructions supplied with these kits.
- Gland fitting cable preparation.
 - Slide the gland cap, neoprene cone and gland body along the cable.
 - Prepare the cable AS PER THE INSTRUCTIONS BELOW
 - Select, crimp or solder the thimbles to the phase, pilot and earth conductors using the details in drawing: **F-182-1 (MAIN PHASE/PILOT THIMBLES – BOLTED PRODUCT RANGE)**
 - NOTE: For more information refer to TCG-1 No.2 to No.5 Glands Termination and Maintenance instruction.

• **Coupler fitting**

- Fit the conductors to the appropriate location securing in place with screw through socket where appropriate
- Assemble the coupler, ensuring the interior rotation conforms to AS/NZS1300
- Then fit blanking cover (F-4716) if required. Care should be taken not to damage the flange flamepath.
- Slide the neoprene cone into position and bolt the gland cap firmly to the body (25Nm).
- Test as per the requirements of AS/NZS1747.

• **Connection of Protective Earthing Conductors**

- This range of bolted couplers and adaptors has facility for earthing conductors up to 150 mm².
- It is the responsibility of the installer to determine and fit the correct sized earth conductors.

This brochure is distributed with the understanding that the authors and editors are not responsible for the results of any actions taken on the basis of the information in this work, or any errors or omission. Further, Minto Industrial Products is not engaged in rendering professional services. Minto Industrial Products expressly disclaims all and any liability to any person in respect of anything and of the consequences of anything done or omitted to be done by any such person in reliance whether whole or partial of the whole or any part of the contents of this publication. All rights reserved. No part of this work covered by copyright may be reproduced or copied in any form or by any means without the written permission of Minto Industrial Products.



A division of **CMI Operations Pty Ltd**
ABN 87 088 279 270

□ **Sydney** 18-20 Railway Road Meadowbank NSW 2114
Postal Address: Locked Bag M3 Meadowbank NSW 2114
Telephone: (02) 9807 6155 Facsimile: (02) 9808 2033
□ **Melbourne** 3-5 Dissik Street Cheltenham Vic 3192
Telephone: (03) 9532 1233 Facsimile: (03) 9553 3502
□ **Perth** 36 Division Street Welshpool WA 6106
Telephone: (08) 9358 1788 Facsimile: (08) 9358 1733

□ **Brisbane** 485A Zillmere Road Zillmere QLD 4034
Postal Address: PO Box 642 Virginia Qld 4014
Telephone: (07) 3865 4745 Facsimile: (07) 3865 7494
□ **Rockhampton** Shop 3, 76 Hollingsworth Street
North Rockhampton QLD 4701
Postal Address: PO Box 1124 North Rockhampton QLD 4701
Telephone: (07) 4921 0978 Facsimile: (07) 4921 0981

For all account enquiries **Phone** (02) 8878 1320 **Fax** (02) 9808 4977



• Use

- Isolate power before connecting or disconnecting.

• Adaptor fitting

- For mounting to an enclosure, the adaptor box, (F-4706) shall be utilized. The adaptor box shall be fastened to the coupler utilizing the supplied M10 x 35mm bolts. The flange mounting dimensions for the adaptor box to an enclosure are specified in drawings F-182 & F-182-3. The flange flamepath used to assemble the adaptor to a flameproof enclosure shall be of minimum width 12.5mm and maximum gap 0.4mm.
- Attach to enclosure via special fasteners as detailed below in the **Fasteners** section
- Normally, connection to the equipment within an enclosure will be undertaken utilizing single core cables.
- Select, crimp or solder the thimbles to the phase and pilot conductors using the details in drawing: **F-182-1 (MAIN PHASE/PILOT THIMBLES – BOLTED PRODUCT RANGE)**

• Assembly

- Ensure sockets are clean and serviceable.
- Insert correct phase and pilot connecting pins
- Ensure correct pin alignment.
- Bolt together using M12 x 60 special fasteners.

• Disassembly

- Remove M12 x 60 bolts to separate.
- Remove correct phase and pilot connecting pins
- Fit blanking cover to flanges.

• Certification Details

Certified to: IEC 60079-0: 2011 (Incorporating Corrigendum 1 & 2); IEC 60079-1:2014; AS/NZS 1300:2009 (incorporating amendment No.1)
Certificate of Conformity: IECEx TRA 16.0014X
Type of Protection: Ex db I Mb
Type (AS/NZS 1300) Type A
Ingress Protection: IP 66

• Certification Nameplate Details

TYPICAL ADAPTOR / COUPLER RATING PLATE DETAILS 300A	TYPICAL ADAPTOR / COUPLER RATING PLATE DETAILS 425A	TYPICAL END COVER RATING PLATE DETAILS
M.I.P. 6600 V 300 A A\$37#% IP66 Ex db I Mb TYPE "A" IECEx TRA 16.0014X S.O xxxxx-xx WARNING DO NOT SEPARATE WHEN ENERGIZED	M.I.P. 6600 V 425 A A\$47#% IP66 Ex db I Mb TYPE "A" IECEx TRA 16.0014X S.O xxxxx-xx WARNING DO NOT SEPARATE WHEN ENERGIZED	M.I.P. 6600 V F-4716% IP66 Ex db I Mb TYPE "A" IECEx TRA 16.0014X S.O xxxxx-xx WARNING DO NOT SEPARATE WHEN ENERGIZED

LEGEND: \$=A (COUPLER) #=4 (4 PINS) %=B (BRONZE) @= D (W/DIODE)
 \$=B (ADAPTOR) #=6 (6 PINS) %=S (ST. STEEL) @= BLANK (NO DIODE)

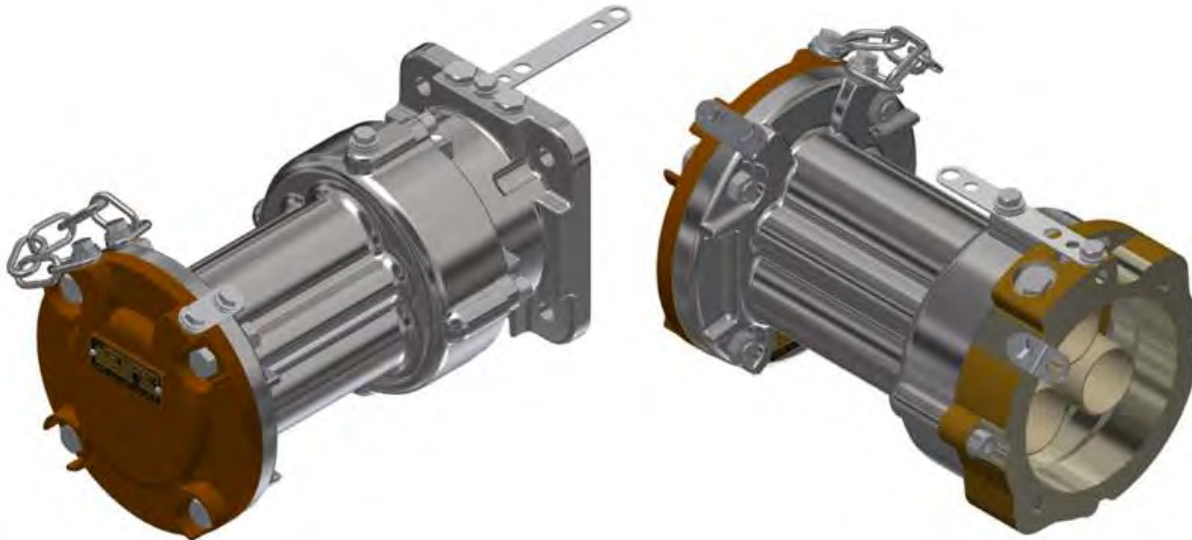
This brochure is distributed with the understanding that the authors and editors are not responsible for the results of any actions taken on the basis of the information in this work, or any errors or omission. Further, Minto Industrial Products is not engaged in rendering professional services. Minto Industrial Products expressly disclaims all and any liability to any person in respect of anything and of the consequences of anything done or omitted to be done by any such person in reliance whether whole or partial of the whole or any part of the contents of this publication. All rights reserved. No part of this work covered by copyright may be reproduced or copied in any form or by any means without the written permission of Minto Industrial Products.



• Flamepath Details

- Refer to the drawings listed on the certificate for details of flamepaths.

• Typical Assembly Details



• Maintenance

- Inspection shall include cleanliness and compliance with certification documentation.
- Inspect as per AS/NZS2290.1

• Overhaul and Repair

- To be carried out by suitable certified workshop.

• Fasteners

- The special fasteners used to assemble the plug and gland shall be minimum grade 4.6 (yield stress 240MPa) or for stainless steel minimum grade A*-70 (Yield stress 450MPa).

• Operating Temperature

- Ambient Operating temperature range -20°C to +40°C and average temperature over 24 hours is not to exceed 35°C

Refer to Inst. Body Size C - 2 for additional detailed instructions

This brochure is distributed with the understanding that the authors and editors are not responsible for the results of any actions taken on the basis of the information in this work, or any errors or omission. Further, Minto Industrial Products is not engaged in rendering professional services. Minto Industrial Products expressly disclaims all and any liability to any person in respect of anything and of the consequences of anything done or omitted to be done by any such person in reliance whether whole or partial of the whole or any part of the contents of this publication. All rights reserved. No part of this work covered by copyright may be reproduced or copied in any form or by any means without the written permission of Minto Industrial Products.