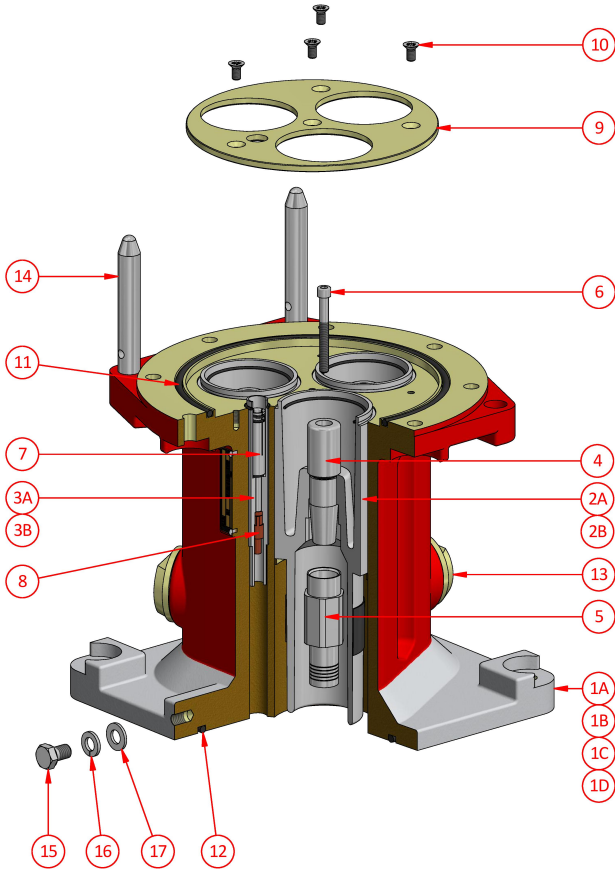




Bolted Adaptor Bronze
AB803B - AB804B
AB803BC - AB804BC

800 Amp Series D
Body Size D - 11000V



Weight
Dimensions
Compliance
Materials
IP Rating

34.0kg
L 280mm W 280mm H 300mm
Explosion protected to AS/NZS1300 & IEC60079 Series
Manganese Bronze / PTFE
IP66/68

Ordering Procedure

- 1 Select complete Adaptor from Table 1
- 2 Select Phase Thimble from Table 2 (3 Required)
- 3 Select Accessories from Body Size D Accessories

Table 1

| Part Number | Description | Colour |
|-------------|---|-----------|
| AB803B | 800A 11kV Bolted Adaptor | Red/White |
| AB804B | 800A 11kV Bolted Adaptor c/w Pilot Assembly | Red/White |
| AB803BC | 800A 11kV Bolted Adaptor with Lights | Red/White |
| AB804BC | 800A 11kV Bolted Adaptor with Lights c/w Pilot Assembly | Red/White |

Table 2

Phase Thimble - c/w screw AH009868 1/4" x 2 1/4" skt. head

| Part Number | CSA | ID mm | Utilux Die No. |
|-------------|-----|-------|----------------|
| F-201-432 | 25 | 8.0 | 38-92 Cu |
| F-201-302 | 35 | 9.5 | 38-115 Cu |
| F-201-303 | 50 | 10.5 | 38-115 Cu |
| F-201-303-1 | 70 | 12.8 | 38-142 Cu |
| F-201-304-1 | 95 | 14.0 | 38-165 Cu |
| F-201-305-1 | 120 | 16.0 | 38-165 Cu |
| F-201-306-1 | 150 | 18.0 | 38-183 Cu |
| F-201-307-1 | 185 | 21.8 | Solder Only |
| F-201-326-1 | 240 | 24.2 | Solder Only |
| F-3641 | 300 | 26.3 | 40-281 Cu |
| F-3641-1 | 240 | 24.2 | 40-281 Cu |
| F-3641-2 | 185 | 21.2 | 38-231 Cu |

NB: CSA is indicative only. Use ID for thimble selection

Spare Parts

| # | Part Number | Description |
|----|--------------|--|
| 1A | F-4636B-803 | 800A Adaptor Body c/w items 1A, 9, 10, 11, 12, 14, 15, 16 & 17 |
| 1B | F-4636B-804 | 800A Adaptor Body c/w items 1B, 9, 10, 11, 12, 14, 15, 16 & 17 |
| 1C | F-4636B-803C | 800A Adaptor Body c/w items 1C, 9, 10, 11, 12, 13, 14, 15, 16 & 17 |
| 1D | F-4636B-804C | 800A Adaptor Body c/w items 1D, 9, 10, 11, 12, 13, 14, 15, 16 & 17 |
| 2A | F-4668 | Phase Interior c/w O-ring AI019020 |
| 2B | F-4668H | Phase Interior c/w O-ring AI019020 & Heat Shrink |
| 3A | F-4639 | Pilot Insulator c/w O-ring AI019018 |
| 3B | F-4640 | Dummy Pilot Insulator c/w O-ring AI019018 |
| 4 | F-4647 | Phase Pin & O-ring AI019022 |
| 5 | See Table 2 | Phase Thimble |
| 6 | AH009868 | Screw 1/4" x 2 1/4" skt. head |
| 7 | F-4641 | Pilot Socket c/w c/w O-ring AI019030 & Pilot Thimble 4611 |
| 8 | 4611 | Pilot Thimble |
| 9 | 4644B | Interior Retaining Plate |
| 10 | AH151037 | Screw M6 x 12 csk. head |
| 11 | AI018994 | O-ring ID 184.0 x sect. 5.0 |
| 12 | AI018997 | O-ring ID 196.22 x sect. 5.33 |
| 13 | F-4671 | Indicator Light Assy |
| 14 | 3378 | Guide Pin |
| 15 | AH113111 | Screw M10 x 16 hex. head |
| 16 | AH151011 | Spring Washer M10 |
| 17 | AH150011 | Washer M10 |

CMi Head Office NSW | (02) 9807 6155 | F3, 3-29 Birnie Ave, Lidcombe, NSW, 2141 | nswsales@cmielectrical.com.au
CMi QLD-Brisbane
 (07) 3863 0749
 485A Zillmere Road,
 Zillmere QLD 4034
 southqldsales@cmielectrical.com.au

CMi QLD - Rockhampton
 (07) 4921 0978
 Shop 3 at 76 Hollingsworth Street,
 North Rockhampton Qld 4701
 northqldsales@cmielectrical.com.au

CMi VIC
 (03) 9532 1233
 3 Dissik Street,
 Cheltenham VIC 3192
 vicsales@cmielectrical.com.au

CMi WA
 (08) 9358 1788
 36 Division Street,
 Welshpool WA 6106
 wasales@cmielectrical.com.au