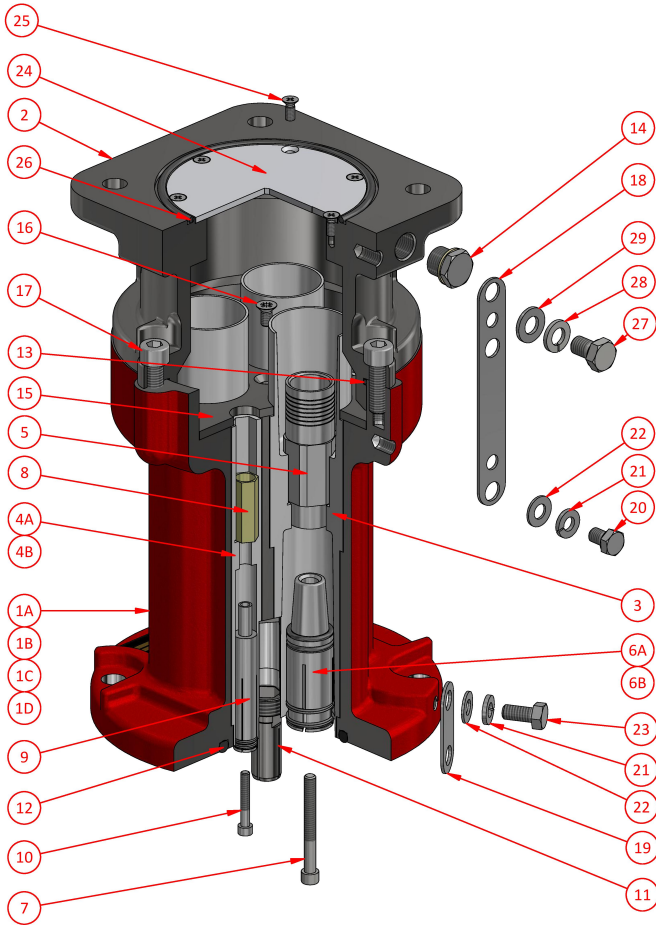




Bolted Adaptor  
AB374S - AB376S  
AB474S - AB476S

300/425 Amp Series C  
Body Size C - 6600V



**Weight** 22kg  
**Dimensions** L 220mm W 220mm H 330mm  
**Compliance** Explosion protected to AS/NZS1300 & IEC60079 Series  
**Materials** Stainless Steel / PTFE  
**IP Rating** IP66

Ordering Procedure

- 1 Select complete Adaptor from Table 1
- 2 Select Phase Thimble from Table 2 (3 Required)
- 3 Select Accessories from Body Size C Accessories

Table 1

| Part Number | Description                     | Colour     |
|-------------|---------------------------------|------------|
| AB374S      | 300A 6600V Bolted Adaptor 4 Pin | Red        |
| AB376S      | 300A 6600V Bolted Adaptor 6 Pin | Red        |
| AB474S      | 425A 6600V Bolted Adaptor 4 Pin | Red/Silver |
| AB476S      | 425A 6600V Bolted Adaptor 6 Pin | Red/Silver |

NB. Adaptor supplied with Pilot Thimble

Table 2

Phase Thimble - screw AH009868 3/16" x 1 1/4" skt. head

| Part Number | CSA | ID mm | Utilux Die No. |
|-------------|-----|-------|----------------|
| F-201-432   | 25  | 8.0   | 38-92 Cu       |
| F-201-302   | 35  | 9.5   | 38-115 Cu      |
| F-201-303   | 50  | 10.5  | 38-115 Cu      |
| F-201-303-1 | 70  | 12.8  | 38-142 Cu      |
| F-201-304-1 | 95  | 14.0  | 38-165 Cu      |
| F-201-305-1 | 120 | 16.0  | 38-165 Cu      |
| F-201-306-1 | 150 | 18.0  | 38-183 Cu      |
| F-201-307-1 | 185 | 21.8  | SOLDER ONLY    |
| F-201-326-1 | 240 | 24.2  | SOLDER ONLY    |
| F-3641      | 300 | 26.3  | 40-281 Cu      |
| F-3641-1    | 240 | 24.2  | 40-281 Cu      |
| F-3641-2    | 185 | 21.2  | 38-231 Cu      |

NB: CSA is indicative only. Use ID for thimble selection

Spare Parts

| #  | Part Number | Description   |
|----|-------------|---|
| 1A | F-4707S-374 | 300A 6600V Coupler Body c/w items 1A, 11, 12, 15, 16, 18, 19, 20, 21, 22 & 23 |
| 1B | F-4707S-376 | 300A 6600V Coupler Body c/w items 1B, 11, 12, 15, 16, 18, 19, 20, 21, 22 & 23 |
| 1C | F-4707S-474 | 425A 6600V Coupler Body c/w items 1C, 11, 12, 15, 16, 18, 19, 20, 21, 22 & 23 |
| 1D | F-4707S-476 | 425A 6600V Coupler Body c/w items 1D, 11, 12, 15, 16, 18, 19, 20, 21, 22 & 23 |
| 2  | F-4706S     | 6600V Adaptor Box Assembly  |
| 3  | MO4700      | Phase Pin Insulator   |
| 4A | MO4701      | Pilot Socket Insulator  |
| 4B | 4718        | Auxiliary Socket Bung   |
| 5  | See Table 2 | Phase Thimble   |
| 6A | F-201-299   | 300A Phase Socket c/w O-ring AI019013   |
| 6B | F-201-300-1 | 425A Phase Socket c/w O-ring AI019013   |
| 7  | AH009868    | Screw 1/4" x 2 1/4" skt. head   |
| 8  | F-3727      | Pilot Thimble c/w screw AH009834 3/16" x 1 1/4" skt. head                     |
| 9  | F-3042-1    | Pilot Socket  |
| 10 | AH009834    | Screw 3/16" x 1 1/4" skt. head  |
| 11 | 4708        | Earth Connector   |
| 12 | AI018993    | O-ring ID 113.67 x sect. 6.99   |
| 13 | AI019057    | O-ring ID 145.72 x sect. 2.62   |
| 14 | F-PM16SS    | M16 Blanking Plug c/w Sealing Washer  |
| 15 | 4699        | Retaining Plate   |
| 16 | AH151037    | Screw M6 x 12 csk. head   |
| 17 | AH115114    | Screw M10 x 30 skt. head  |
| 18 | 201-264-1   | Earth Strap   |
| 19 |             | Earth Strap   |
| 20 | AH113091    | Screw M8 x 10 hex. head   |
| 21 | AH151071    | Spring Washer M8  |
| 22 | AH009277    | Washer 5/16"  |
| 23 | AH113097    | Screw M8 x 16 hex. head   |
| 24 | 3066-1      | Cable Spreader Plate  |
| 25 | AH151034    | Screw M5 x 12 csk. head   |
| 26 | AI019045    | O-ring ID 110.72 x sect. 3.53   |
| 27 | AH113111    | Screw M10 x 16 hex. head  |
| 28 | AH151011    | Spring Washer M10   |
| 29 | AH150011    | Washer M10  |